



Benham & Reeves

Rosemary Place, Royal Mint Street, E1

£1,050 per week, £4,550 per month + fees

 3 Bedrooms  2 Bathrooms  Furnished

Luxury penthouse apartment designed with City living in mind, finished with Timber floors and zonal control situated within a prestigious development in Aldgate. Located within a short walk into The City and minutes from the DLR and London Underground. EPC-B

Please [click here](#) for full detail

Property features

Furnished 3 Bedroom Penthouse Apartment | Open Plan Reception / Living Area With Balcony | Bespoke Fitted Kitchen With Integrated Siemens Appliances | 3 Well Equipped Bedrooms | Luxury Bathroom & En-Suite With Bespoke Vanity Counter | EPC-B | Timber Floors, LED Mood Lighting, Underfloor Heating | Concierge, Residents Lounge, Pool, Jacuzzi, Gym & Games Room | Cinema / Screening Room, & Communal Roof Terraces | Tower Hill (Underground), Tower Gateway (DLR) & Fenchurch

For more information about this property,
please call our Wapping branch on

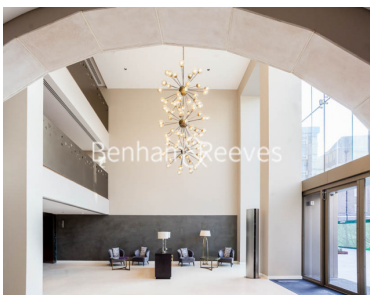
020 7680 8900

Redress & Client Money Protection :

Benham and Reeves are members of The Property Ombudsman redress scheme and have Client Money protection with ARLA Propertymark. You can find more information on our website at <https://www.benhams.com/membership/>



Benham & Reeves



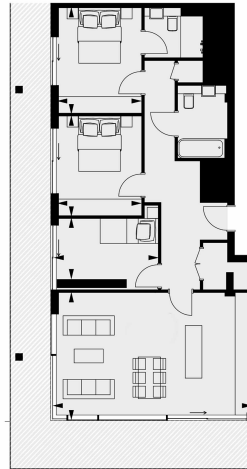
Rosemary Place, Royal Mint Street, E1

£1,050 per week, £4,550 per month + fees

www.benhams.com

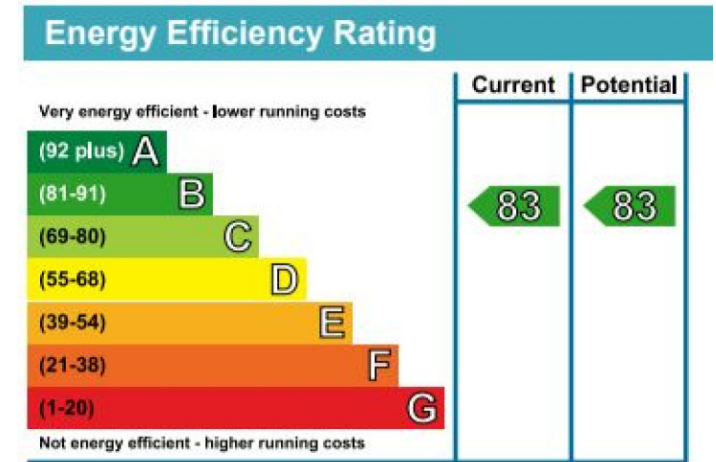
13th Floor

Approx gross internal area: 991sq/ft - 92sq/m



Living/Dining	7.2m x 4.7m / 26'6" x 15'4"
Master Bedroom	3.0m x 3.8m / 9'8" x 12'5"
Bedroom 2	3.0m x 3.6m / 9'8" x 11'8"
Bedroom 3	3.8m x 2.1m / 14'5" x 6'9"

Whilst every attempt has been made to ensure the accuracy of the floor plan contained here, measurements of doors, windows, rooms and any other items are approximate and no responsibility is taken for any error, omission, or mis-statement. This plan is for illustrative purposes only and should be used as such by any prospective purchaser. The services, systems and appliances shown have not been tested and no guarantee as to their operability or efficiency can be given.
Made with Metropix ©2016



London branches open six days a week Mon - Sat

Canary Wharf | City | Colindale | Dartmouth Park | Ealing | Fulham
Hammersmith | Hampstead | Highgate | Hyde Park | Kensington | Kew
Knightsbridge | Nine Elms | Shoreditch | Southall | Surrey Quays
Wapping | Wembley | White City | Woolwich

International offices

China | Hong Kong SAR | India | Indonesia | Qatar | Malaysia | Middle East |
Singapore | South Africa | Thailand | Turkey

