



Benham & Reeves

## Millharbour, Canary Wharf, E14

£600 per week, £2,600 per month + fees

 2 Bedrooms    1 Bathroom    Furnished

A modern 7th floor apartment, with concierge and residents' gym, situated in a popular development in the heart of South Quay, a short walk from South Quay DLR and Canary Wharf.

Please [click here](#) for full detail

## Property features

**2 Bedrooms | 7 th Floor | Concierge Service | Private Balcony | Residents' Gymnasium | EPC-B | Great Local Amenties | 4 Minute Walk To South Quay Dlr Station | 5 Minute Walk To Crossharbour Dlr Station**

For more information about this property, please call our Canary Wharf branch on

**020 8036 3200**

Redress & Client Money Protection :

Benham and Reeves are members of The Property Ombudsman redress scheme and have Client Money protection with ARLA Propertymark. You can find more information on our website at <https://www.benhams.com/membership/>



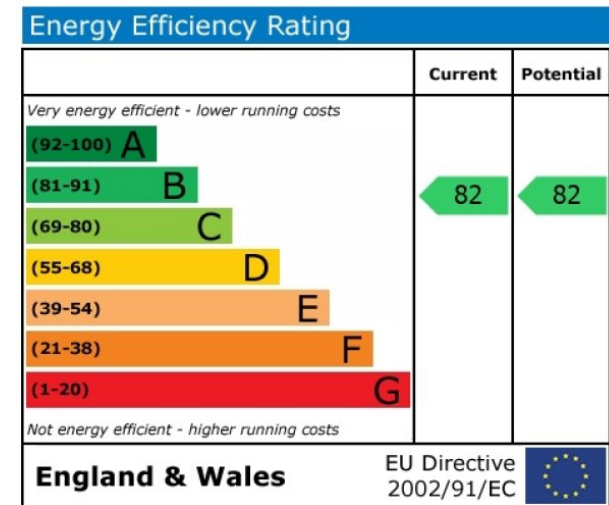
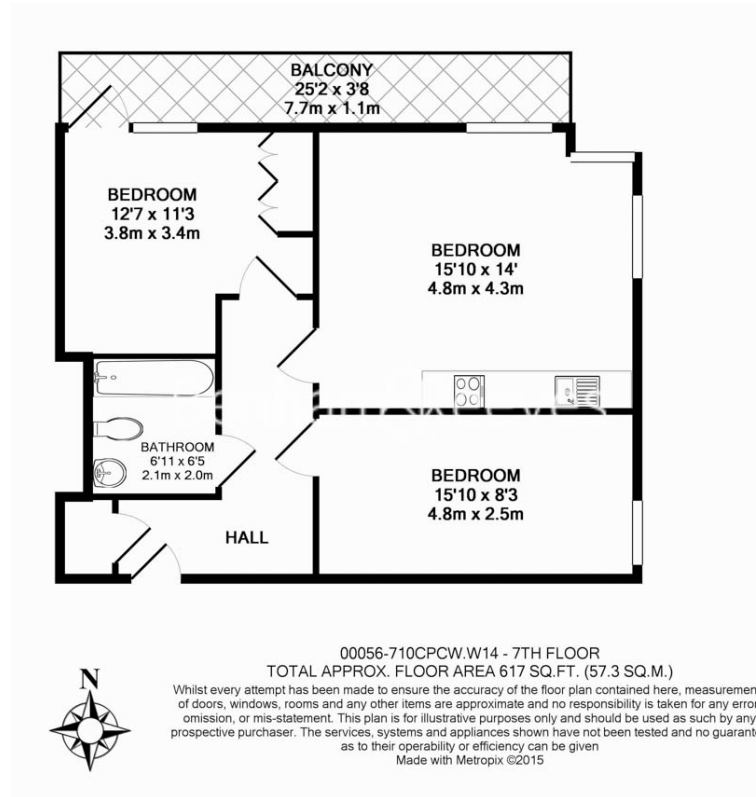
Benham&Reeves



# Millharbour, Canary Wharf, E14

£600 per week, £2,600 per month + fees

www.benhams.com



## London branches open six days a week Mon - Sat

Canary Wharf | City | Colindale | Dartmouth Park | Ealing | Fulham  
Hammersmith | Hampstead | Highgate | Hyde Park | Kensington | Kew  
Knightsbridge | Nine Elms | Shoreditch | Southall | Surrey Quays  
Wapping | Wembley | White City | Woolwich

## International offices

China | Hong Kong SAR | India | Indonesia | Qatar | Malaysia | Middle East |  
Singapore | South Africa | Thailand | Turkey



Benham & Reeves