



Benham & Reeves

Marsh Wall, Canary Wharf, E22

£635 per week, £2,750 per month + fees

 1 Bedroom  1 Bathroom 
Furnished/UnFurnished

Stunning apartment with COMFORT COOLING, ZONAL UNDERFLOOR HEATING set in a prestigious development in Canary Wharf, with the ultimate of luxury facilities for residents.

Please [click here](#) for full detail

Property features

One Bedroom | One Bathroom | Open Plan Living | 24-hour Concierge | Fitted Kitchen | EPC-B | Residents Onsite Amenities - Coming Soon | Furnished to High Standard | Excellent transport links | Nearby Canary Wharf Underground Station

For more information about this property, please call our Canary Wharf branch on

020 8036 3200

Redress & Client Money Protection :

Benham and Reeves are members of The Property Ombudsman redress scheme and have Client Money protection with ARLA Propertymark. You can find more information on our website at <https://www.benhams.com/membership/>



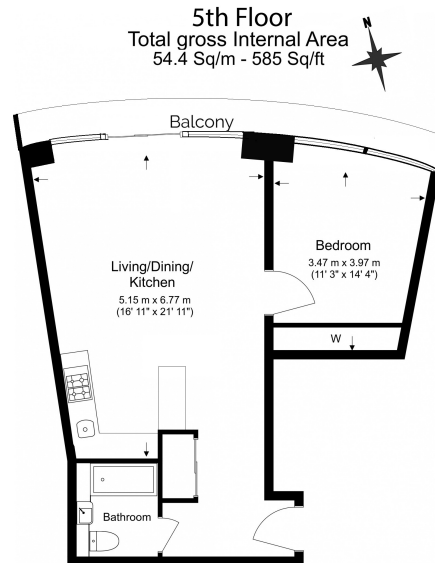
Benham & Reeves



Marsh Wall, Canary Wharf, E22

£635 per week, £2,750 per month + fees

www.benhams.com



Benham & Reeves

Floor Plan measurements are approximate and are for illustrative purposes only. While we do not doubt the floor plans accuracy, we make no guarantee, warranty or representation as to the accuracy and completeness of the floor plan.

Score	Energy rating	Current	Potential
92+	A		
81-91	B	83 B	83 B
69-80	C		
55-68	D		
39-54	E		
21-38	F		
1-20	G		

London branches open six days a week Mon - Sat

Canary Wharf | City | Colindale | Dartmouth Park | Ealing | Fulham
Hammersmith | Hampstead | Highgate | Hyde Park | Kensington | Kew
Knightsbridge | Nine Elms | Shoreditch | Southall | Surrey Quays
Wapping | Wembley | White City | Woolwich

International offices

China | Hong Kong SAR | India | Indonesia | Qatar | Malaysia | Middle East |
Singapore | South Africa | Thailand | Turkey



Benham & Reeves