



Benham & Reeves

Gillender Street, Canary Wharf, E3

£450 per week, £1,950 per month + fees

 1 Bedroom  1 Bathroom  Unfurnished

A beautifully presented one-bedroom apartment forming part of the Three Waters - River Apartments on Gillender Street, E3.

The property features a spacious open-plan kitchen and living area, a double bedroom, a sleek fully fitted modern bathroom, additional storage space, and a private balcony.

Please [click here](#) for full detail

Property features

One Double Bedroom | Luxury Bathroom | Open plan reception | Unfurnished | Open-plan kitchen and living | EPC-B | Excellent transportation link | 24-hour Concierge | Communal Garden | Nearby Underground and Docklands Light Railway (DLR)

For more information about this property, please call our Canary Wharf branch on

020 8036 3200

Redress & Client Money Protection :

Benham and Reeves are members of The Property Ombudsman redress scheme and have Client Money protection with ARLA Propertymark. You can find more information on our website at <https://www.benhams.com/membership/>



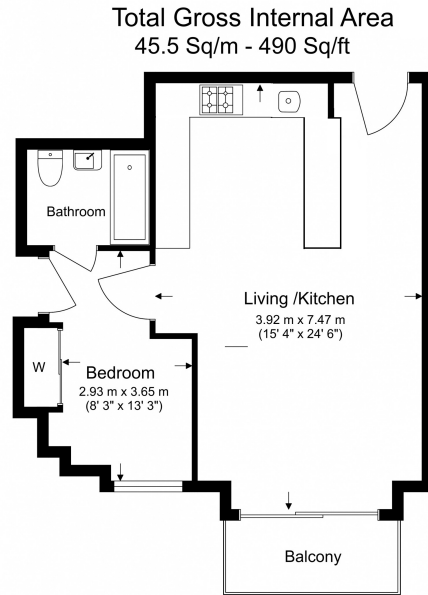
Benham & Reeves



Gillender Street, Canary Wharf, E3

£450 per week, £1,950 per month + fees

www.benhams.com



Benham & Reeves

Floor Plan measurements are approximate and are for illustrative purposes only. While we do not doubt the floor plans accuracy, we make no guarantee, warranty or representation as to the accuracy and completeness of the floor plan.

Score	Energy rating	Current	Potential
92+	A		
81-91	B	85 B	85 B
69-80	C		
55-68	D		
39-54	E		
21-38	F		
1-20	G		

London branches open six days a week Mon - Sat

Canary Wharf | City | Colindale | Dartmouth Park | Ealing | Fulham
Hammersmith | Hampstead | Highgate | Hyde Park | Kensington | Kew
Knightsbridge | Nine Elms | Shoreditch | Southall | Surrey Quays
Wapping | Wembley | White City | Woolwich

International offices

China | Hong Kong SAR | India | Indonesia | Qatar | Malaysia | Middle East |
Singapore | South Africa | Thailand | Turkey



Benham & Reeves