



Benham & Reeves

Mary Neuner Road, Alexandra Gate, N8

£577 per week, £2,500 per month + fees

 2 Bedrooms  2 Bathrooms  Furnished

Stunning bright apartment, with secure bike storage and private roof terraces, situated in an exciting development a brief walk from Hornsey Station which offers direct Thameslink / Great Northern Services to King's Cross and Moorgate.

Please [click here](#) for full detail

Property features

Two double bedrooms | Two bathrooms | Open plan kitchen | Reception room | Balcony | EPC-B | 24/7 concierge | Swimming pool | Gym, Working spaces | Nearby Underground station and Tube line in brackets

For more information about this property, please call our Highgate branch on

020 8341 2335

Redress & Client Money Protection :

Benham and Reeves are members of The Property Ombudsman redress scheme and have Client Money protection with ARLA Propertymark. You can find more information on our website at <https://www.benhams.com/membership/>



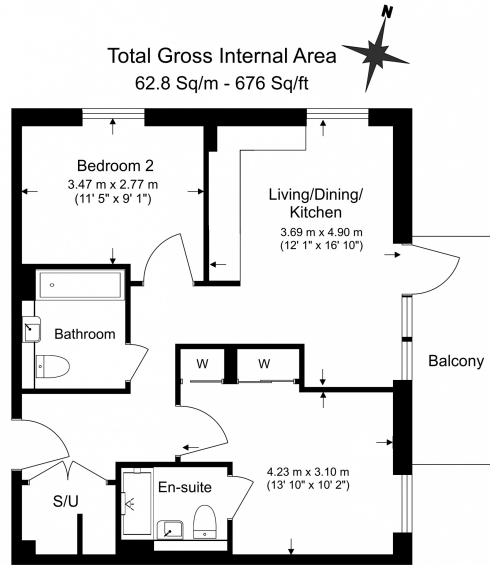
Benham & Reeves



Mary Neuner Road, Alexandra Gate, N8

£577 per week, £2,500 per month + fees

www.benhams.com



Benham & Reeves

Floor Plan measurements are approximate and are for illustrative purposes only. While we do not doubt the floor plans accuracy, we make no guarantee, warranty or representation as to the accuracy and completeness of the floor plan.

Score	Energy rating	Current	Potential
92+	A		
81-91	B	84 B	84 B
69-80	C		
55-68	D		
39-54	E		
21-38	F		
1-20	G		

London branches open six days a week Mon - Sat

Canary Wharf | City | Colindale | Dartmouth Park | Ealing | Fulham
Hammersmith | Hampstead | Highgate | Hyde Park | Kensington | Kew
Knightsbridge | Nine Elms | Shoreditch | Southall | Surrey Quays
Wapping | Wembley | White City | Woolwich

International offices

China | Hong Kong SAR | India | Indonesia | Qatar | Malaysia | Middle East |
Singapore | South Africa | Thailand | Turkey



Benham & Reeves