



Benham & Reeves

Beaufort Square, Colindale, NW9

£427 per week, £1,850 per month + fees

 1 Bedroom  1 Bathroom  Furnished

Luxurious apartment situated in a desirable development in North West London, with excellent security and amenities on site. Ideally located a short walk (0.4 miles) from Colindale Underground Station (Northern Line).

Please [click here](#) for full detail

Property features

Selection of Amenities | Brand New Apartment | Private Balcony | Tastefully Furnished | Situated within Beaufort Park, Colindale NW9 | EPC-B | 24 Hour Estate Management | Water rates included | Fee Gym, Swimming Pool, Spa and Jacuzzi | 0.4 miles to Colindale Underground Station

For more information about this property, please call our Colindale branch on

020 8732 7980

Redress & Client Money Protection :

Benham and Reeves are members of The Property Ombudsman redress scheme and have Client Money protection with ARLA Propertymark. You can find more information on our website at <https://www.benhams.com/membership/>



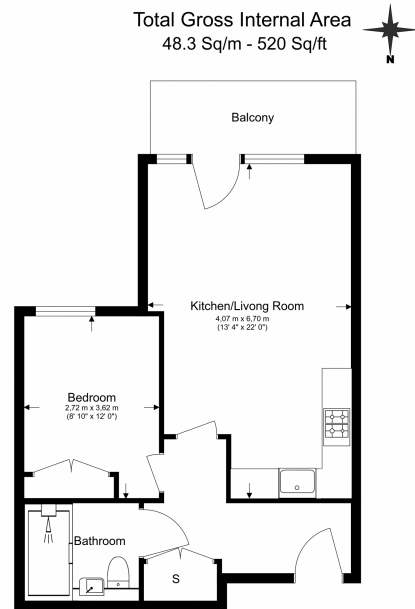
Benham & Reeves



Beaufort Square, Colindale, NW9

£427 per week, £1,850 per month + fees

www.benhams.com



Floor Plan measurements are approximate and are for illustrative purposes only. While we do not doubt the floor plans accuracy, we make no guarantee, warranty or representation as to the accuracy and completeness of the floor plan.

Score	Energy rating	Current	Potential
92+	A		
81-91	B	81 B	81 B
69-80	C		
55-68	D		
39-54	E		
21-38	F		
1-20	G		

London branches open six days a week Mon - Sat

Canary Wharf | City | Colindale | Dartmouth Park | Ealing | Fulham
Hammersmith | Hampstead | Highgate | Hyde Park | Kensington | Kew
Knightsbridge | Nine Elms | Shoreditch | Southall | Surrey Quays
Wapping | Wembley | White City | Woolwich

International offices

China | Hong Kong SAR | India | Indonesia | Qatar | Malaysia | Middle East |
Singapore | South Africa | Thailand | Turkey

