



Benham & Reeves

Draycote House, Caversham Road, NW9

£502 per week, £2,175 per month + fees

 1 Bedroom  1 Bathroom  Furnished

A stunning apartment situated in an exclusive and exciting build-to-rent part, within Berkeley Groups flagship Beaufort Park, NW9 development. Conveniently located less than 10 minutes' walk from Colindale Underground Station (Northern Line). EPC-B

Please [click here](#) for full detail

Property features

Selection of Amenities On-site | Private Balcony | Concierge | Tastefully Furnished | Situated in Beaufort Park, Colindale NW9 | EPC- B | Available to rent immediately | Secure Underground Unallocated Parking | Free Gym and Lounge | 0.4 miles to Colindale Underground Station

For more information about this property, please call our Colindale branch on

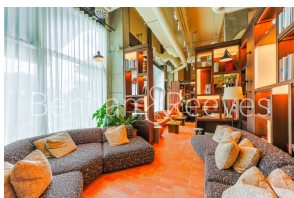
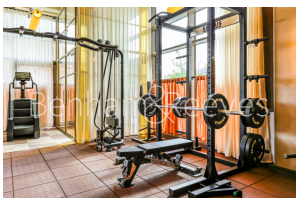
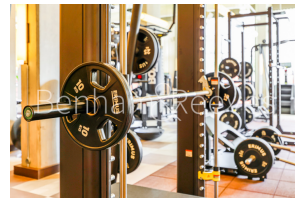
020 8732 7980

Redress & Client Money Protection :

Benham and Reeves are members of The Property Ombudsman redress scheme and have Client Money protection with ARLA Propertymark. You can find more information on our website at <https://www.benhams.com/membership/>



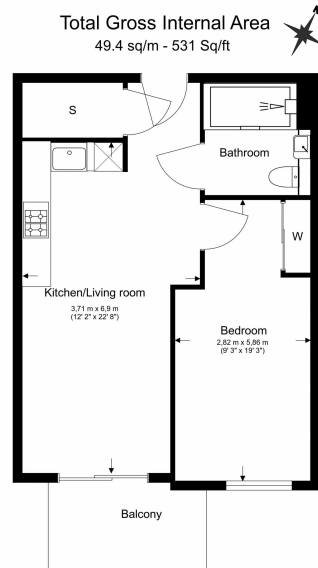
Benham & Reeves



Draycote House, Caversham Road, NW9

£502 per week, £2,175 per month + fees

www.benhams.com



Benham & Reeves

Floor Plan measurements are approximate and are for illustrative purposes only. While we do not doubt the floor plans accuracy, we make no guarantee, warranty or representation as to the accuracy and completeness of the floor plan.

Score	Energy rating	Current	Potential
92+	A		
81-91	B	84 B	84 B
69-80	C		
55-68	D		
39-54	E		
21-38	F		
1-20	G		

London branches open six days a week Mon - Sat

Canary Wharf | City | Colindale | Dartmouth Park | Ealing | Fulham
Hammersmith | Hampstead | Highgate | Hyde Park | Kensington | Kew
Knightsbridge | Nine Elms | Shoreditch | Southall | Surrey Quays
Wapping | Wembley | White City | Woolwich

International offices

China | Hong Kong SAR | India | Indonesia | Qatar | Malaysia | Middle East |
Singapore | South Africa | Thailand | Turkey



Benham & Reeves