



Benham & Reeves

**Beaufort Park, Colindale, NW9**

£531 per week, £2,300 per month + fees

 2 Bedrooms    2 Bathrooms    Furnished

Stylish, bright, and airy apartment offering underground parking (direct access from the building) and excellent resident amenities situated in a desirable development in North West London. Ideally located a short walk (0.4 miles) from Colindale Underground Station (Northern Line). EPC -C

Please [click here](#) for full detail

## Property features

**Selection of Amenities On-site | Overlooking the beautiful landscaped Courtyard | Private Balcony | Tastefully Furnished | Situated within Beaufort Park, Colindale NW9 | EPC-D | 24 Hour Estate Management | Secure Underground Unallocated Parking | Free Gym, Swimming Pool, Spa and Jacuzzi | 0.4 miles to Colindale Underground Station**

For more information about this property,  
please call our Colindale branch on

**020 8732 7980**

Redress & Client Money Protection :

Benham and Reeves are members of The Property Ombudsman redress scheme and have Client Money protection with ARLA Propertymark. You can find more information on our website at <https://www.benhams.com/membership/>



**Benham & Reeves**

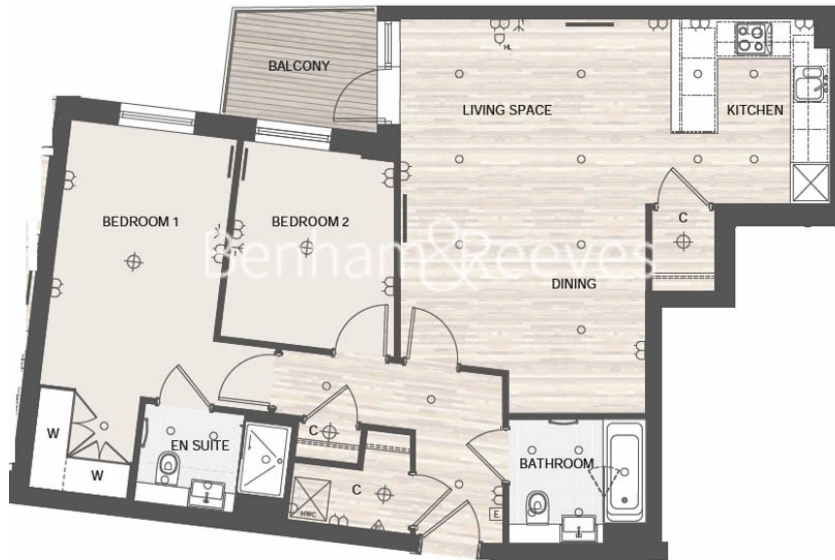


# Beaufort Park, Colindale, NW9

£531 per week, £2,300 per month + fees

www.benhams.com

Living Space	7.06m x 6.48m	23' 2" x 21' 3"
Bedroom 1	5.50m x 2.75m	18' 0" x 9' 0"
Bedroom 2	3.24m x 2.88m*	10' 7" x 9' 6"*



Score	Energy rating	Current	Potential
92+	A		
81-91	B		
69-80	C		
55-68	D	65   D	65   D
39-54	E		
21-38	F		
1-20	G		

## London branches open six days a week Mon - Sat

Canary Wharf | City | Colindale | Dartmouth Park | Ealing | Fulham  
 Hammersmith | Hampstead | Highgate | Hyde Park | Kensington | Kew  
 Knightsbridge | Nine Elms | Shoreditch | Southall | Surrey Quays  
 Wapping | Wembley | White City | Woolwich

## International offices

China | Hong Kong SAR | India | Indonesia | Qatar | Malaysia | Middle East |  
 Singapore | South Africa | Thailand | Turkey

