



Benham & Reeves

Oval Village, Vauxhall, SE11

£854 per week, £3,701 per month + fees

🚪 2 Bedrooms 🚿 2 Bathrooms 🛋️ Furnished

A modern 12th floor apartment with UNDERFLOOR HEATING THROUGHOUT situated in a highly sought after development located between Vauxhall Station (Victoria and NR Lines) and Oval (Northern Line) EPC-B

Please [click here](#) for full detail

Property features

12 th floor | Two double bedrooms | Two bathrooms | Balcony | Air cooling | EPC-B | 24 hour concierge | Gym | Tesco supermarket on site | Nearby Vauxhall and Oval stations

For more information about this property, please call our Nine Elms branch on

020 3282 3700

Redress & Client Money Protection :

Benham and Reeves are members of The Property Ombudsman redress scheme and have Client Money protection with ARLA Propertymark. You can find more information on our website at <https://www.benhams.com/membership/>



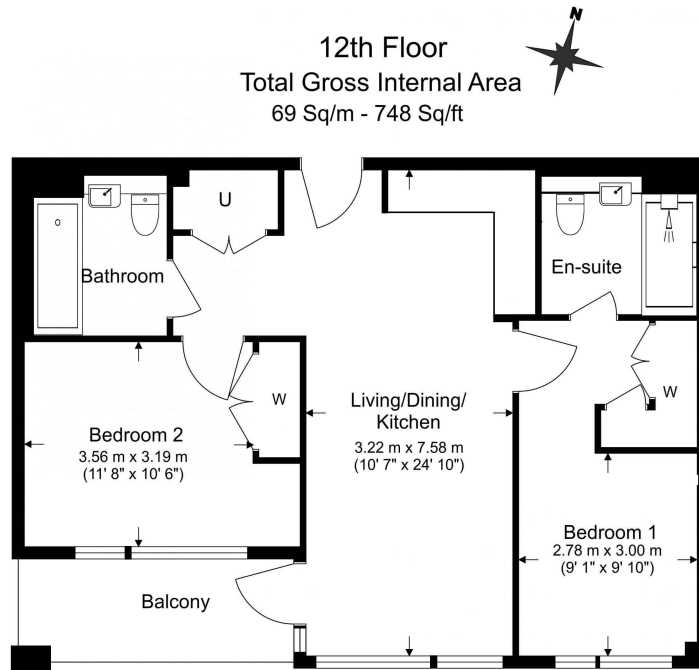
Benham & Reeves



Oval Village, Vauxhall, SE11

£854 per week, £3,701 per month + fees

www.benhams.com



Benham & Reeves

Floor Plan measurements are approximate and are for illustrative purposes only. While we do not doubt the floor plans accuracy, we make no guarantee, warranty or representation as to the accuracy and completeness of the floor plan.

Energy Efficiency Rating		
	Current	Potential
<i>Very energy efficient - lower running costs</i>		
(92-100) A		
(81-91) B	85	85
(69-80) C		
(55-68) D		
(39-54) E		
(21-38) F		
(1-20) G		
<i>Not energy efficient - higher running costs</i>		
England & Wales	EU Directive 2002/91/EC	

London branches open six days a week Mon - Sat

Canary Wharf | City | Colindale | Dartmouth Park | Ealing | Fulham
Hammersmith | Hampstead | Highgate | Hyde Park | Kensington | Kew
Knightsbridge | Nine Elms | Shoreditch | Southall | Surrey Quays
Wapping | Wembley | White City | Woolwich

International offices

China | Hong Kong SAR | India | Indonesia | Qatar | Malaysia | Middle East |
Singapore | South Africa | Thailand | Turkey



Benham & Reeves