



Benham & Reeves

Ashton Reach, Surrey Quays, SE16

£416 per week, £1,803 per month + fees

 1 Bedroom  1 Bathroom  Furnished

Bright and spacious fully furnished ground floor apartment situated within one of the most sought-after Riverside developments with easy access to The City and Canary Wharf via Surrey Quays Overground and Canada Water (Jubilee line) station and the Thames Clippers riverboats.

Please [click here](#) for full detail

Property features

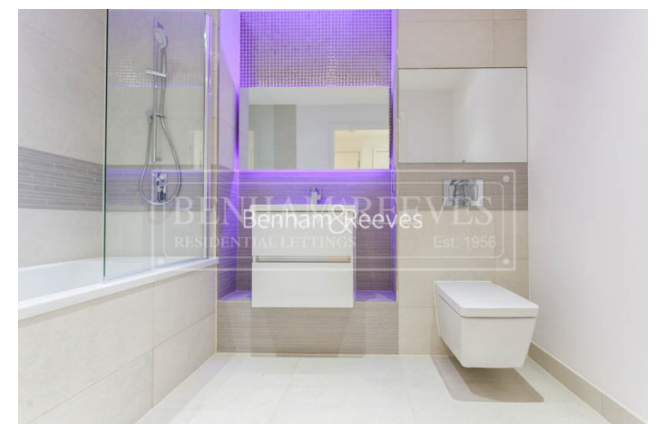
One Double Bedroom | Fully Furnished | 24hr Concierge | Large Bathroom | Bright and Spacious Reception | EPC-B | Onsite Amenities | Residents Gym | Surrey Quays & Canada Water Station Thames clipper Riverboat

For more information about this property,
please call our Wapping branch on

020 7680 8900

Redress & Client Money Protection :

Benham and Reeves are members of The Property Ombudsman redress scheme and have Client Money protection with ARLA Propertymark. You can find more information on our website at <https://www.benhams.com/membership/>



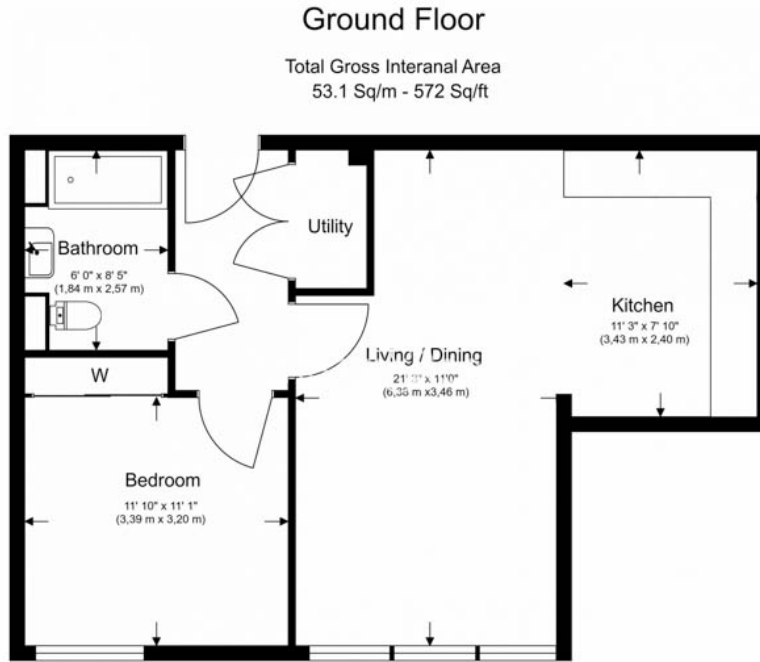
Benham & Reeves



Ashton Reach, Surrey Quays, SE16

£416 per week, £1,803 per month + fees

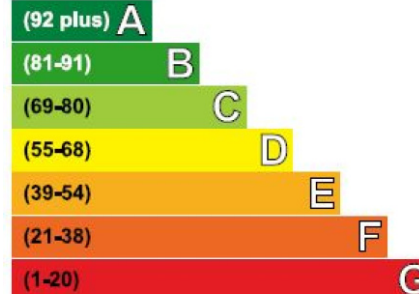
www.benhams.com



Floor Plan measurements are approximate and are for illustrative purposes only. While we do not doubt the floor plans accuracy, we make no guarantee, warranty or representation as to the accuracy and completeness of the floor plan.

Energy Efficiency Rating

Very energy efficient - lower running costs



	Current	Potential
Very energy efficient - lower running costs		
(92 plus) A		
(81-91) B	83	83
(69-80) C		
(55-68) D		
(39-54) E		
(21-38) F		
(1-20) G		
Not energy efficient - higher running costs		

London branches open six days a week Mon - Sat

Canary Wharf | City | Colindale | Dartmouth Park | Ealing | Fulham
Hammersmith | Hampstead | Highgate | Hyde Park | Kensington | Kew
Knightsbridge | Nine Elms | Shoreditch | Southall | Surrey Quays
Wapping | Wembley | White City | Woolwich

International offices

China | Hong Kong SAR | India | Indonesia | Qatar | Malaysia | Middle East |
Singapore | South Africa | Thailand | Turkey

