



Benham & Reeves

Voile Court, Wallington, SM6

£444 per week, £1,925 per month + fees

🛏️ 2 Bedrooms 🚿 2 Bathrooms 🛋️ Furnished

A 3rd floor, apartment, with children's play area and supermarket on site, located in sought-after development opposite Hackbridge Train Station with direct trains to Victoria. EPC-B

Please [click here](#) for full detail

Property features

Two Bedrooms | Two Bathrooms | Open planned kitchen | Dishwasher | Furnished | EPC-B | Private outside space | Washer/dryer | Supermarket on site | Hackbridge Station

For more information about this property, please call our Nine Elms branch on

020 3282 3700



Redress & Client Money Protection :
Benham and Reeves are members of The Property Ombudsman redress scheme and have Client Money protection with ARLA Propertymark.
You can find more information on our website at <https://www.benhams.com/membership/>

Benham & Reeves

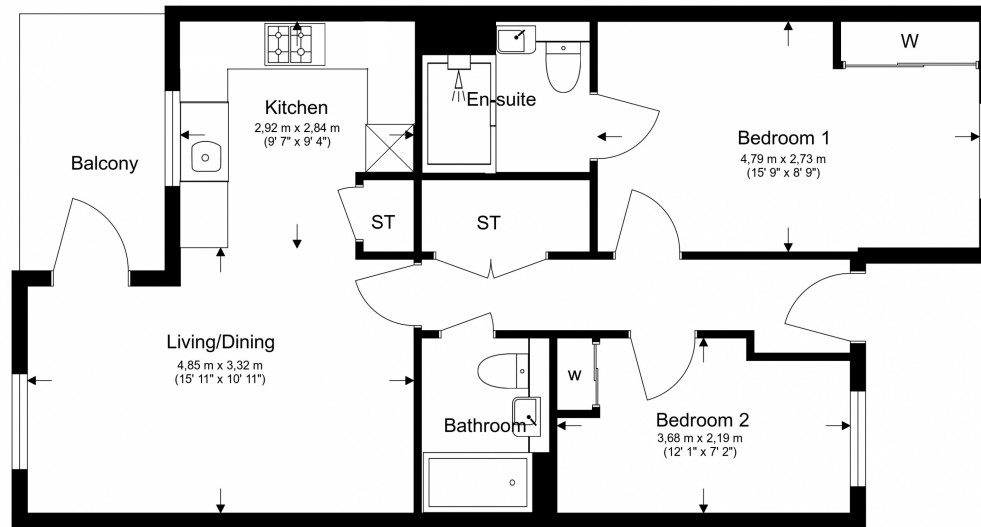


Voile Court, Wallington, SM6


£444 per week, £1,925 per month + fees

www.benhams.com

Third Floor
Total Gross Internal Area
61.9 Sq/m - 666 Sq/ft



Floor Plan measurements are approximate and are for illustrative purposes only. While we do not doubt the floor plans accuracy, we make no guarantee, warranty or representation as to the accuracy and completeness of the floor plan.

Energy Efficiency Rating		
	Current	Potential
<i>Very energy efficient - lower running costs</i>		
(92-100) A		
(81-91) B	83	83
(69-80) C		
(55-68) D		
(39-54) E		
(21-38) F		
(1-20) G		
<i>Not energy efficient - higher running costs</i>		
England & Wales	EU Directive 2002/91/EC 	

London branches open six days a week Mon - Sat

Canary Wharf | City | Colindale | Dartmouth Park | Ealing | Fulham
Hammersmith | Hampstead | Highgate | Hyde Park | Kensington | Kew
Knightsbridge | Nine Elms | Shoreditch | Southall | Surrey Quays
Wapping | Wembley | White City | Woolwich

International offices

China | Hong Kong SAR | India | Indonesia | Qatar | Malaysia | Middle East |
Singapore | South Africa | Thailand | Turkey



Benham & Reeves