



Benham & Reeves

Rutland Gate House, Knightsbridge, SW7

£2,295 per week, £9,945 per month + fees

 3 Bedrooms  3 Bathrooms  Furnished

We are delighted to present an exceptional 1,539 sq ft THREE-BEDROOM DUPLEX apartment in prestigious RUTLAND GARDENS in the heart of KNIGHTSBRIDGE.

Please [click here](#) for full detail

Property features

3 Bedroom Duplex | Large Reception | Fully-Fitted Kitchen | Dining Room | 3 Bathrooms | EPC- C | 1,539 Sq Ft | Integrated Lighting & Sound System | Furnished | Prestigious Knightsbridge Location

For more information about this property, please call our Knightsbridge branch on

020 7581 2112

Redress & Client Money Protection :

Benham and Reeves are members of The Property Ombudsman redress scheme and have Client Money protection with ARLA Propertymark. You can find more information on our website at <https://www.benhamandreeves.com/membership/>



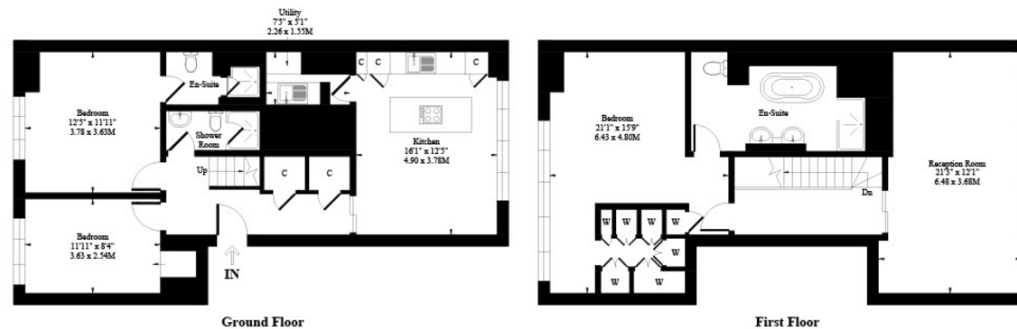
Benham & Reeves



Rutland Gate House, Knightsbridge, SW7

£2,295 per week, £9,945 per month + fees

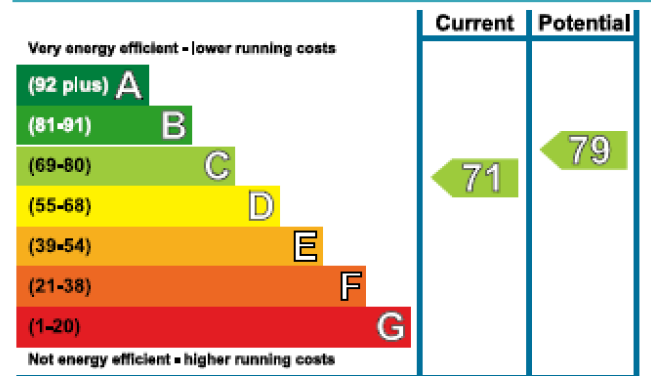
www.benhams.com



Approx. Gross Internal Area 1539 Sq. Ft / 142.98 Sq. M

Measured in accordance with RICS guidelines. Every attempt is made to ensure accuracy. However all measurements are approximate. The floor plan is illustrative purposes only and is not to scale.

Energy Efficiency Rating



London branches open six days a week Mon - Sat

Canary Wharf | City | Colindale | Dartmouth Park | Ealing | Fulham
 Hammersmith | Hampstead | Highgate | Hyde Park | Kensington | Kew
 Knightsbridge | Nine Elms | Shoreditch | Southall | Surrey Quays
 Wapping | Wembley | White City | Woolwich

International offices

China | Hong Kong SAR | India | Indonesia | Qatar | Malaysia | Middle East |
 Singapore | South Africa | Thailand | Turkey

