



Benham & Reeves

Gladwin Tower, Nine Elms, SW8

£681 per week, £2,950 per month + fees

 1 Bedroom  1 Bathroom  Furnished

A modern 17th floor apartment situated in a sought-after development with a host of resident facilities, and a Sainsbury's on site. Positioned next to Nine Elms Tube Station (Northern Line) and easy access to Vauxhall station (Victoria Line). EPC-B

Please [click here](#) for full detail

Property features

One double bedroom | Open planned living | Furnished | Air cooling | Dishwasher | EPC-B | 24 Hour Concierge | Gym | Residence Lounge | Nearby Nine Elms Tube Station

For more information about this property, please call our Nine Elms branch on

020 3282 3700

Redress & Client Money Protection :

Benham and Reeves are members of The Property Ombudsman redress scheme and have Client Money protection with ARLA Propertymark. You can find more information on our website at <https://www.benhams.com/membership/>



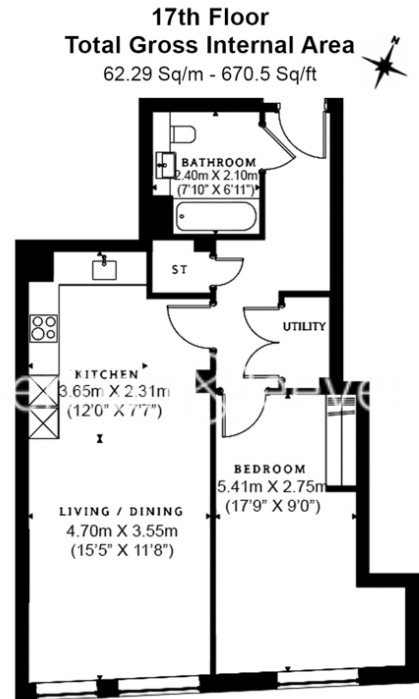
Benham & Reeves



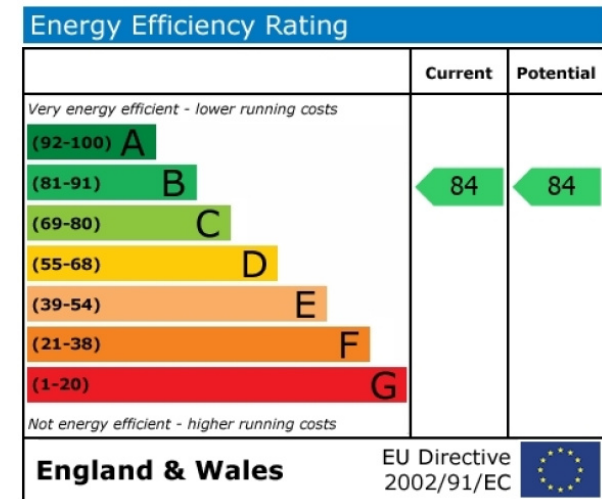
Gladwin Tower, Nine Elms, SW8

£681 per week, £2,950 per month + fees

www.benhams.com



Floor Plan measurements are approximate and are for illustrative purposes only. While we do not doubt the floor plans accuracy, we make no guarantee, warranty or representation as to the accuracy and completeness of the floor plan.



London branches open six days a week Mon - Sat

Canary Wharf | City | Colindale | Dartmouth Park | Ealing | Fulham
 Hammersmith | Hampstead | Highgate | Hyde Park | Kensington | Kew
 Knightsbridge | Nine Elms | Shoreditch | Southall | Surrey Quays
 Wapping | Wembley | White City | Woolwich

International offices

China | Hong Kong SAR | India | Indonesia | Qatar | Malaysia | Middle East |
 Singapore | South Africa | Thailand | Turkey



Benham & Reeves