



Benham & Reeves

## Sky Gardens, Wandsworth Road, SW8

£625 per week, £2,708 per month + fees

 1 Bedroom    1 Bathroom    Furnished

A 25th floor apartment with views towards Central London and a Winter Garden in a sought after development in Nine Elms

Please [click here](#) for full detail

## Property features

25th floor | One double bedrooms | Open planned living | Winter Garden | Dishwasher | EPC-B | 24 hour concierge | Gym | Sky Gardens | Nine Elms and Vauxhall Stations

For more information about this property,  
please call our Nine Elms branch on

**020 3282 3700**

Redress & Client Money Protection :

Benham and Reeves are members of The Property Ombudsman redress scheme and have Client Money protection with ARLA Propertymark. You can find more information on our website at <https://www.benhams.com/membership/>



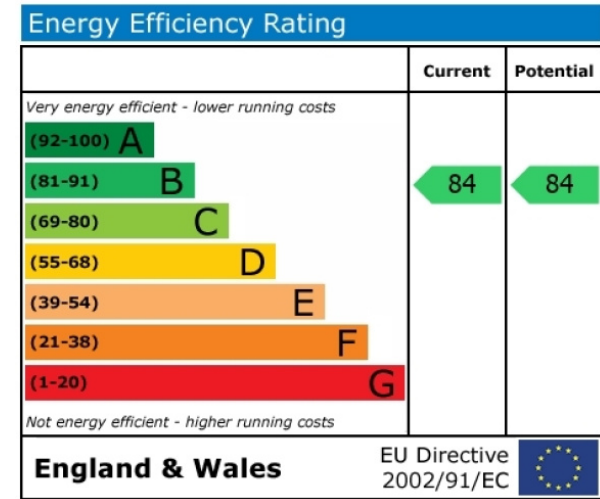
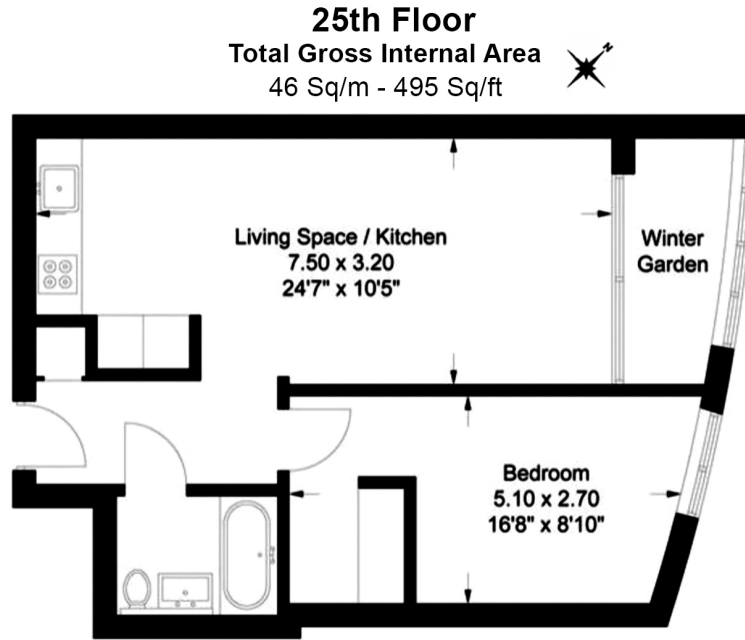
**Benham & Reeves**



# Sky Gardens, Wandsworth Road, SW8

£625 per week, £2,708 per month + fees

www.benhams.com



## London branches open six days a week Mon - Sat

Canary Wharf | City | Colindale | Dartmouth Park | Ealing | Fulham  
Hammersmith | Hampstead | Highgate | Hyde Park | Kensington | Kew  
Knightsbridge | Nine Elms | Shoreditch | Southall | Surrey Quays  
Wapping | Wembley | White City | Woolwich

## International offices

China | Hong Kong SAR | India | Indonesia | Qatar | Malaysia | Middle East |  
Singapore | South Africa | Thailand | Turkey



Benham & Reeves