



Benham & Reeves

**Damac Tower, 67 Bondway, SW8**

£1,200 per week, £5,200 per month + fees

 2 Bedrooms    2 Bathrooms    Furnished

A smart two bedroom two bathroom apartment located on the 21st floor at the sought after Damac Tower.

Please [click here](#) for full detail

## Property features

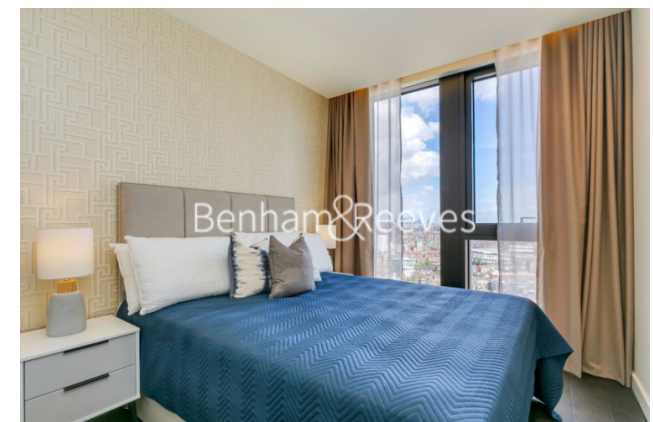
**Two double bedrooms | Two bathrooms | 21st Floor | Air cooling | Dishwasher | EPC-B | 24 hour concierge | Gym | Swimming Pool | Nearby Vauxhall Station**

For more information about this property, please call our Nine Elms branch on

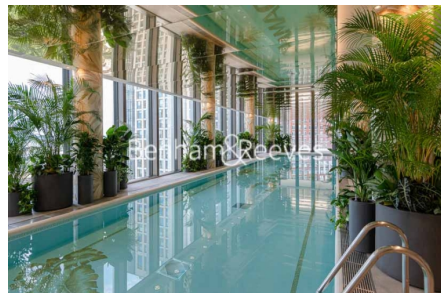
**020 3282 3700**

Redress & Client Money Protection :

Benham and Reeves are members of The Property Ombudsman redress scheme and have Client Money protection with ARLA Propertymark. You can find more information on our website at <https://www.benhams.com/membership/>



Benham & Reeves



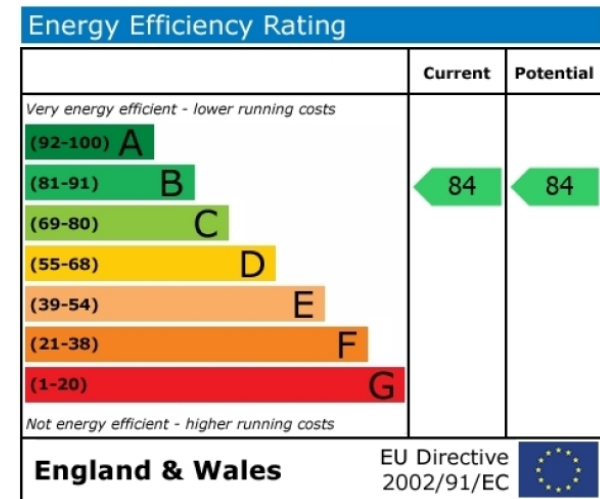
# Damac Tower, 67 Bondway, SW8

£1,200 per week, £5,200 per month + fees

www.benhams.com



UNIT	04	2B-C.2
Kitchen/Living/Dining		27' 7" x 11' 3"
Bedroom 1		16' 1" / 23' 6" x 8' 7"
Bedroom 2		9' 8" / 17' 5" x 9' 7"
Apartment Area		957.7 sq ft
Winter Garden		116.4 sq ft
Total Area		1074.0 sq ft



## London branches open six days a week Mon - Sat

Canary Wharf | City | Colindale | Dartmouth Park | Ealing | Fulham  
 Hammersmith | Hampstead | Highgate | Hyde Park | Kensington | Kew  
 Knightsbridge | Nine Elms | Shoreditch | Southall | Surrey Quays  
 Wapping | Wembley | White City | Woolwich

## International offices

China | Hong Kong SAR | India | Indonesia | Qatar | Malaysia | Middle East |  
 Singapore | South Africa | Thailand | Turkey



Benham & Reeves