



Benham & Reeves

## Heartwood Boulevard, Acton, W3

£415 per week, £1,798 per month + fees

 1 Bedroom    1 Bathroom    Furnished

This large, 20th floor studio apartment offers plenty of natural light, good storage and private balcony. Acton Mainline Station is just a short walk away and is a strategic stop on the new super-fast Elizabeth Line. EPC-B

Please [click here](#) for full detail

## Property features

**Studio apartment | Concierge | Balcony | Wood floors | Furnished | EPC-B | Open plan living and kitchen Space | 448 sq ft | Close to amenities | Nearby Acton Mainline Station**

For more information about this property,  
please call our Ealing branch on

**020 8280 0140**

Redress & Client Money Protection :

Benham and Reeves are members of The Property Ombudsman redress scheme and have Client Money protection with ARLA Propertymark. You can find more information on our website at <https://www.benhams.com/membership/>



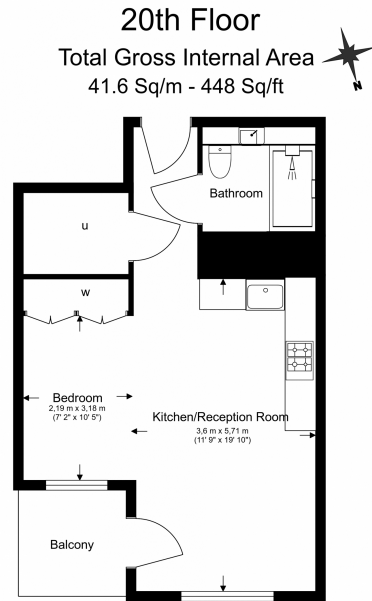
Benham & Reeves



# Heartwood Boulevard, Acton, W3

£415 per week, £1,798 per month + fees

www.benhams.com



Floor Plan measurements are approximate and are for illustrative purposes only. While we do not doubt the floor plans accuracy, we make no guarantee, warranty or representation as to the accuracy and completeness of the floor plan.

Score	Energy rating	Current	Potential
92+	A		
81-91	B	82 B	82 B
69-80	C		
55-68	D		
39-54	E		
21-38	F		
1-20	G		

## London branches open six days a week Mon - Sat

Canary Wharf | City | Colindale | Dartmouth Park | Ealing | Fulham  
Hammersmith | Hampstead | Highgate | Hyde Park | Kensington | Kew  
Knightsbridge | Nine Elms | Shoreditch | Southall | Surrey Quays  
Wapping | Wembley | White City | Woolwich

## International offices

China | Hong Kong SAR | India | Indonesia | Qatar | Malaysia | Middle East |  
Singapore | South Africa | Thailand | Turkey

