



Benham & Reeves

**Troy Court, Kensington High Street, W8**

£675 per week, £2,925 per month + fees

 1 Bedroom     1 Bathroom     Unfurnished

A well-located, 5th floor portered apartment ideally situated for High Street Kensington shopping, dining, transport links, Kensington Gardens and Hyde Park.

Please [click here](#) for full detail

## Property features

**Prime Kensington | One spacious double bedroom | One bathroom | Bright and airy reception room | Well-equipped separate kitchen | EPC- C | Purpose-built development | Good storage throughout | Lift access within the building | Prime High Street Kensington location**

For more information about this property,  
please call our Kensington branch on

**020 7938 3522**

Redress & Client Money Protection :

Benham and Reeves are members of The Property Ombudsman redress scheme and have Client Money protection with ARLA Propertymark. You can find more information on our website at <https://www.benhams.com/membership/>



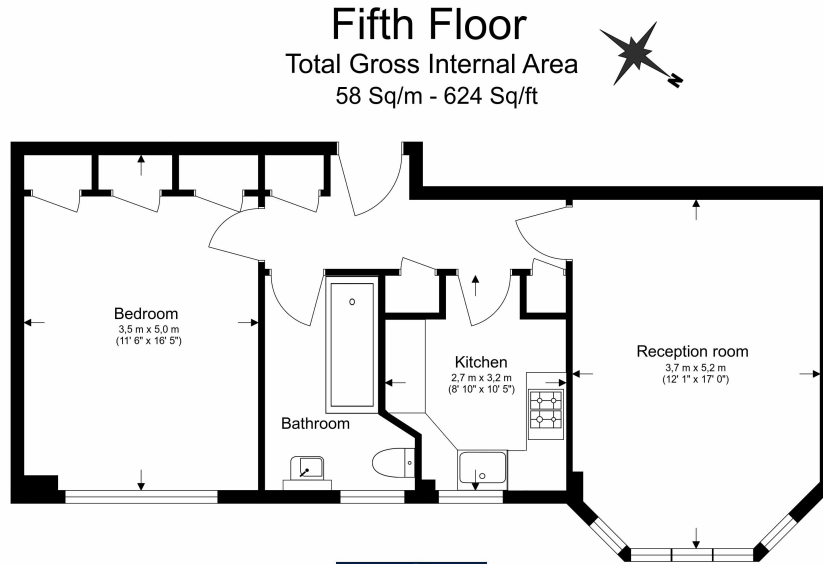
Benham & Reeves



# Troy Court, Kensington High Street, W8

£675 per week, £2,925 per month + fees

www.benhams.com



Floor Plan measurements are approximate and are for illustrative purposes only. While we do not doubt the floor plans accuracy, we make no guarantee, warranty or representation as to the accuracy and completeness of the floor plan.

Score	Energy rating	Current	Potential
92+	A		
81-91	B		
69-80	C	75 C	77 C
55-68	D		
39-54	E		
21-38	F		
1-20	G		

## London branches open six days a week Mon - Sat

Canary Wharf | City | Colindale | Dartmouth Park | Ealing | Fulham  
Hammersmith | Hampstead | Highgate | Hyde Park | Kensington | Kew  
Knightsbridge | Nine Elms | Shoreditch | Southall | Surrey Quays  
Wapping | Wembley | White City | Woolwich

## International offices

China | Hong Kong SAR | India | Indonesia | Qatar | Malaysia | Middle East |  
Singapore | South Africa | Thailand | Turkey



Benham & Reeves