



Benham & Reeves

Wycombe Square, West lodge, W8

£1,150 per week, £4,983 per month + fees

 1 Bedroom  1 Bathroom  Unfurnished

A superb and tastefully presented ground floor apartment with beautiful views of the communal gardens, situated in a secure development with Notting Hill Gate Underground a moments' away. EPC-D

Please [click here](#) for full detail

Property features

Entrance hall | Kitchen | Bedroom | Guest Wc | Porters/Concierge Service | EPC- D | Large Reception Room | Dining Room | En Suite Bathroom | Nearby Notting Hill Gate underground station

For more information about this property, please call our Kensington branch on

020 7938 3522

Redress & Client Money Protection :

Benham and Reeves are members of The Property Ombudsman redress scheme and have Client Money protection with ARLA Propertymark. You can find more information on our website at <https://www.benhams.com/membership/>



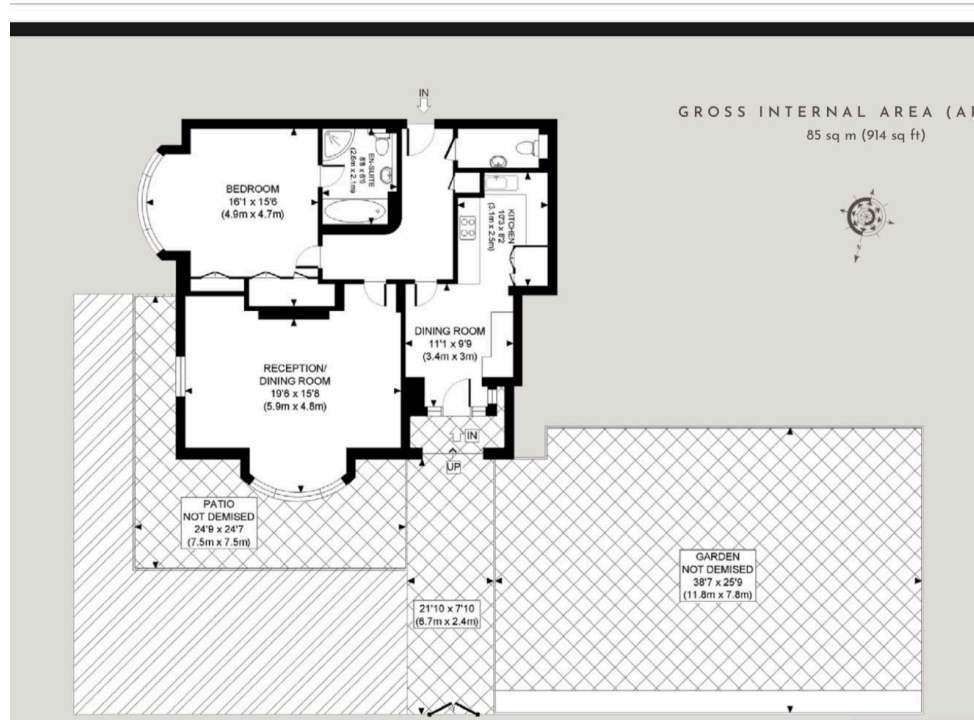
Benham & Reeves



Wycombe Square, West lodge, W8

£1,150 per week, £4,983 per month + fees

www.benhams.com



[See how to improve this property's energy efficiency.](#)

Score	Energy rating	Current	Potential
92+	A		
81-91	B		
69-80	C		70 C
55-68	D	56 D	
39-54	E		
21-38	F		
1-20	G		

London branches open six days a week Mon - Sat

Canary Wharf | City | Colindale | Dartmouth Park | Ealing | Fulham
Hammersmith | Hampstead | Highgate | Hyde Park | Kensington | Kew
Knightsbridge | Nine Elms | Shoreditch | Southall | Surrey Quays
Wapping | Wembley | White City | Woolwich

International offices

China | Hong Kong SAR | India | Indonesia | Qatar | Malaysia | Middle East |
Singapore | South Africa | Thailand | Turkey

