



Benham & Reeves

Abingdon Court, Kensington, W8

£2,500 per week, £10,833 per month + fees

 5 Bedrooms  3 Bathrooms  Furnished

An impressive exceptional large apartment, with AIR COOLING, renovated to an exceptional standard in one of the most desirable residential addresses in London. Close to the green open spaces of Holland Park and Kensington Gardens

Please [click here](#) for full detail

Property features

Prime Kensington | Five Bedrooms | Three Bathrooms | Newly renovated | Separate reception | EPC-D | Underfloor heating | Nearby to transport links | Close to Local amenities | Moments away from Holland Park

For more information about this property, please call our Kensington branch on

020 7938 3522

Redress & Client Money Protection :

Benham and Reeves are members of The Property Ombudsman redress scheme and have Client Money protection with ARLA Propertymark. You can find more information on our website at <https://www.benhams.com/membership/>



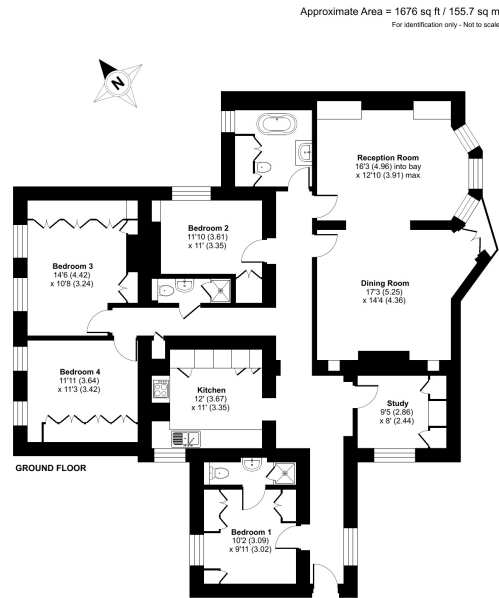
Benham & Reeves



Abingdon Court, Kensington, W8

£2,500 per week, £10,833 per month + fees

www.benhams.com



ⓘ Floor plan produced in accordance with RICS Property Measurement 2nd Edition, Incorporating International Property Measurement Standards (IPMS2 Residential). © nroffcom 2018. Produced for Benham & Reeves. REF: 143152.

Score	Energy rating	Current	Potential
92+	A		
81-91	B		
69-80	C		78 C
55-68	D	67 D	
39-54	E		
21-38	F		
1-20	G		

London branches open six days a week Mon - Sat

Canary Wharf | City | Colindale | Dartmouth Park | Ealing | Fulham
Hammersmith | Hampstead | Highgate | Hyde Park | Kensington | Kew
Knightsbridge | Nine Elms | Shoreditch | Southall | Surrey Quays
Wapping | Wembley | White City | Woolwich

International offices

China | Hong Kong SAR | India | Indonesia | Qatar | Malaysia | Middle East |
Singapore | South Africa | Thailand | Turkey

