



Kingwood House, Chaucer Gardens, Aldgate, E1

Asking Price: £745,000

 Benham
& Reeves

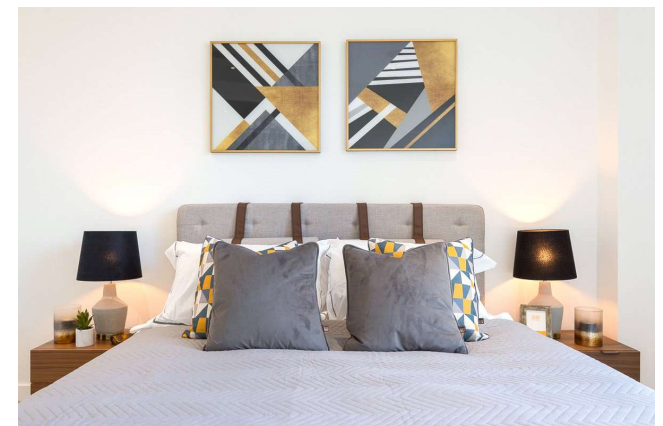
Kingwood House, Chaucer Gardens, Aldgate, E1

 1 Bedroom  1 Bathroom  Leasehold

This impressive 1 bedroom apartment on the 6th floor of Goodman's Fields, developed by St George, Berkeley Homes, offers a balcony with garden views and is finished to the highest standards, making it ideal as an investment or home. Residents enjoy exclusive amenities, including a gym, swimming pool, 24-hour concierge, private screening room and spa, all within walking distance of the City and Shoreditch.

The apartment is thoughtfully designed with spacious living areas, a generously sized double bedroom featuring a high-quality built-in wardrobe and a modern bathroom. The floor-to-ceiling windows provide plenty of natural light and showcase the beautiful garden views. The high-spec kitchen comes fully equipped with integrated appliances, including a fridge-freezer, oven, hob, and dishwasher.

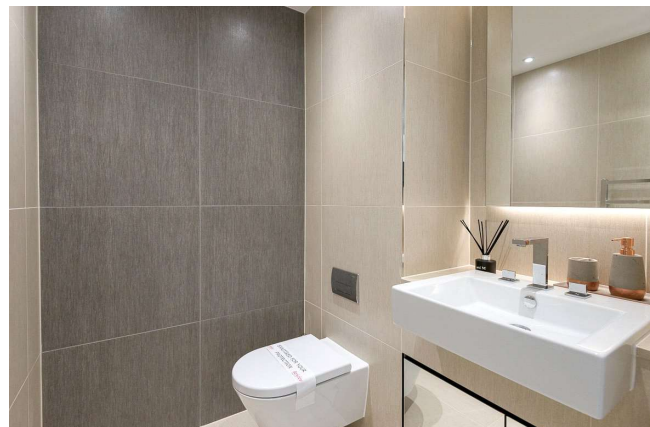
Conveniently located in Aldgate, the apartment benefits from excellent transport links with Aldgate and Aldgate East stations just a short walk away.





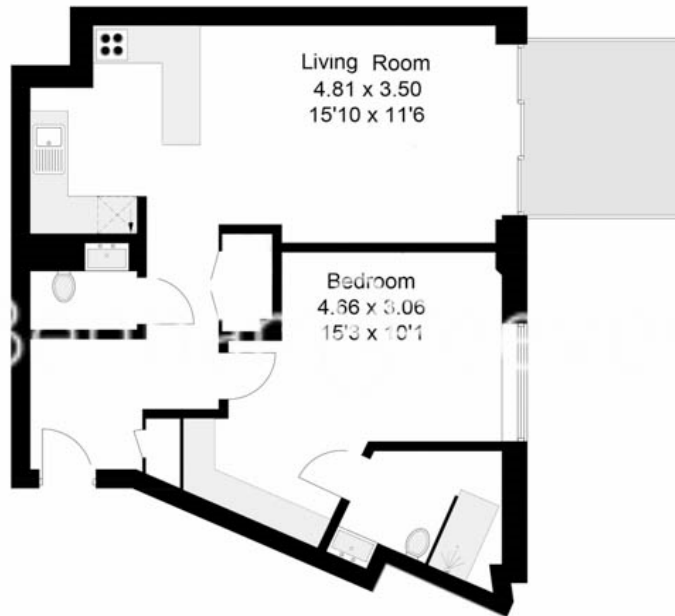
Property Features:

- One Bedroom
- 720 Square Feet (Approx.)
- 6th Floor
- Balcony
- Gym
- Residents' Lounge
- Private Cinema
- Swimming Pool
- 24-Hour Concierge



6th floor

Approx Gross Area: 67 sq m / 720 sq ft



Energy Efficiency Rating		
	Current	Potential
<i>Very energy efficient - lower running costs</i>		
(92+) A		
(81-91) B	86	86
(69-80) C		
(55-68) D		
(39-54) E		
(21-38) F		
(1-20) G		
<i>Not energy efficient - higher running costs</i>		
England, Scotland & Wales	EU Directive 2002/91/EC	

Whilst every attempt has been made to ensure the accuracy of the floor plan contained here, measurements of doors, windows, rooms and any other items are approximate and no responsibility is taken for any error, omission, or mis-statement. This plan is for illustrative purposes only and should be used as such by any prospective purchaser. The services, systems and appliances shown have not been tested and no guarantee as to their operability or efficiency can be given
Made with Metropix ©2015

Terms & Conditions:

These particulars are for guidance purposes only and do not form part of an offer or contract.

Asking Price:	£745,000
Tenure:	Leasehold Expires 31/12/3011 Approximately 985 Years Remaining
Ground Rent:	£500.00 (per annum) For the year 2026
Service Charge:	£4,818.46 (per annum) For the year 2026
Anticipated Rent:	£2,700.00 pcm Approx. 4.3% Yield

Viewings:

All viewings are by appointment only through our City Office.

Our reference: CWH230294

T: 020 7213 9700

E: city.sales@benhams.com

W: www.benhams.com

Disclaimer: These particulars are for guidance purposes only and do not form part of an offer or contract. Whilst care has been taken in their preparation, Benham and Reeves or the vendor shall not be held responsible for any inaccuracies. You should not rely on statements by Benham and Reeves Ltd in the particulars or by word of mouth or in writing as being factually accurate about the property, its condition or its value. Any areas, measurements or distances are approximate. The text, photographs and plans are for guidance only. The photographs appearing in these particulars show only certain parts of the property at the time when the photographs were taken. It should not be assumed that the property has all or any of the necessary planning permission, building regulation consent approval or other required consents for its previous, present or future intended usage. Any intending purchasers must satisfy themselves by inspection or by taking appropriate professional advice. Benham and Reeves Ltd has not rested any of the equipment, fittings or facilities.

London | Canary Wharf | City | Colindale | Dartmouth Park | Ealing | Fulham | Hampstead
Hammersmith | Highgate | Hyde Park | Kensington | Kew | Knightsbridge | Nine Elms
Surrey Quays | Shoreditch | Wembley | Wapping | White City | Woolwich

International | China | Hong Kong | India | Israel | Malaysia | Middle East | Pakistan
Singapore | South Africa | Turkey

