



**Aerodrome Road, Beaufort Park, Colindale, NW9**

Asking Price: £387,000

 Benham  
& Reeves



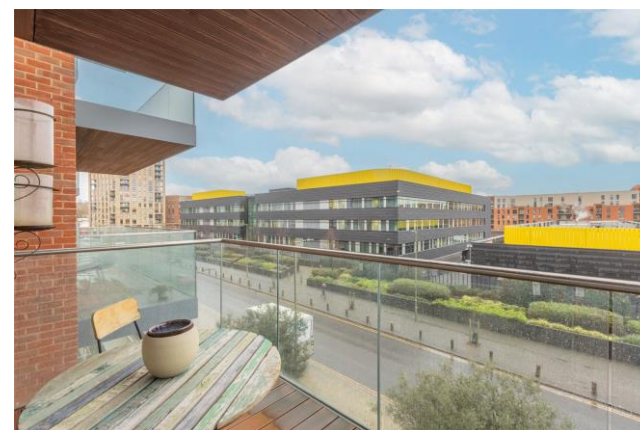
# Aerodrome Road, Beaufort Park, Colindale, NW9

 1 Bedroom (s)  1 Bathroom (s)  Leasehold

Ref# BEA240006

Spanning across 541 square feet (approx.) of luxurious living space is this contemporary one bedroom apartment in the heart of Beaufort Park. Situated on the second floor and facing south over Aerodrome Road this apartment is flooded with natural light throughout. The property boasts a custom designed kitchen with integrated appliances, a carpeted bedroom with a fitted wardrobe and a stylish bathroom suite. Further benefits include utility room with ample storage, parking for one car and no onward selling chain.

North West London's most exciting new destination, created by St George. Set amongst beautifully landscaped gardens and courtyards, the residences at Beaufort Park offer a new kind of London living. As part of this established community, residents benefit from exclusive use of a range of facilities including a stylish gym, swimming pool and spa, a variety of shops, leisure and, restaurants. A true new destination for North West London, with the added benefit of being within walking distance to Colindale Underground Station (Northern Line), which offers direct services to the West End and the City in less than 30 minutes and offers night tube.

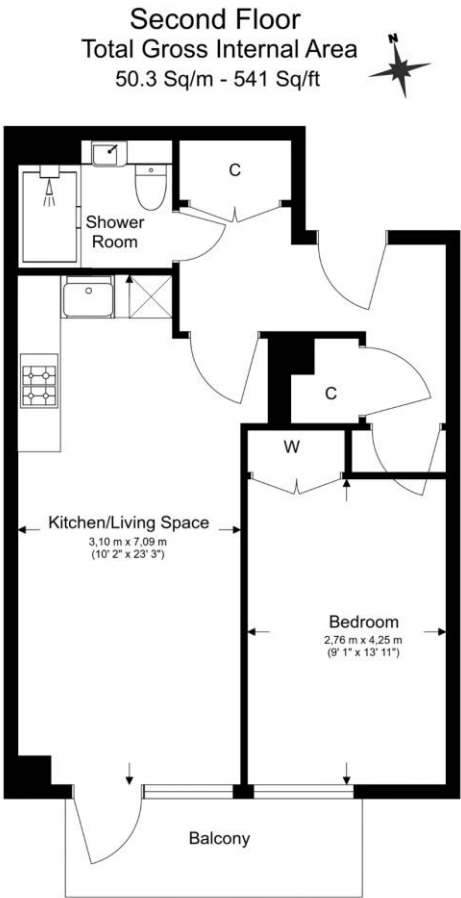




## Property Features:

- One Bedroom Luxury Apartment
- Second Floor
- Circa. 541 Square Feet
- Right To Park
- South Facing Aspect
- Residents Gym, Swimming Pool & Spa Facilities
- 24 Hour Estate Management
- Colindale Tube Station (Northern Line)





Floor Plan measurements are approximate and are for illustrative purposes only. While we do not doubt the floor plans accuracy, we make no guarantee, warranty or representation as to the accuracy and completeness of the floor plan.

Energy Efficiency Rating		
	Current	Potential
Very energy efficient - lower running costs		
(92+) A		
(81-91) B	83	83
(69-80) C		
(55-68) D		
(39-54) E		
(21-38) F		
(1-20) G		
Not energy efficient - higher running costs		
England, Scotland & Wales	EU Directive 2002/91/EC	



## Terms & Conditions:

These particulars are for guidance purposes only and do not form part of an offer or contract.

Asking Price: £387,000

Tenure: Leasehold  
Expires 24/12/3003  
Approximately 979 Years Remaining

Ground Rent: £300.00 (per annum)  
For the year of 2024  
Next Review: 2040  
Next Increase: RPI

Service Charge: £2,949.36 approx. (per annum)  
For the year of 2024

## Viewings:

All viewings are by appointment only through our Beaufort Park Office.

Our reference: BEA240006

T: 020 8732 7980

E: beaufortpark.sales@benhams.com

W: www.benhams.com

Disclaimer: These particulars are for guidance purposes only and do not form part of an offer or contract. Whilst care has been taken in their preparation, Benham and Reeves or the vendor shall not be held responsible for any inaccuracies. You should not rely on statements by Benham and Reeves Ltd in the particulars or by word of mouth or in writing as being factually accurate about the property, its condition or its value. Any areas, measurements or distances are approximate. The text, photographs and plans are for guidance only. The photographs appearing in these particulars show only certain parts of the property at the time when the photographs were taken. It should not be assumed that the property has all or any of the necessary planning permission, building regulation consent approval or other required consents for its previous, present or future intended usage. Any intending purchasers must satisfy themselves by inspection or by taking appropriate professional advice. Benham and Reeves Ltd has not rested any of the equipment, fittings or facilities.

London | Canary Wharf | City | Colindale | Dartmouth Park | Ealing | Fulham | Hampstead  
Hammersmith | Highgate | Hyde Park | Kensington | Kew | Knightsbridge | Nine Elms  
Surrey Quays | Shoreditch | Wembley | Wapping | White City | Woolwich

International | China | Hong Kong | India | Israel | Malaysia | Middle East | Pakistan  
Singapore | South Africa | Turkey

