



Boulevard Drive, Beaufort Park, Colindale, NW9

Asking Price: £260,000

Benham
& Reeves

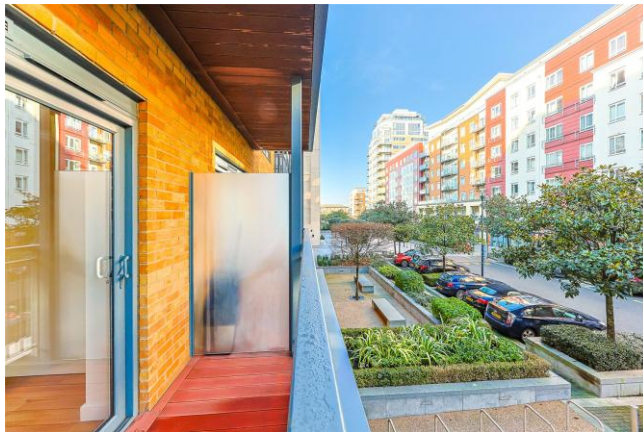
Boulevard Drive, Beaufort Park, Colindale, NW9

 1 Bedroom (s)  1 Bathroom (s)  Leasehold

****Right To Park Included**** Spanning 428 square feet (Approx.) is this modern manhattan apartment in Constantine House. Situated on the first floor and facing over Boulevard Drive, this apartment benefits from a kitchen with built in appliances (oven, hob, microwave, wine cooler, fridge/freezer, and connections for a washing machine), a 3 piece family bathroom, and a private balcony overlooking Boulevard Drive. Further benefits of this stylish apartment include, a colour video entryphone system, an integrated home audio system in living space, with docking station and two ceiling-mounted speakers, satellite TV and FM terrestrial TV points to living space and bedroom.

North West London's most exciting new destination, created by St George. Beaufort Park gives the perfect balance between village character and city living. Beaufort Park itself is a beautiful place to be, with a wealth of carefully landscaped open spaces. As a resident you will also enjoy access to a number of exclusive facilities, including Beaufort Square and its elegant bandstand — a great place to stroll or socialise. The resident-only gym and pool at The Spa is a welcoming place to either work out or unwind. It is fantastically located. The nearest London Underground station is a short walk away and provides swift and convenient journeys to Central London. As part of the new 24-hr weekend service, it has never been easier to enjoy all the excitement of the capital.



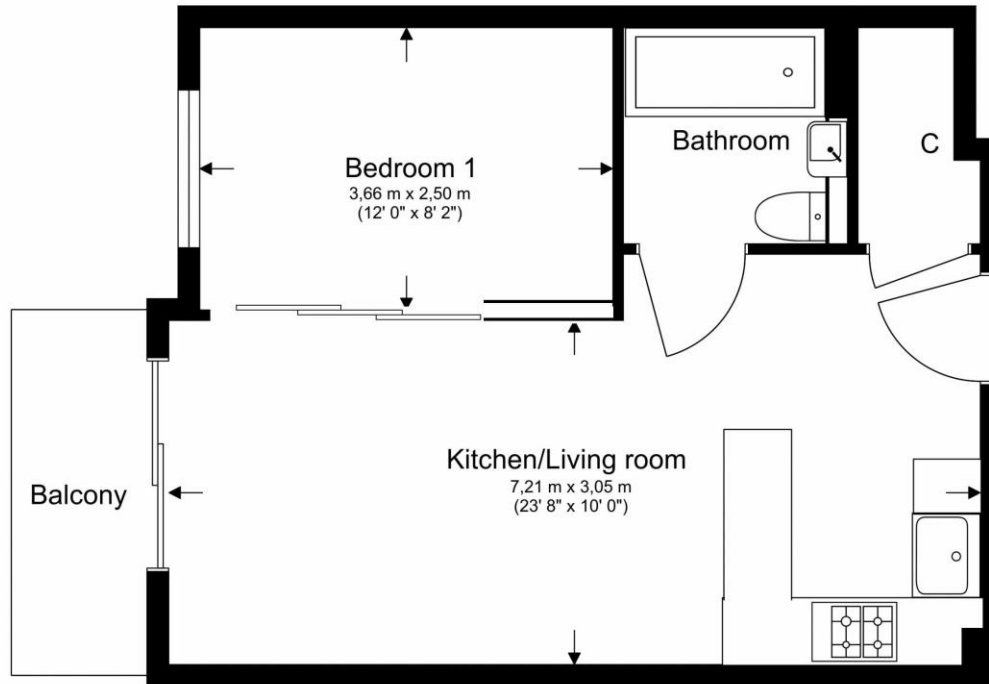


Property Features:

- Right To Park Included
- Chain Free
- Stylish Manhattan Apartment
- First Floor
- 428 Square Feet (Approx.)
- 24 Hour Estate Management
- Residents Gym, Swimming Pool & Spa
- Colindale Tube Station (Northern Line)

First Floor

Total Gross Internal Area
39.7 Sq/m - 428 Sq/ft



Score	Energy rating	Current	Potential
92+	A		
81-91	B		
69-80	C	81 B	86 B
55-68	D		
39-54	E		
21-38	F		
1-20	G		



Floor Plan measurements are approximate and are for illustrative purposes only. While we do not doubt the floor plans accuracy, we make no guarantee, warranty or representation as to the accuracy and completeness of the floor plan.

Terms & Conditions:

These particulars are for guidance purposes only and do not form part of an offer or contract.

Asking Price: £260,000

Tenure: Leasehold
Expires 24/12/3004
Approximately 978 Years Remaining

Ground Rent: £450.00 (per annum)
Review Period: 20 years
Next Review: 2045
Next Increase: 100%

Service Charge: £2,303.52 (per annum)
For the year of 2026

Anticipated Rent: £1,600.00 pcm
Approx. 7.4% Yield

Viewings:

All viewings are by appointment only through our Beaufort Park Office.

Our reference: BEA260022

T: 020 8732 7980

E: beaufortpark.sales@benhams.com

W: www.benhams.com

Disclaimer: These particulars are for guidance purposes only and do not form part of an offer or contract. Whilst care has been taken in their preparation, Benham and Reeves or the vendor shall not be held responsible for any inaccuracies. You should not rely on statements by Benham and Reeves Ltd in the particulars or by word of mouth or in writing as being factually accurate about the property, its condition or its value. Any areas, measurements or distances are approximate. The text, photographs and plans are for guidance only. The photographs appearing in these particulars show only certain parts of the property at the time when the photographs were taken. It should not be assumed that the property has all or any of the necessary planning permission, building regulation consent approval or other required consents for its previous, present or future intended usage. Any intending purchasers must satisfy themselves by inspection or by taking appropriate professional advice. Benham and Reeves Ltd has not rested any of the equipment, fittings or facilities.

London | Canary Wharf | City | Colindale | Dartmouth Park | Ealing | Fulham | Hampstead
Hammersmith | Highgate | Hyde Park | Kensington | Kew | Knightsbridge | Nine Elms
Surrey Quays | Shoreditch | Wembley | Wapping | White City | Woolwich

International | China | Hong Kong | India | Israel | Malaysia | Middle East | Pakistan
Singapore | South Africa | Turkey

