



Arc House, Maltby Street, Bermondsey, SE1

Asking Price: £460,000

Benham
& Reeves

Arc House, Maltby Street, Bermondsey, SE1

 1 Bedroom

 1 Bathroom

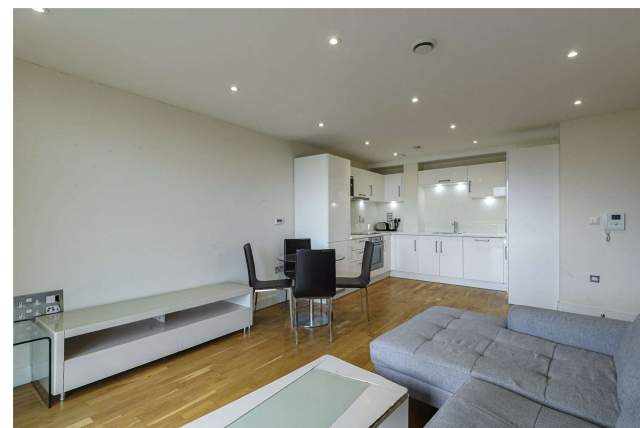
 Leasehold

Situated within the sought-after Tower Bridge Quarter, this beautifully presented one-bedroom apartment with a private south-west-facing balcony is set in Arc House on Maltby Street and is offered to the market chain-free.

The apartment features a bright and spacious open-plan living, dining and kitchen area, complete with integrated appliances, floor-to-ceiling glazing and direct access to a private balcony. The generous double bedroom benefits from built-in storage, while a stylish contemporary bathroom completes the accommodation.

Perfectly positioned in the heart of Bermondsey, the property is just moments from the renowned Maltby Street Market, celebrated for its artisan food stalls and independent retailers. The vibrant cafés, restaurants and bars of Bermondsey Street are within easy reach, while the world-famous Borough Market offers an exceptional culinary destination nearby.

Excellent transport links are close at hand, with both Bermondsey Station and London Bridge Station within easy reach, offering access to the Jubilee and Northern lines as well as National Rail services across London. Tower Hill Station, Thames Clipper river services and a range of local bus routes provide further convenient connections to the City, Canary Wharf and the West End.



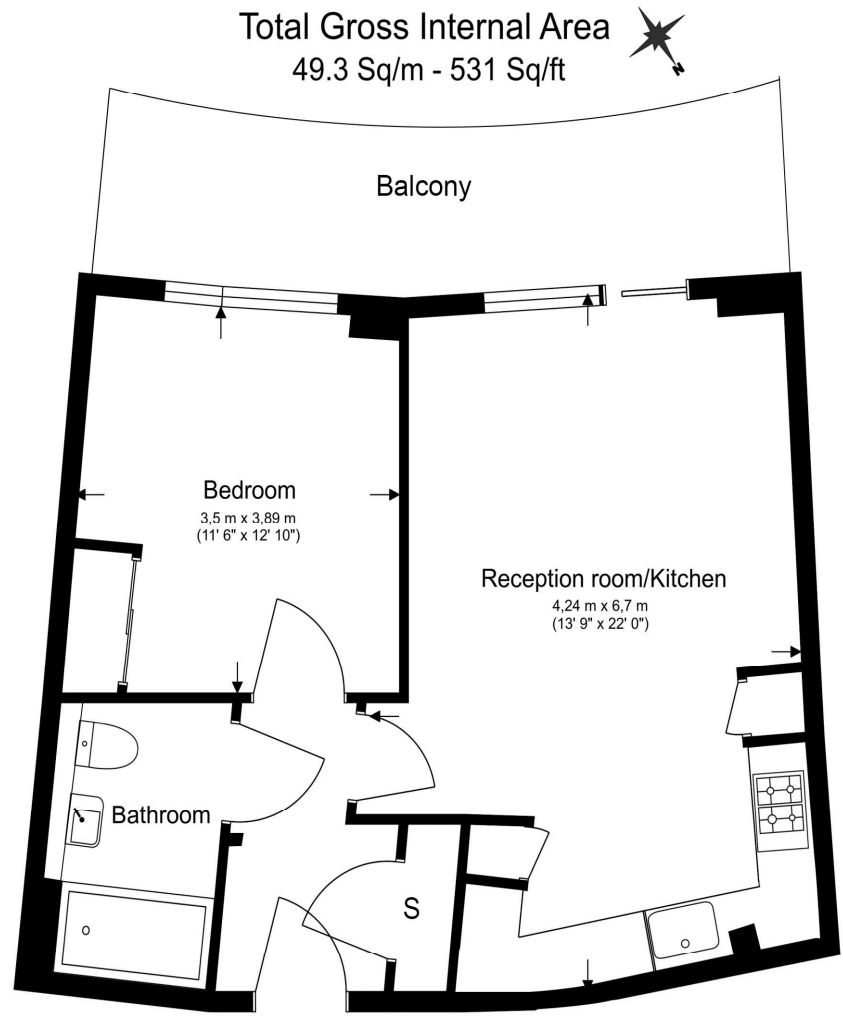


Property Features:

- One Bedroom
- One Bathroom
- Wooden Flooring
- Chain Free
- Private South-West-Facing Balcony
- Communal Gardens
- Great Transport Connections



Arc House, Maltby Street, Bermondsey, SE1



Score	Energy rating	Current	Potential
92+	A		
81-91	B	83 B	83 B
69-80	C		
55-68	D		
39-54	E		
21-38	F		
1-20	G		



Floor Plan measurements are approximate and are for illustrative purposes only. While we do not doubt the floor plans accuracy, we make no guarantee, warranty or representation as to the accuracy and completeness of the floor plan.

Terms & Conditions:

These particulars are for guidance purposes only and do not form part of an offer or contract.

Asking Price:	£460,000
Tenure:	Leasehold Expires 01/04/2265 Approximately 238 Years Remaining
Ground Rent:	£250.00 (per annum) For the year 2026
Service Charge:	£5,311.00 (per annum) From May 2026 to April 2027
Anticipated Rent:	£2,000.00 pcm Approx. 5.2% Yield

Viewings:

All viewings are by appointment only through our City Office.

Our reference: CWH260130

T: 020 7213 9700

E: city.sales@benhams.com

W: www.benhams.com

Disclaimer: These particulars are for guidance purposes only and do not form part of an offer or contract. Whilst care has been taken in their preparation, Benham and Reeves or the vendor shall not be held responsible for any inaccuracies. You should not rely on statements by Benham and Reeves Ltd in the particulars or by word of mouth or in writing as being factually accurate about the property, its condition or its value. Any areas, measurements or distances are approximate. The text, photographs and plans are for guidance only. The photographs appearing in these particulars show only certain parts of the property at the time when the photographs were taken. It should not be assumed that the property has all or any of the necessary planning permission, building regulation consent approval or other required consents for it previous, present or future intended usage. Any intending purchasers must satisfy themselves by inspection or by taking appropriate professional advice. Benham and Reeves Ltd has not rested any of the equipment, fittings or facilities.

London | Canary Wharf | City | Colindale | Dartmouth Park | Ealing | Fulham | Hampstead
Hammersmith | Highgate | Hyde Park | Kensington | Kew | Knightsbridge | Nine Elms
Surrey Quays | Shoreditch | Wembley | Wapping | White City | Woolwich

International | China | Hong Kong | India | Israel | Malaysia | Middle East | Pakistan
Singapore | South Africa | Turkey

