



Filmworks Walk, Ealing, W5

Asking Price: £485,000

Benham
& Reeves

Filmworks Walk, Ealing, W5

 1 Bedroom (s)  1 Bathroom (s)  Leasehold

A luxurious one bedroom apartment located on the second floor of the highly sought after Filmworks development W5. Spanning an approximate 575 square feet internally, this apartment comprises of a large living/dining area with wood effect timber flooring throughout, private balcony leading out from the reception room with western views and a fully fitted bespoke kitchen with integrated Bosch appliances such as fridge/freezer, oven, electric hob, microwave and dishwasher.

This well-presented apartment offers a large and spacious bedroom with carpet finish and fitted wardrobe with extra storage space around. This property also includes a modern finished three-piece family bathroom, video entry phone system and under-floor heating in the living room, kitchen, hallway and bedroom.

Filmworks offers contemporary living for residents in the heart of Ealing. This development is surrounded by a mix of restaurants, bars and eight-screen cinema in Ealing's open piazza. Filmworks has been designed with art deco-inspired interiors with a concierge to welcome their residents. Bogart House, Filmworks is moments away from Ealing Broadway Station and easy access towards Central London and Heathrow Airport.

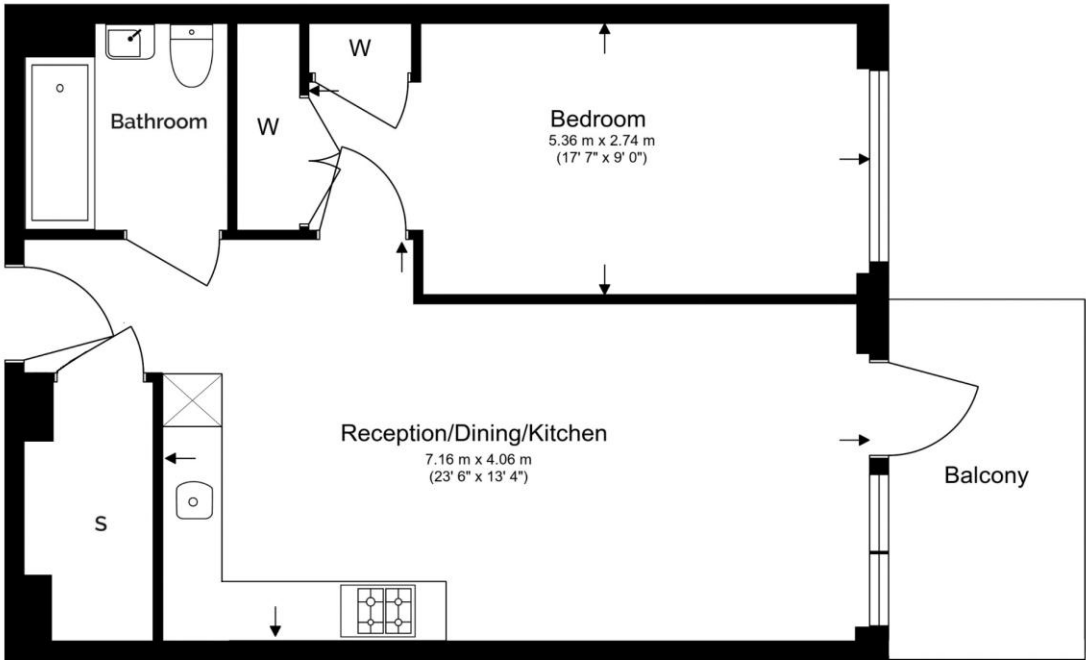




Property Features:

- Stylish One Bedroom Apartment
- 575 Square Feet (Approx.)
- Second Floor
- West Facing Aspect
- 24 Hour Concierge
- Eight-Screen Cinema, Café & Bar
- Ealing Broadway Station (Elizabeth Line)
- Chain Free

2nd Floor
 Total Gross Internal Area
 53.4 Sq/m - 575 Sq/ft



Floor Plan measurements are approximate and are for illustrative purposes only. While we do not doubt the floor plans accuracy, we make no guarantee, warranty or representation as to the accuracy and completeness of the floor plan.

Energy Efficiency Rating		
	Current	Potential
Very energy efficient - lower running costs		
(92+) A		
(81-91) B	84	84
(69-80) C		
(55-68) D		
(39-54) E		
(21-38) F		
(1-20) G		
Not energy efficient - higher running costs		
England, Scotland & Wales	EU Directive 2002/91/EC	

Terms & Conditions:

These particulars are for guidance purposes only and do not form part of an offer or contract.

Asking Price:	£485,000
Tenure:	Leasehold Expires 12/12/3018 Approximately 992 Years Remaining
Ground Rent:	£225.00 (per annum) Review: 21 years Next Increase: 01 January 2042 Increase: By RPI for the relevant year
Service Charge:	£3,168.00 (per annum) For the year of 2026
Anticipated Rent:	£2,500.00 pcm Approx. 6.2% Yield

Viewings:

All viewings are by appointment only through our Ealing Office.

Our reference: BEA240170

T: 020 8280 0140

E: ealing.sales@benhams.com

W: www.benhams.com

Disclaimer: These particulars are for guidance purposes only and do not form part of an offer or contract. Whilst care has been taken in their preparation, Benham and Reeves or the vendor shall not be held responsible for any inaccuracies. You should not rely on statements by Benham and Reeves Ltd in the particulars or by word of mouth or in writing as being factually accurate about the property, its condition or its value. Any areas, measurements or distances are approximate. The text, photographs and plans are for guidance only. The photographs appearing in these particulars show only certain parts of the property at the time when the photographs were taken. It should not be assumed that the property has all or any of the necessary planning permission, building regulation consent approval or other required consents for its previous, present or future intended usage. Any intending purchasers must satisfy themselves by inspection or by taking appropriate professional advice. Benham and Reeves Ltd has not rested any of the equipment, fittings or facilities.

London | Canary Wharf | City | Colindale | Dartmouth Park | Ealing | Fulham | Hampstead
Hammersmith | Highgate | Hyde Park | Kensington | Kew | Knightsbridge | Nine Elms
Surrey Quays | Shoreditch | Wembley | Wapping | White City | Woolwich

International | China | Hong Kong | India | Israel | Malaysia | Middle East | Pakistan
Singapore | South Africa | Turkey

