



Robertson Apartments, Harrow, HA1

Price Reduced to: £341,500

 Benham
& Reeves

Robertson Apartments, 4 Donovan Way, Harrow, HA1

 1 Bedroom  1 Bathroom  Leasehold

Estimated to complete in Q4 2025 is this one bedroom apartment on the third floor of Robertson Apartments. Spanning an impressive 609 square feet of luxury living space, this apartment will include a custom designed kitchen benefiting from fully integrated appliances, soft-close doors and drawers, matching worktop and upstands. A stylish bathroom suite made up of Porcelain floor tiles and Ceramic wall tiles, including a white hand wash basin, back to wall WC pan with soft close WC seat and white acrylic bath. Further benefits include a east facing balcony overlooking the podium gardens, video door entry, pendant lighting in hallway, living area and bedroom, engineered laminate flooring to hallway, kitchen and living/dining areas.

Not only does every Barratt London home come with a ten-year structural guarantee from the NHBC, it also comes with a two-year fixtures and fittings warranty**, giving you added peace of mind from the moment you move in.

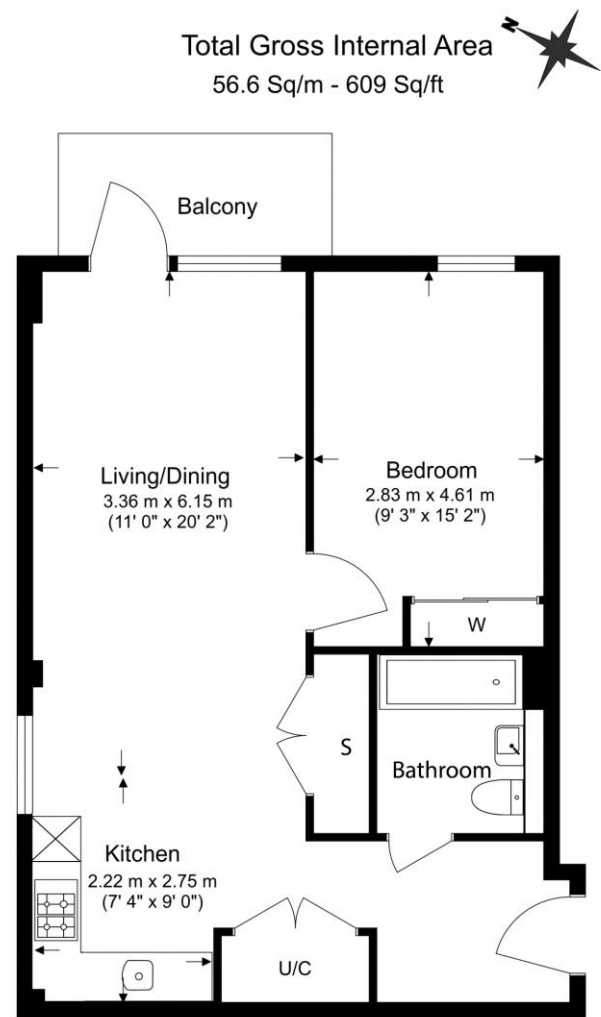
Home to the Kodak factory for 125 years, Eastman Village is set to revitalise this landmark site and create a community of more than phase of the development will provide 460 one, two and three-bedroom apartments and three and four bedroom houses. An idyllic location for young professionals and families alike, this is your chance to own both a piece of local history and a part of Harrow's future. You'll also be conveniently located a short walk from the amenities of Wealdstone High Street, which include Harrow & Wealdstone train station, shops, restaurants, cafés and banks.

Property Features:

- New One Bedroom Apartment
- Estimated Completion Q4 2025
- Third Floor
- Circa. Total Area: 609 Square Feet
- East Facing Balcony Overlooking Podium Gardens
- Harrow & Wealdstone Station (Bakerloo Line & Overground Trains)
- Residents Gym & Concierge Service
- 10 Year NHBC** & 999 Year Lease



Robertson Apartments, 4 Donovan Way, Harrow, HA1



Floor Plan measurements are approximate and are for illustrative purposes only. While we do not doubt the floor plans accuracy, we make no guarantee, warranty or representation as to the accuracy and completeness of the floor plan.

Robertson Apartments, 4 Donovan Way, Harrow, HA1



Terms & Conditions:

These particulars are for guidance purposes only and do not form part of an offer or contract.

Price Reduced to: £341,500

Tenure: Leasehold
Expires 30/03/2022
Approximately 996 Years Remaining

Ground Rent: Peppercorn (per annum)
For the year of 2025

Service Charge: £1,884.00 (per annum)
Estimated for the year of 2025

Viewings:

All viewings are by appointment only through our Beaufort Park Office.

Our reference: BEA250099

T: 020 8732 7980

E: beaufortpark.sales@benhams.com

W: www.benhams.com

Disclaimer: These particulars are for guidance purposes only and do not form part of an offer or contract. Whilst care has been taken in their preparation, Benham and Reeves or the vendor shall not be held responsible for any inaccuracies. You should not rely on statements by Benham and Reeves Ltd in the particulars or by word of mouth or in writing as being factually accurate about the property, its condition or its value. Any areas, measurements or distances are approximate. The text, photographs and plans are for guidance only. The photographs appearing in these particulars show only certain parts of the property at the time when the photographs were taken. It should not be assumed that the property has all or any of the necessary planning permission, building regulation consent approval or other required consents for it previous, present or future intended usage. Any intending purchasers must satisfy themselves by inspection or by taking appropriate professional advice. Benham and Reeves Ltd has not rested any of the equipment, fittings or facilities.

London | Canary Wharf | City | Colindale | Dartmouth Park | Ealing | Fulham | Hampstead
Hammersmith | Highgate | Hyde Park | Kensington | Kew | Knightsbridge | Nine Elms
Surrey Quays | Shoreditch | Wembley | Wapping | White City | Woolwich

International | China | Hong Kong | India | Israel | Malaysia | Middle East | Pakistan
Singapore | South Africa | Turkey



Benham and Reeves Limited. Registered In England No. 01633981
Registered Office: 28 Church Road, Stanmore, Middlesex HA7 4XR