



Camley Street, King's Cross, N1C

Asking Price: £730,000

 Benham
& Reeves

Camley Street, King's Cross, N1C

 1 Bedroom

 1 Bathroom

 Leasehold

A superb one bedroom apartment situated on the 6th floor of the highly desirable Onyx Apartments in Kings Cross.

This well presented apartment features a spacious 16'10 reception room with contemporary fully fitted open plan kitchen and floor to ceiling double glazed sliding doors opening to the private terrace offering far reaching views. There is a spacious dual aspect double bedroom with full length fitted wardrobes and a stylish fully tiled bathroom.

Further benefits include a 24-hour concierge service, bike storage and access to the residents rooftop terrace.

The property is enviably located moments from Granary Square and the Coal Drops Yard shopping and dining districts, with over 50 shops and restaurants. The West End and bustling high streets of Islington and Camden are all within easy reach. There are also excellent transport links including St. Pancras International station and King's Cross station which offers access to the Northern, Piccadilly, Victoria, Metropolitan, Circle and Hammersmith and City lines.



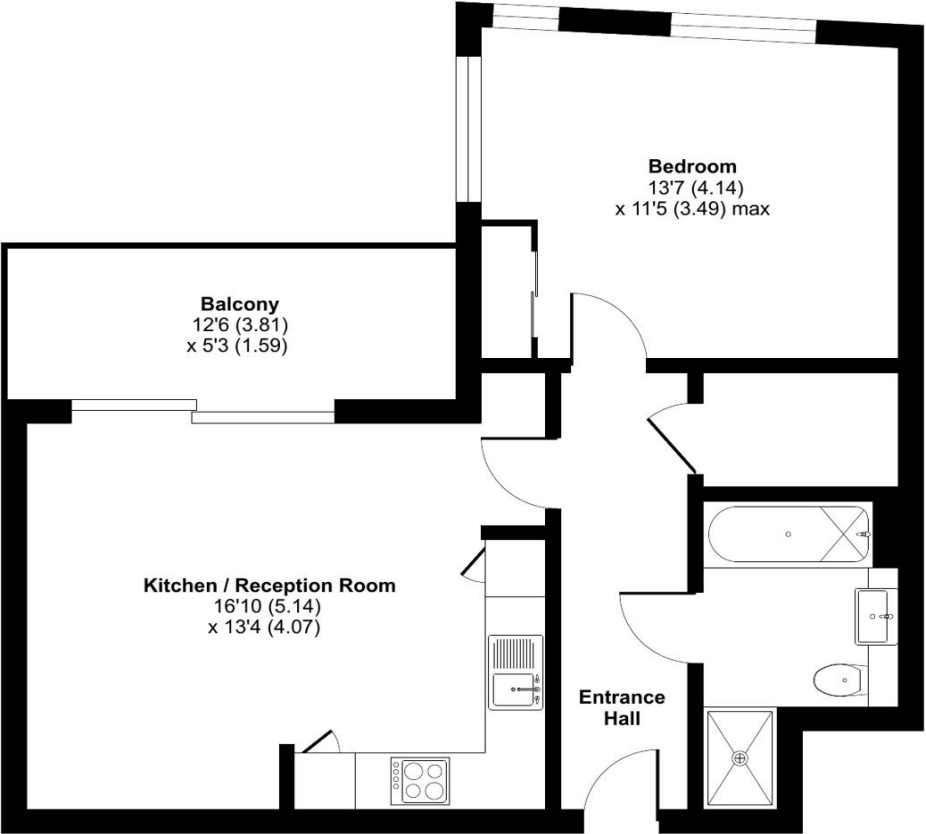


Property Features:

- Double Bedroom
- Bathroom
- Reception Room
- Fully Fitted Open Plan Kitchen
- Private Balcony
- Lift Access
- 24-hour concierge service
- Residents Roof Garden

Camley Street, King's Cross, N1C

Approximate Area = 544 sq ft / 50.5 sq m
For identification only - Not to scale



SIXTH FLOOR

Energy Efficiency Rating		
	Current	Potential
Very energy efficient - lower running costs		
(92+) A		
(81-91) B	85	85
(69-80) C		
(55-68) D		
(39-54) E		
(21-38) F		
(1-20) G		
Not energy efficient - higher running costs		
England, Scotland & Wales	EU Directive 2002/91/EC	

Terms & Conditions:

These particulars are for guidance purposes only and do not form part of an offer or contract.

Asking Price:	£730,000
Tenure:	Leasehold Expires 16/12/3017 Approximately 993 Years Remaining
Ground Rent:	£500.00 (per annum) 2025
Service Charge:	£4,637.19 approx. (per annum) 2025

Viewings:

All viewings are by appointment only through our Dartmouth Park Office.

Our reference: CHN240010

T: 0207 319 9660

E: dartmouthpark.sales@benhams.com

W: www.benhams.com

Disclaimer: These particulars are for guidance purposes only and do not form part of an offer or contract. Whilst care has been taken in their preparation, Benham and Reeves or the vendor shall not be held responsible for any inaccuracies. You should not rely on statements by Benham and Reeves Ltd in the particulars or by word of mouth or in writing as being factually accurate about the property, its condition or its value. Any areas, measurements or distances are approximate. The text, photographs and plans are for guidance only. The photographs appearing in these particulars show only certain parts of the property at the time when the photographs were taken. It should not be assumed that the property has all or any of the necessary planning permission, building regulation consent approval or other required consents for its previous, present or future intended usage. Any intending purchasers must satisfy themselves by inspection or by taking appropriate professional advice. Benham and Reeves Ltd has not rested any of the equipment, fittings or facilities.

London | Canary Wharf | City | Colindale | Dartmouth Park | Ealing | Fulham | Hampstead
Hammersmith | Highgate | Hyde Park | Kensington | Kew | Knightsbridge | Nine Elms
Surrey Quays | Shoreditch | Wembley | Wapping | White City | Woolwich

International | China | Hong Kong | India | Israel | Malaysia | Middle East | Pakistan
Singapore | South Africa | Turkey

