



Rathbone Place, Marylebone, W1T

Asking Price: £1,080,000

Benham
& Reeves

Rathbone Place, Marylebone, W1T

 1 Bedroom (s)  1 Bathroom (s)  Leasehold

A contemporary one bedroom apartment set on the sixth floor of Rathbone Place, Fitzrovia.

Spanning an approximate 584 square feet, this apartment comprises a very large open-plan double reception room with dining space and sizeable floor-to-ceiling windows affording lots of natural daylight into the property. There's a fully fitted modern kitchen with built-in well-known appliances (including an add-on feature: wine cooler), a large main bedroom with a built-in wardrobe, a cream stone finish double en-suite shower room with double basins, a good-sized private balcony which is accessible from the master bedroom & reception room.

The property benefits from air conditioning, underfloor heating, an air ventilation system, ceiling speakers, an iDevice controllable home automation system, double-glazed windows, hardwood floors in the reception room, luxury comfort carpet in the bedrooms, a good-sized hallway with a separate utility room.

Rathbone Place is located in the heart of Central London. Residents freely enjoy 24-hour security, concierge, CCTV, lift access, meeting lounge, residents' lounge, beautiful swimming pool, sauna, steam room, top-end fully equipped onsite gym facility, wine cellar, tasting room and high-spec cineplex (personal Blu-ray disc on demand).

The development is within easy access to a number of transport stations, with Tottenham Court Road, Oxford Circus and Goodge Street underground stations being close by (Bakerloo, Central, Northern & Victoria Lines). There are also plenty of local buses available along Oxford Street. Rathbone Place is within close proximity to local restaurants, bars, cafes and a range of high street stores.





Property Features:

- One Bedroom
- One Bathroom
- Sixth Floor
- 584 Square Feet (Approx.)
- Private Balcony
- Underfloor Heating & Comfort Cooling
- Modern and Spacious
- 24-Hour Concierge / Swimming Pool / Spa Facilities / Gym / Cineplex / Wine Cellar and Tasting Room
- Close Proximity To Local Amenities
- Oxford Circus Station (Zone 1)

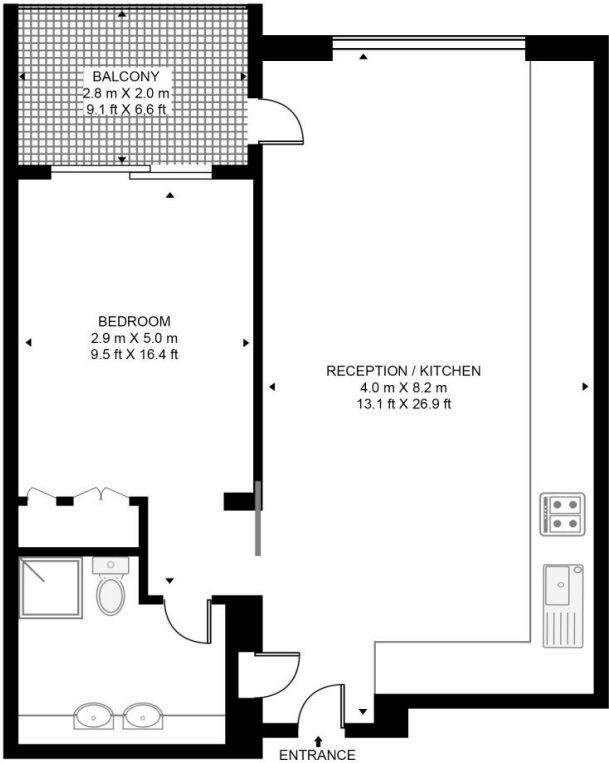


Rathbone Place, Marylebone, W1T



RATHBONE PLACE

APPROXIMATE GROSS INTERNAL FLOOR AREA 584 SQ.FT (54.3 SQ.M)



SIXTH FLOOR

Score	Energy rating	Current	Potential
92+	A		
81-91	B	86 B	86 B
69-80	C		
55-68	D		
39-54	E		
21-38	F		
1-20	G		

This floor plan has been defined by the RICS Code of Measurement. This floor plan and all others are for approximate representative purposes only and upon usage is agreed to as such by the client.
 WWW: hdvirtualart.com | TEL: 0203.974.1567 | EMAIL: info@hdvirtualart.com

Terms & Conditions:

These particulars are for guidance purposes only and do not form part of an offer or contract.

Asking Price:	£1,080,000
Tenure:	Leasehold Expires 22/12/3013 Approximately 987 Years Remaining
Ground Rent:	£500.00 (per annum) Review Period: 25 years Next: 2040
Service Charge:	£11,000.00 (per annum) for the year 2026
Anticipated Rent:	£5,000.00 pcm Approx. 5.6% Yield

Viewings:

All viewings are by appointment only through our Hyde Park Office.

Our reference: KEN250254

T: 020 7402 9866

E: hydepark.sales@benhams.com

W: www.benhams.com

Disclaimer: These particulars are for guidance purposes only and do not form part of an offer or contract. Whilst care has been taken in their preparation, Benham and Reeves or the vendor shall not be held responsible for any inaccuracies. You should not rely on statements by Benham and Reeves Ltd in the particulars or by word of mouth or in writing as being factually accurate about the property, its condition or its value. Any areas, measurements or distances are approximate. The text, photographs and plans are for guidance only. The photographs appearing in these particulars show only certain parts of the property at the time when the photographs were taken. It should not be assumed that the property has all or any of the necessary planning permission, building regulation consent approval or other required consents for its previous, present or future intended usage. Any intending purchasers must satisfy themselves by inspection or by taking appropriate professional advice. Benham and Reeves Ltd has not rested any of the equipment, fittings or facilities.

London | Canary Wharf | City | Colindale | Dartmouth Park | Ealing | Fulham | Hampstead
Hammersmith | Highgate | Hyde Park | Kensington | Kew | Knightsbridge | Nine Elms
Surrey Quays | Shoreditch | Wembley | Wapping | White City | Woolwich

International | China | Hong Kong | India | Israel | Malaysia | Middle East | Pakistan
Singapore | South Africa | Turkey

