



Cutter Lane, North Greenwich, SE10

Asking Price: £400,000



Cutter Lane, North Greenwich, SE10

 1 Bedroom

 1 Bathroom

 To be advised

An exquisite one bedroom apartment located in Cutter Lane, North Greenwich, spanning approximately 536 square feet and situated on the seventh floor of a contemporary building. This stunning property features an open-plan kitchen with streamlined, integrated appliances that flow into the living area, ideal for comfort, and a west-facing balcony, ideal for morning coffee.

With prime views over the River Thames, this generously appointed apartment is filled with natural light, revealing the essence of living amid natural green spaces close to the water's edge.

Residents of Greenwich Peninsula benefit from facilities such as a concierge. The development is also extremely close to the O2 Arena, so you are spoilt for choice when it comes to entertainment, with the many bars and restaurants that the O2 and the surrounding area have to offer.

Transport links include North Greenwich station (Jubilee line), the Thames river boat service, and a cable car service to the Royal Dock and Excel Centre.





Property Features:

- One Bedroom
- 536 Square Feet (Approx)
- 7th Floor
- West-Facing Balcony
- Swimming Pool and Gym
- 24-Hour Concierge
- Central Park
- North Greenwich Station
- Emirates Cable Car

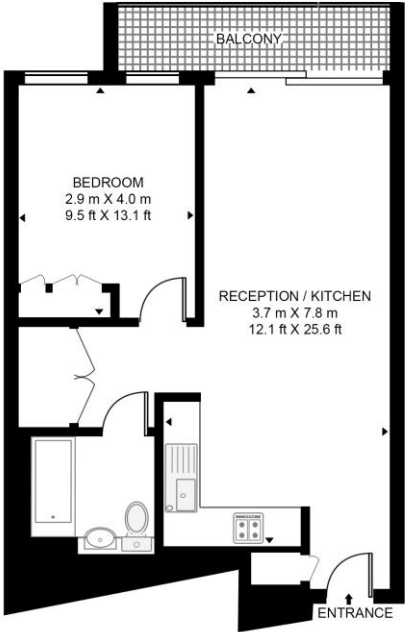


Cutter Lane, North Greenwich, SE10



CUTTER LANE

APPROXIMATE GROSS INTERNAL FLOOR AREA 536 SQ.FT (49.8 SQ.M)



Score	Energy rating	Current	Potential
92+	A		
81-91	B	85 B	85 B
69-80	C		
55-68	D		
39-54	E		
21-38	F		
1-20	G		

SEVENTH FLOOR

This floor plan has been defined by the RICS Code of Measurement. This floor plan and all others are for approximate representative purposes only and upon usage is agreed to as such by the client.
 WWW: hvirtualart.com | TEL: 0203.974.1567 | EMAIL: info@hvirtualart.com

Terms & Conditions:

These particulars are for guidance purposes only and do not form part of an offer or contract.

Asking Price:	£400,000
Tenure:	Leasehold Expires 06/06/2254 Approximately 228 Years Remaining
Ground Rent:	£570.17 (per annum) For the year 2026
Service Charge:	£4,837.56 (per annum) For the year 2026 Half Yearly Service Charge
Anticipated Rent:	£2,475.00 pcm Approx. 7.4% Yield

Viewings:

All viewings are by appointment only through our Woolwich Office.

Our reference: CHN260001

T: 020 8051 0700

E: woolwich.sales@benhams.com

W: www.benhams.com

Disclaimer: These particulars are for guidance purposes only and do not form part of an offer or contract. Whilst care has been taken in their preparation, Benham and Reeves or the vendor shall not be held responsible for any inaccuracies. You should not rely on statements by Benham and Reeves Ltd in the particulars or by word of mouth or in writing as being factually accurate about the property, its condition or its value. Any areas, measurements or distances are approximate. The text, photographs and plans are for guidance only. The photographs appearing in these particulars show only certain parts of the property at the time when the photographs were taken. It should not be assumed that the property has all or any of the necessary planning permission, building regulation consent approval or other required consents for its previous, present or future intended usage. Any intending purchasers must satisfy themselves by inspection or by taking appropriate professional advice. Benham and Reeves Ltd has not rested any of the equipment, fittings or facilities.

London | Canary Wharf | City | Colindale | Dartmouth Park | Ealing | Fulham | Hampstead
Hammersmith | Highgate | Hyde Park | Kensington | Kew | Knightsbridge | Nine Elms
Surrey Quays | Shoreditch | Wembley | Wapping | White City | Woolwich

International | China | Hong Kong | India | Israel | Malaysia | Middle East | Pakistan
Singapore | South Africa | Turkey

