



Hudson House, Faraday Road, Notting Hill, W10

Asking Price: £475,000

Benham
& Reeves

Hudson House, Faraday Road, Notting Hill, W10

 1 Bedroom  1 Bathroom  Leasehold

A stunning, third-floor one bedroom apartment located within the ever-popular Portobello Square development.

The accommodation, spanning approximately 539 integrated Siemens appliances, and sleek chrome fittings, all in keeping with the contemporary nature of the build. The double bedroom boasts built-in wardrobes and has access to the balcony. The bathroom is tiled from floor to ceiling and features a shower over the bath, a heated towel rack and an abundance of storage.

Portobello Square is becoming one of the area's most desirable addresses with many boutiques, cafés and restaurants on its doorstep and excellent connections to the rest of London and beyond. The development is tucked away behind the fashionable Golborne Road and next to the world-famous Portobello Road. Three tube stations are nearby, and a good choice of buses swiftly links Faraday Road with the heart of London.

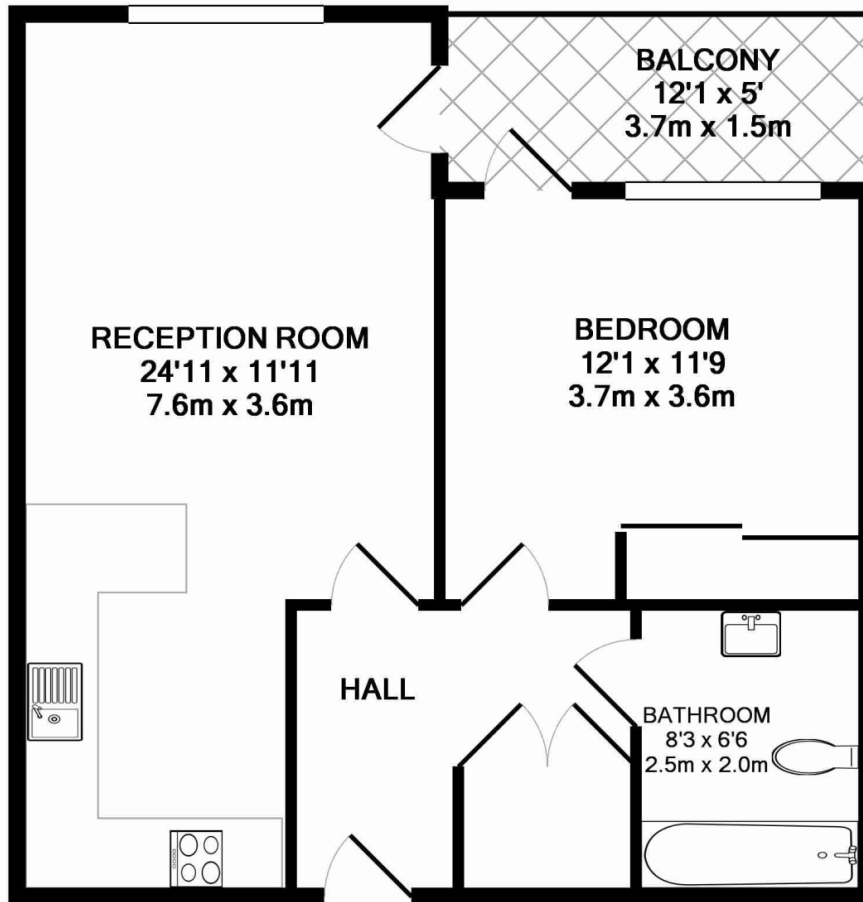




Property Features:

- One Bedroom
- One Bathroom
- 539 Square Feet (Approx.)
- Third Floor
- Balcony & Lift
- Modern Interiors
- Ladbroke Grove Underground (Zone 2)





Score	Energy rating	Current	Potential
92+	A		
81-91	B	83 B	83 B
69-80	C		
55-68	D		
39-54	E		
21-38	F		
1-20	G		

FR.W10 - 3RD FLOOR

TOTAL APPROX. FLOOR AREA 539 SQ.FT. (50.0 SQ.M.)

Whilst every attempt has been made to ensure the accuracy of the floor plan contained here, measurements of doors, windows, rooms and any other items are approximate and no responsibility is taken for any error, omission, or mis-statement. This plan is for illustrative purposes only and should be used as such by any prospective purchaser. The services, systems and appliances shown have not been tested and no guarantee as to their operability or efficiency can be given

Terms & Conditions:

These particulars are for guidance purposes only and do not form part of an offer or contract.

Asking Price:	£475,000
Tenure:	Leasehold Expires 19/09/3010 Approximately 984 Years Remaining
Ground Rent:	£350.00 (per annum) to March 2026
Service Charge:	£3,088.92 (per annum) for the year 2026
Anticipated Rent:	£2,500.00 pcm Approx. 6.3% Yield

Viewings:

All viewings are by appointment only through our Hyde Park Office.

Our reference: KEN260054

T: 020 7938 3522

E: hydepark.sales@benhams.com

W: www.benhams.com

Disclaimer: These particulars are for guidance purposes only and do not form part of an offer or contract. Whilst care has been taken in their preparation, Benham and Reeves or the vendor shall not be held responsible for any inaccuracies. You should not rely on statements by Benham and Reeves Ltd in the particulars or by word of mouth or in writing as being factually accurate about the property, its condition or its value. Any areas, measurements or distances are approximate. The text, photographs and plans are for guidance only. The photographs appearing in these particulars show only certain parts of the property at the time when the photographs were taken. It should not be assumed that the property has all or any of the necessary planning permission, building regulation consent approval or other required consents for its previous, present or future intended usage. Any intending purchasers must satisfy themselves by inspection or by taking appropriate professional advice. Benham and Reeves Ltd has not rested any of the equipment, fittings or facilities.

London | Canary Wharf | City | Colindale | Dartmouth Park | Ealing | Fulham | Hampstead
Hammersmith | Highgate | Hyde Park | Kensington | Kew | Knightsbridge | Nine Elms
Surrey Quays | Shoreditch | Wembley | Wapping | White City | Woolwich

International | China | Hong Kong | India | Israel | Malaysia | Middle East | Pakistan
Singapore | South Africa | Turkey

