



South Bank Tower, Upper Ground, Southwark, SE1

Asking Price: £830,000



South Bank Tower, Upper Ground, Southwark, SE1

 1 Bedroom  1 Bathroom  Leasehold

Situated on the 16th floor of a striking landmark tower on London's vibrant Southbank, this beautifully proportioned one-bedroom apartment offers an exceptional blend of style, comfort, and panoramic city living.

Bathed in natural light from expansive floor-to-ceiling windows, the apartment showcases sweeping views across London's iconic skyline. The thoughtfully designed open-plan layout creates a seamless flow between living, dining, and kitchen areas, finished to a high contemporary standard, perfect for both relaxed living and effortless entertaining.

Residents benefit from an outstanding collection of premium amenities, including a 24-hour concierge, a spectacular rooftop garden with far-reaching views, a fully equipped gym, a 20-metre swimming pool, sauna, and a private cinema room, delivering a true luxury lifestyle experience.

The property would be an ideal pied-a-terre or stylish city home in one of London's most dynamic and sought-after locations.





Property Features:

- One Bedroom
- Bathroom
- Modern Open-Plan Living
- 24-hour Concierge
- 20 Metre Swimming Pool
- Gym
- Rooftop Garden
- Southbank Area

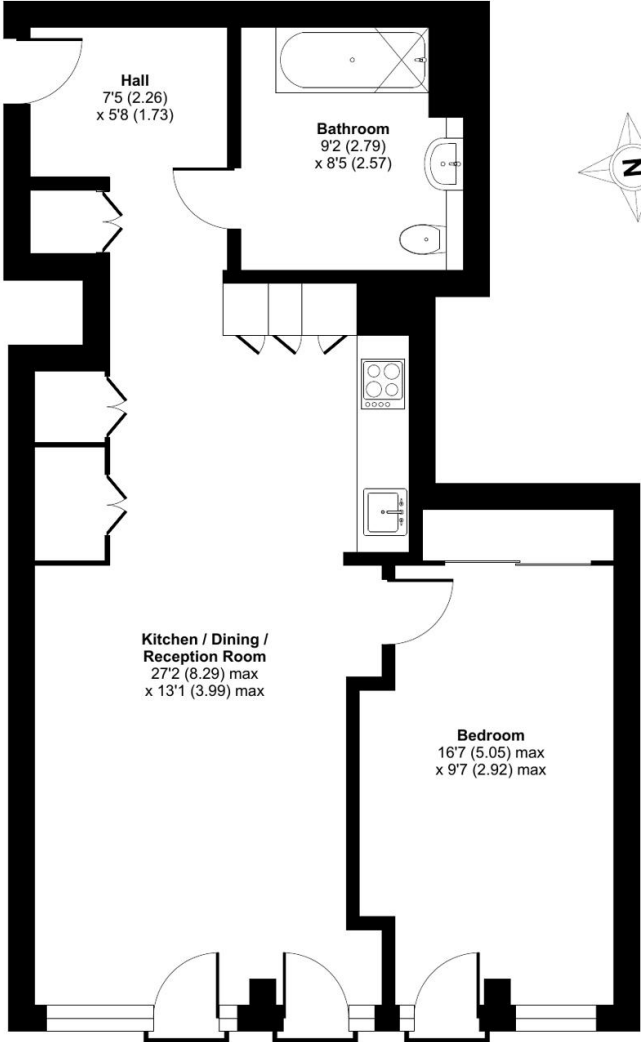


South Bank Tower, Upper Ground, Southwark, SE1



South Bank Tower, SE1

Approximate Area = 672 sq ft / 62.4 sq m
For identification only - Not to scale



SIXTEENTH FLOOR

Score	Energy rating	Current	Potential
92+	A		
81-91	B		
69-80	C	79 C	79 C
55-68	D		
39-54	E		
21-38	F		
1-20	G		

Terms & Conditions:

These particulars are for guidance purposes only and do not form part of an offer or contract.

Asking Price:	£830,000
Tenure:	Leasehold Expires 20/12/3013 Approximately 987 Years Remaining
Ground Rent:	£600.00 (per annum) For the year 2026
Service Charge:	£9,768.44 (per annum) For the year 2026
Anticipated Rent:	£3,200.00 pcm Approx. 4.4% Yield

Viewings:

All viewings are by appointment only through our City Office.

Our reference: CWH240120

T: 020 7213 9700

E: city.sales@benhams.com

W: www.benhams.com

Disclaimer: These particulars are for guidance purposes only and do not form part of an offer or contract. Whilst care has been taken in their preparation, Benham and Reeves or the vendor shall not be held responsible for any inaccuracies. You should not rely on statements by Benham and Reeves Ltd in the particulars or by word of mouth or in writing as being factually accurate about the property, its condition or its value. Any areas, measurements or distances are approximate. The text, photographs and plans are for guidance only. The photographs appearing in these particulars show only certain parts of the property at the time when the photographs were taken. It should not be assumed that the property has all or any of the necessary planning permission, building regulation consent approval or other required consents for its previous, present or future intended usage. Any intending purchasers must satisfy themselves by inspection or by taking appropriate professional advice. Benham and Reeves Ltd has not rested any of the equipment, fittings or facilities.

London | Canary Wharf | City | Colindale | Dartmouth Park | Ealing | Fulham | Hampstead
Hammersmith | Highgate | Hyde Park | Kensington | Kew | Knightsbridge | Nine Elms
Surrey Quays | Shoreditch | Wembley | Wapping | White City | Woolwich

International | China | Hong Kong | India | Israel | Malaysia | Middle East | Pakistan
Singapore | South Africa | Turkey

