



**Bickerton Road, St John's Grove Conservation Area, N19**

Asking Price: £480,000

**Benham  
& Reeves**

# Bickerton Road, St John's Grove Conservation Area, N19

 1 Bedroom     1 Bathroom     Share of Freehold

A well-presented one bedroom apartment with allocated off-street parking, arranged over the entire first floor of this period conversion situated within the desirable St John's Grove Conservation Area.

This spacious property comprises a striking reception room with feature fireplace and floor-to-ceiling bay windows, a fitted open plan kitchen, rear double bedroom with fitted wardrobes and a tiled bathroom with a window.

Bickerton Road is a peaceful residential turning linking Dartmouth Park Hill and Junction Road. The property is perfectly placed for access to the excellent mix of independent retailers and high street brands along Fortess Road, Junction Road and Holloway Road. Archway underground station (Northern Line) and the rolling acres of Hampstead Heath are within easy reach, as are a wide range of local schools, including Hargrave Park, Brookfield, St Joseph's and St John's.





## Property Features:

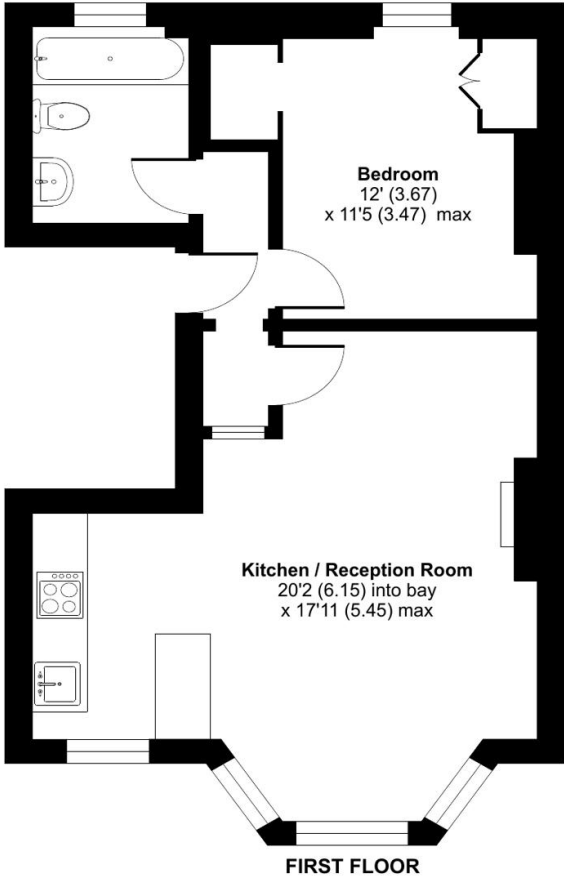
- Double Bedroom
- Bathroom
- Reception Room
- Open Plan Kitchen
- Allocated Off-Street Parking

# Bickerton Road, St John's Grove Conservation Area, N19



## Bickerton Road, London, N19

Approximate Area = 479 sq ft / 44.5 sq m  
 For identification only - Not to scale



Score	Energy rating	Current	Potential
92+	A		
81-91	B		
69-80	C		77 C
55-68	D	59 D	
39-54	E		
21-38	F		
1-20	G		

## Terms & Conditions:

These particulars are for guidance purposes only and do not form part of an offer or contract.

Asking Price: £480,000

Tenure: Share of Freehold  
Expires 01/01/3015  
Approximately 988 Years Remaining

Ground Rent: To be confirmed

Service Charge: To be confirmed

## Viewings:

All viewings are by appointment only through our Dartmouth Park Office.

Our reference: DMP250696

T: 020 7319 9660

E: [dartmouthpark.sales@benhams.com](mailto:dartmouthpark.sales@benhams.com)

W: [www.benhams.com](http://www.benhams.com)

Disclaimer: These particulars are for guidance purposes only and do not form part of an offer or contract. Whilst care has been taken in their preparation, Benham and Reeves or the vendor shall not be held responsible for any inaccuracies. You should not rely on statements by Benham and Reeves Ltd in the particulars or by word of mouth or in writing as being factually accurate about the property, its condition or its value. Any areas, measurements or distances are approximate. The text, photographs and plans are for guidance only. The photographs appearing in these particulars show only certain parts of the property at the time when the photographs were taken. It should not be assumed that the property has all or any of the necessary planning permission, building regulation consent approval or other required consents for its previous, present or future intended usage. Any intending purchasers must satisfy themselves by inspection or by taking appropriate professional advice. Benham and Reeves Ltd has not rested any of the equipment, fittings or facilities.

London | Canary Wharf | City | Colindale | Dartmouth Park | Ealing | Fulham | Hampstead  
Hammersmith | Highgate | Hyde Park | Kensington | Kew | Knightsbridge | Nine Elms  
Surrey Quays | Shoreditch | Wembley | Wapping | White City | Woolwich

International | China | Hong Kong | India | Israel | Malaysia | Middle East | Pakistan  
Singapore | South Africa | Turkey

