



Howard Road, Stanmore, Harrow, HA7

Price Reduced to: £308,000

 Benham
& Reeves

Howard Road, Stanmore, Harrow, HA7

 1 Bedroom (s)  1 Bathroom (s)  Leasehold

Modern one bedroom third floor apartment in the desirable Stanmore Place development and is spanning an approximate 550 square feet. This apartment boasts large open plan living space, fitted kitchen with integrated appliances and a double bedroom with built-in storage and a three-piece luxury finished bathroom with power shower.

The apartment comprises wood flooring in the living area which leads out to a private balcony, fully carpeted bedroom, and sought-after communal garden for residents.

Stanmore Place offers residents secure video entry from the apartment including 24-hour high level security throughout the development, lift access, landscaped gardens, 24-hour concierge service, residents' gym, parking facilities and excellent links to Central London via Canons Park Station which is on the Jubilee line and offers night tube

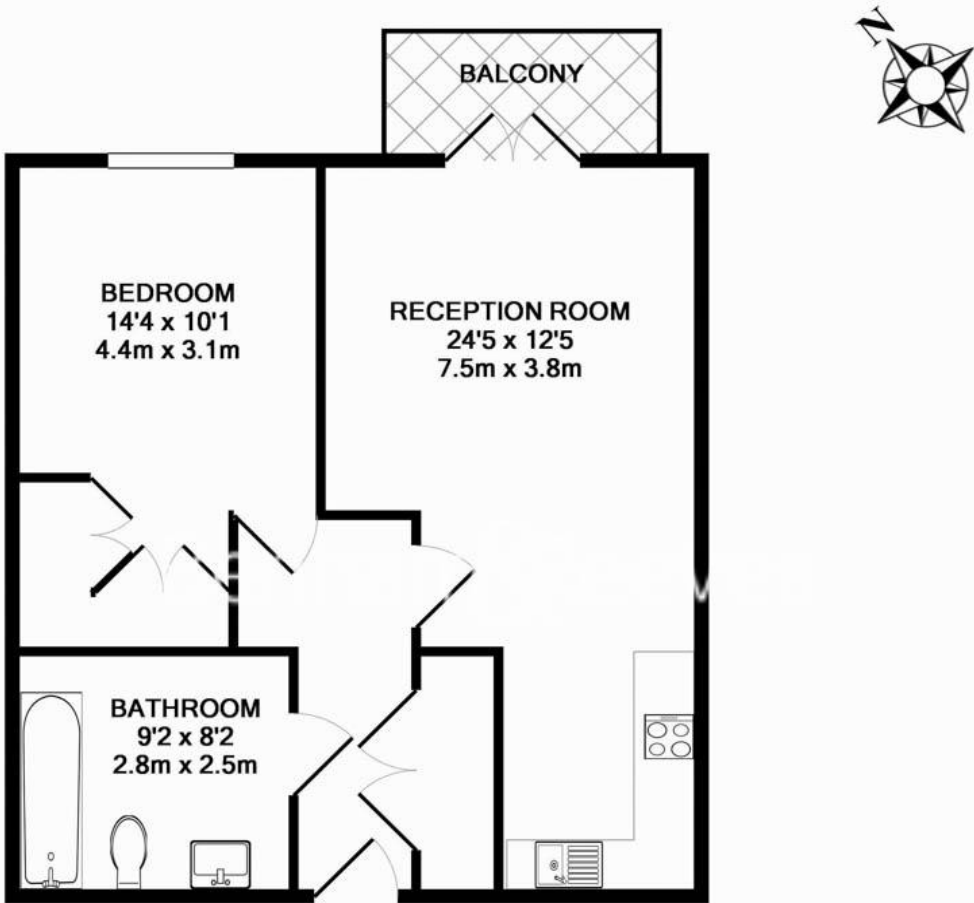




Property Features:

- Stylish One Bedroom Apartment
- One Bathroom
- 550 Square Feet (Approx.)
- Third Floor
- Private Balcony
- 24-Hour Concierge & Resident's Gym
- Canons Park Station (Zone 5)
- Chain Free





00363-18CC.HA7 - 3RD FLOOR
TOTAL APPROX. FLOOR AREA 550 SQ.FT. (51.1 SQ.M.)

Whilst every attempt has been made to ensure the accuracy of the floor plan contained here, measurements of doors, windows, rooms and any other items are approximate and no responsibility is taken for any error, omission, or mis-statement. This plan is for illustrative purposes only and should be used as such by any prospective purchaser. The services, systems and appliances shown have not been tested and no guarantee as to their operability or efficiency can be given
Made with Metropix ©2016

Energy Efficiency Rating		
	Current	Potential
Very energy efficient - lower running costs		
(92+) A		
(81-91) B	83	83
(69-80) C		
(55-68) D		
(39-54) E		
(21-38) F		
(1-20) G		
Not energy efficient - higher running costs		
England, Scotland & Wales	EU Directive 2002/91/EC	

Terms & Conditions:

These particulars are for guidance purposes only and do not form part of an offer or contract.

Price Reduced to:	£308,000
Tenure:	Leasehold Expires 31/12/3007 Approximately 982 Years Remaining
Ground Rent:	£543.74 (per annum) For the year of 2025
Service Charge:	£3,004.48 approx. (per annum) For the year of 2025
Anticipated Rent:	£1,567.00 pcm Approx. 6.1% Yield

Viewings:

All viewings are by appointment only through our Beaufort Park Office.

Our reference: CHD240016

T: 020 8732 7980
E: beaufortpark.sales@benhams.com
W: www.benhams.com

Disclaimer: These particulars are for guidance purposes only and do not form part of an offer or contract. Whilst care has been taken in their preparation, Benham and Reeves or the vendor shall not be held responsible for any inaccuracies. You should not rely on statements by Benham and Reeves Ltd in the particulars or by word of mouth or in writing as being factually accurate about the property, its condition or its value. Any areas, measurements or distances are approximate. The text, photographs and plans are for guidance only. The photographs appearing in these particulars show only certain parts of the property at the time when the photographs were taken. It should not be assumed that the property has all or any of the necessary planning permission, building regulation consent approval or other required consents for it previous, present or future intended usage. Any intending purchasers must satisfy themselves by inspection or by taking appropriate professional advice. Benham and Reeves Ltd has not rested any of the equipment, fittings or facilities.

London | Canary Wharf | City | Colindale | Dartmouth Park | Ealing | Fulham | Hampstead
Hammersmith | Highgate | Hyde Park | Kensington | Kew | Knightsbridge | Nine Elms
Surrey Quays | Shoreditch | Wembley | Wapping | White City | Woolwich

International | China | Hong Kong | India | Israel | Malaysia | Middle East | Pakistan
Singapore | South Africa | Turkey

