



Danestone Court, Commercial Road, Whitechapel, E1

Asking Price: £500,000



Danestone Court, Commercial Road, Whitechapel, E1

 1 Bedroom  1 Bathroom  Leasehold

This stylish one-bedroom apartment offers modern living in the heart of Aldgate, one of East London's most vibrant areas. The bright, open-plan reception and kitchen feature elegant wooden flooring and crisp white walls, creating a light and airy atmosphere. The kitchen is designed to impress, with high-spec integrated appliances, brushed chrome fixtures, under-cabinet lighting, sleek white satin cabinets, and luxurious white marble worktops.

The generous double bedroom features ample storage and expansive floor-to-ceiling windows that flood the room with natural light. The contemporary bathroom features a pristine three-piece suite, fully tiled walls, and a large mirrored cabinet, combining functionality with style.

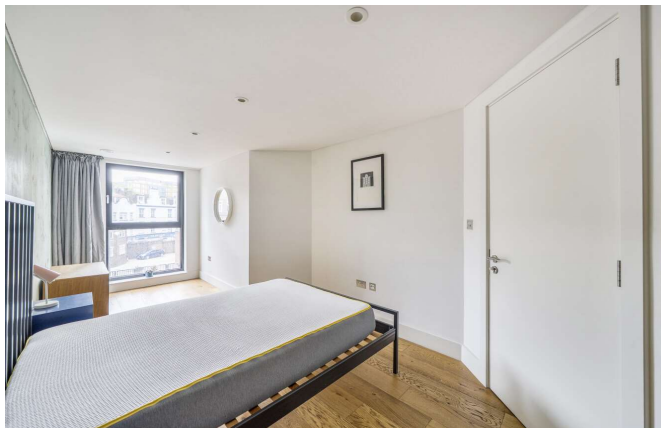
Perfectly positioned for commuters, the property is within walking distance to Aldgate and Aldgate East Underground stations, as well as major rail networks, providing swift access to the City and beyond. Local amenities are on your doorstep, including grocery stores, gyms, modern cafés, and a variety of trendy restaurants, making this an ideal home for city living.





Property Features:

- One Bedroom
- One Bathroom
- Second Floor
- High End Finish
- Chain Free
- An Ideal First Time Buy
- Aldgate Station (Zone 1)

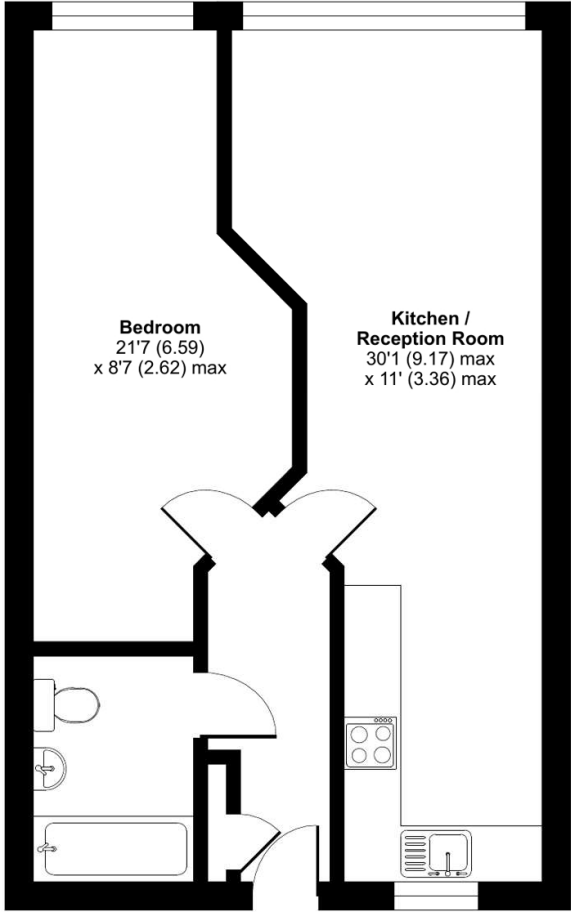


Danestone Court, Commercial Road, Whitechapel, E1



Commercial Road, Whitechapel, E1

Approximate Area = 543 sq ft / 50.4 sq m
For identification only - Not to scale



FIRST FLOOR

Bedroom
21'7 (6.59)
x 8'7 (2.62) max

**Kitchen /
Reception Room**
30'1 (9.17) max
x 11' (3.36) max

Score	Energy rating	Current	Potential
92+	A		
81-91	B	81 B	81 B
69-80	C		
55-68	D		
39-54	E		
21-38	F		
1-20	G		

Terms & Conditions:

These particulars are for guidance purposes only and do not form part of an offer or contract.

Asking Price:	£500,000
Tenure:	Leasehold Expires 01/01/3013 Approximately 986 Years Remaining
Ground Rent:	£350.00 (per annum) for the year 2026
Service Charge:	£1,985.00 (per annum) for the year 2026
Anticipated Rent:	£1,950.00 pcm Approx. 4.7% Yield

Viewings:

All viewings are by appointment only through our City Office.

Our reference: CWH250367

T: 020 7213 9700

E: city.sales@benhams.com

W: www.benhams.com

Disclaimer: These particulars are for guidance purposes only and do not form part of an offer or contract. Whilst care has been taken in their preparation, Benham and Reeves or the vendor shall not be held responsible for any inaccuracies. You should not rely on statements by Benham and Reeves Ltd in the particulars or by word of mouth or in writing as being factually accurate about the property, its condition or its value. Any areas, measurements or distances are approximate. The text, photographs and plans are for guidance only. The photographs appearing in these particulars show only certain parts of the property at the time when the photographs were taken. It should not be assumed that the property has all or any of the necessary planning permission, building regulation consent approval or other required consents for its previous, present or future intended usage. Any intending purchasers must satisfy themselves by inspection or by taking appropriate professional advice. Benham and Reeves Ltd has not rested any of the equipment, fittings or facilities.

London | Canary Wharf | City | Colindale | Dartmouth Park | Ealing | Fulham | Hampstead
Hammersmith | Highgate | Hyde Park | Kensington | Kew | Knightsbridge | Nine Elms
Surrey Quays | Shoreditch | Wembley | Wapping | White City | Woolwich

International | China | Hong Kong | India | Israel | Malaysia | Middle East | Pakistan
Singapore | South Africa | Turkey

