



# Argyll Road, Woolwich, SE18

Price Reduced to: £310,000

Benham  
& Reeves

# Argyll Road, Woolwich, SE18

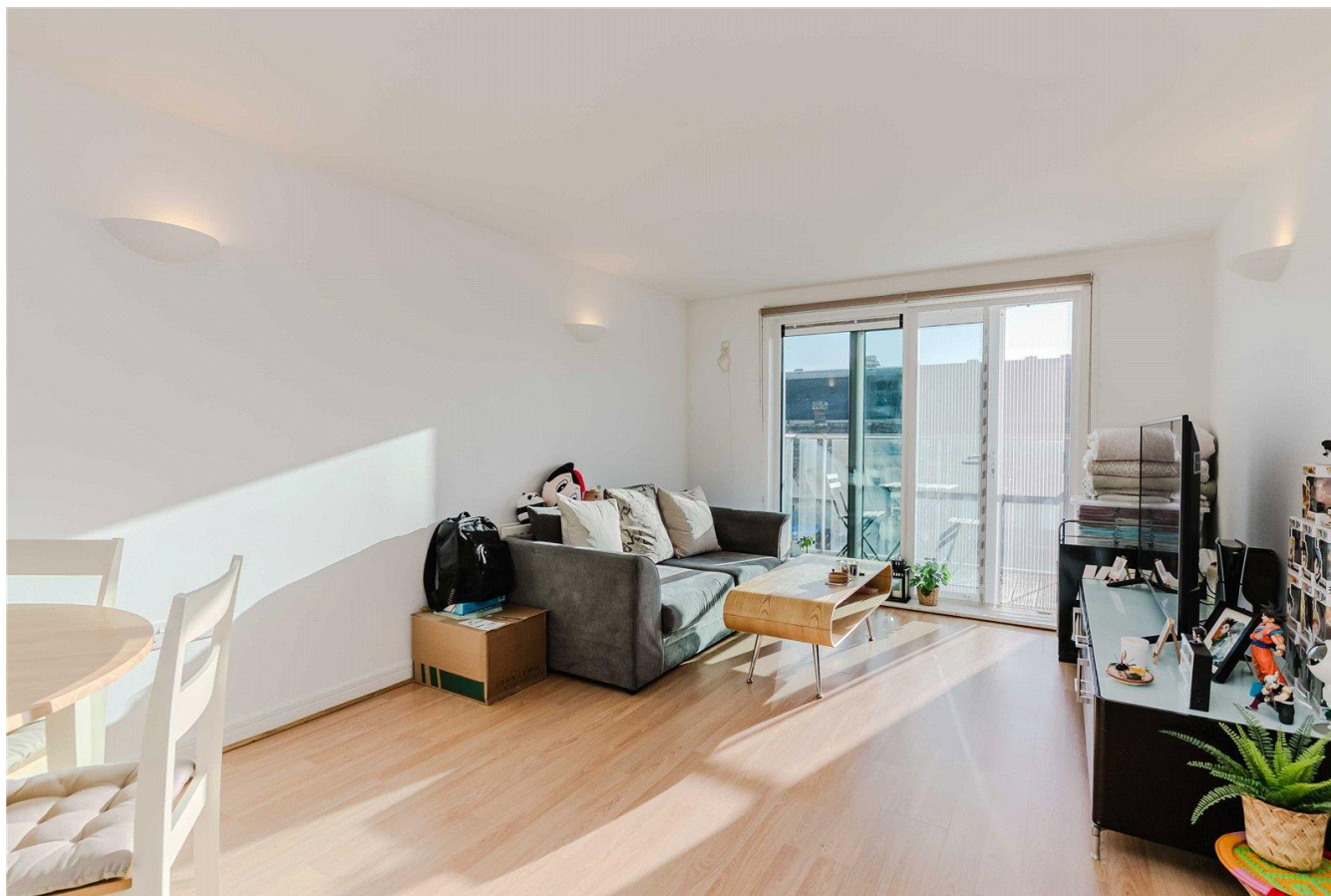
 1 Bedroom     1 Bathroom     Leasehold

This charming double bedroom apartment is located in Building 50, Royal Arsenal Riverside. Situated on the third floor and spanning approximately 479 square feet. At first glance, you are met with a spacious living room and an open-plan kitchen featuring streamlined, integrated appliances. A south-facing balcony perfect for sunlight. A large double bedroom with built-in wardrobes, floor-to-ceiling windows with ample light. A three-piece suite bathroom which includes a shower-bath, floor-to-ceiling tiles, and a heated rack. Additional benefits include storage space and wooden flooring throughout the living area.

Everyday convenience meets riverside living. A lively high street nearby provides a blend of independent and chain shops, restaurants, and health facilities, including a pharmacy and GP. Within Royal Arsenal, residents enjoy two on-site supermarkets, which are Tesco and M&S, cafés, pubs, a bakery, and a fortnightly farmers' market. Exclusive amenities include a residents' gym and 24-hour concierge and security, with the River Thames just a short walk away.

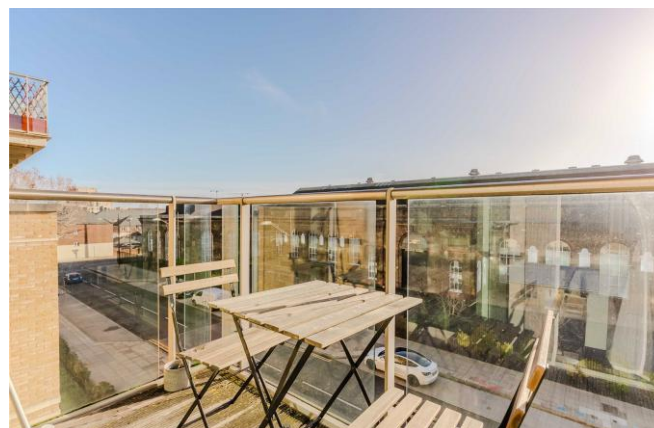
The development is well-connected to the Woolwich Arsenal DLR and the Elizabeth line, offering excellent transport links throughout London.





## Property Features:

- Chain Free
- One Double Bedroom
- 3rd Floor
- 479 Square Feet (Approx.)
- South-Facing Balcony
- Open-Plan Kitchen
- Residents' Gym and 24-Hour Concierge
- Woolwich Overground and DLR Station
- Elizabeth Line



## Third Floor

Total Gross Internal Area  
44.5 Sq/m - 479 Sq/ft



Floor Plan measurements are approximate and are for illustrative purposes only. While we do not doubt the floor plans accuracy, we make no guarantee, warranty or representation as to the accuracy and completeness of the floor plan.

Score	Energy rating	Current	Potential
92+	A		
81-91	B		
69-80	C	77 C	78 C
55-68	D		
39-54	E		
21-38	F		
1-20	G		

## Terms & Conditions:

These particulars are for guidance purposes only and do not form part of an offer or contract.

Price Reduced to: £310,000

Tenure: Leasehold  
Expires 23/01/3000  
Approximately 973 Years Remaining

Ground Rent: £150.00 (per annum)  
to January 2026

Service Charge: £3,000.00 (per annum)  
to March 2026

Anticipated Rent: £1,700.00 pcm  
Approx. 6.6% Yield

## Viewings:

All viewings are by appointment only through our Woolwich Office.

Our reference: WOO250280

T: 020 8051 0700

E: [woolwich.sales@benhams.com](mailto:woolwich.sales@benhams.com)

W: [www.benhams.com](http://www.benhams.com)

Disclaimer: These particulars are for guidance purposes only and do not form part of an offer or contract. Whilst care has been taken in their preparation, Benham and Reeves or the vendor shall not be held responsible for any inaccuracies. You should not rely on statements by Benham and Reeves Ltd in the particulars or by word of mouth or in writing as being factually accurate about the property, its condition or its value. Any areas, measurements or distances are approximate. The text, photographs and plans are for guidance only. The photographs appearing in these particulars show only certain parts of the property at the time when the photographs were taken. It should not be assumed that the property has all or any of the necessary planning permission, building regulation consent approval or other required consents for its previous, present or future intended usage. Any intending purchasers must satisfy themselves by inspection or by taking appropriate professional advice. Benham and Reeves Ltd has not rested any of the equipment, fittings or facilities.

London | Canary Wharf | City | Colindale | Dartmouth Park | Ealing | Fulham | Hampstead  
Hammersmith | Highgate | Hyde Park | Kensington | Kew | Knightsbridge | Nine Elms  
Surrey Quays | Shoreditch | Wembley | Wapping | White City | Woolwich

International | China | Hong Kong | India | Israel | Malaysia | Middle East | Pakistan  
Singapore | South Africa | Turkey

