



## Hennessey Apartments, Brigadier Walk, Woolwich, SE18

Price Reduced to: £499,000

Benham  
& Reeves

# Hennessey Apartments, Brigadier Walk, Woolwich, SE18

 1 Bedroom     1 Bathroom     Leasehold

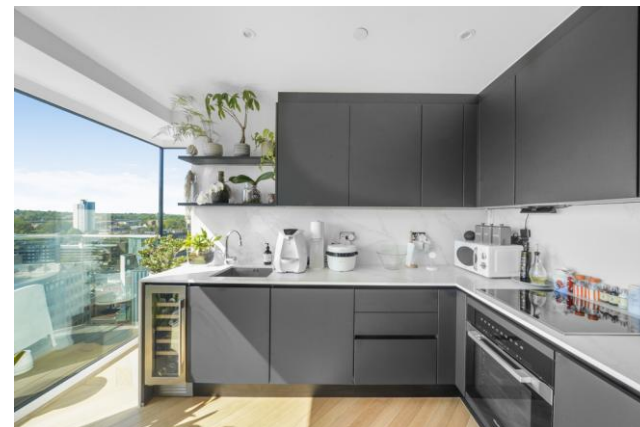
Set within the prestigious Hennessey Apartments at Royal Arsenal Riverside, this impressive penthouse apartment on the twenty-first floor offers elevated city living with refined design, far-reaching views, and a high degree of privacy. With no direct overlooking from neighbouring properties and shielded from street view, the apartment enjoys a rare sense of seclusion.

Spanning approximately 552 square feet, the property features a thoughtfully arranged open-plan living and dining area, complemented by a sleek, fully fitted kitchen with integrated appliances and contemporary, high-spec finishes throughout.

A standout feature is the expansive south-facing balcony, delivering uninterrupted views and an abundance of natural light. The bedroom is well-appointed with fitted wardrobes and excellent natural lighting, while the modern three-piece bathroom suite is finished to a high standard. Additional benefits include ample storage and elegant wooden flooring across the main living space.

Residents of Royal Arsenal Riverside enjoy access to premium on-site amenities, including a fully equipped gym, swimming pool, and concierge service. Ideally located moments from the River Thames, the development is surrounded by convenient local amenities, with Marks & Spencer, Lidl, and a large Tesco all within easy walking distance. A vibrant high street offering a mix of independent and well-known shops, restaurants, and essential health services is also close by.

Superb transport connectivity is provided via nearby Woolwich Arsenal stations, offering Elizabeth line, DLR and National Rail services, ensuring swift access across London

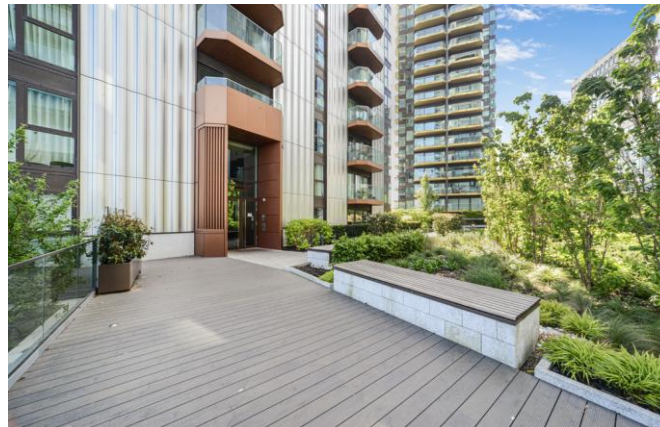


# Hennessey Apartments, Brigadier Walk, Woolwich, SE18



## Property Features:

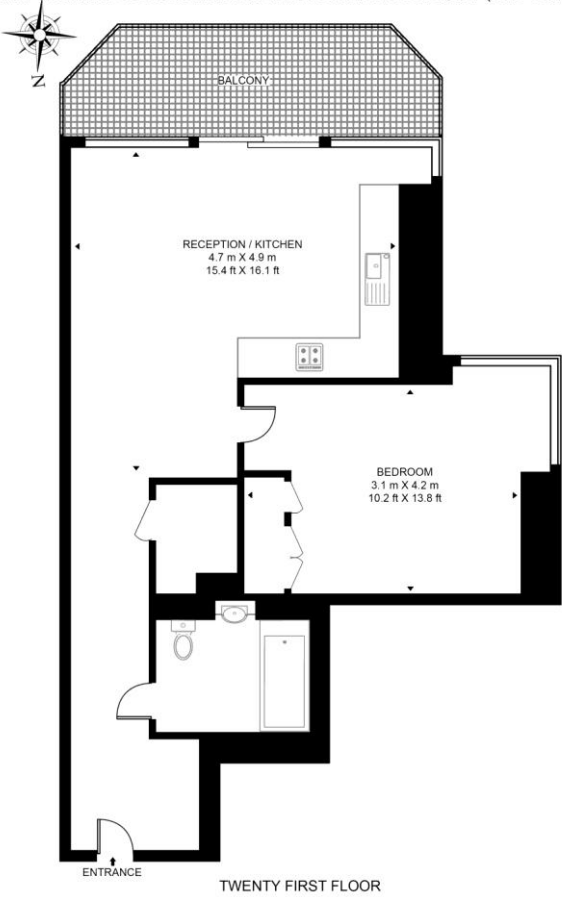
- Penthouse Apartment
- Double Bedroom
- Bathroom
- 21st Floor
- 552 Square Feet (Approx.)
- Open-Plan Kitchen
- South-Facing Balcony
- Cinema and Swimming Pool
- Residents' Gym and 24 Hour Concierge
- Elizabeth Line
- Woolwich National Rail and DLR Station



# Hennessey Apartments, Brigadier Walk, Woolwich, SE18



**HENNESSEY APARTMENTS**  
 APPROXIMATE GROSS INTERNAL FLOOR AREA 552 SQ.FT (51.3 SQ.M)



TWENTY FIRST FLOOR

This floor plan has been defined by the RICS Code of Measurement. This floor plan and all others are for approximate representative purposes only and upon usage is agreed to as such by the client.  
 WWW: hvirtualart.com | TEL: 0203 974.1567 | EMAIL: info@hvirtualart.com

Score	Energy rating	Current	Potential
92+	A		
81-91	B	84 B	84 B
69-80	C		
55-68	D		
39-54	E		
21-38	F		
1-20	G		

# Hennessey Apartments, Brigadier Walk, Woolwich, SE18

## Terms & Conditions:

These particulars are for guidance purposes only and do not form part of an offer or contract.

Price Reduced to:	£499,000
Tenure:	Leasehold Expires 31/12/3020 Approximately 994 Years Remaining
Ground Rent:	£0.00 (per annum) Peppercorn
Service Charge:	£2,644.34 (per annum) for the year 2025
Anticipated Rent:	£2,200.00 pcm Approx. 5.3% Yield

## Viewings:

All viewings are by appointment only through our Woolwich Office.

Our reference: WOO260119

T: 020 8051 0700

E: [woolwich.sales@benhams.com](mailto:woolwich.sales@benhams.com)

W: [www.benhams.com](http://www.benhams.com)

Disclaimer: These particulars are for guidance purposes only and do not form part of an offer or contract. Whilst care has been taken in their preparation, Benham and Reeves or the vendor shall not be held responsible for any inaccuracies. You should not rely on statements by Benham and Reeves Ltd in the particulars or by word of mouth or in writing as being factually accurate about the property, its condition or its value. Any areas, measurements or distances are approximate. The text, photographs and plans are for guidance only. The photographs appearing in these particulars show only certain parts of the property at the time when the photographs were taken. It should not be assumed that the property has all or any of the necessary planning permission, building regulation consent approval or other required consents for its previous, present or future intended usage. Any intending purchasers must satisfy themselves by inspection or by taking appropriate professional advice. Benham and Reeves Ltd has not rested any of the equipment, fittings or facilities.

London | Canary Wharf | City | Colindale | Dartmouth Park | Ealing | Fulham | Hampstead  
Hammersmith | Highgate | Hyde Park | Kensington | Kew | Knightsbridge | Nine Elms  
Surrey Quays | Shoreditch | Wembley | Wapping | White City | Woolwich

International | China | Hong Kong | India | Israel | Malaysia | Middle East | Pakistan  
Singapore | South Africa | Turkey

