



Biscayne Avenue, Canary Wharf, E14

Asking Price: £550,000

 Benham
& Reeves

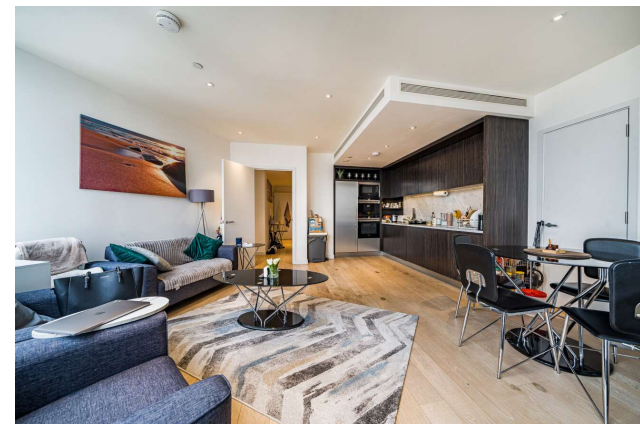
Biscayne Avenue, Canary Wharf, E14

 2 Bedroom (s)  2 Bathroom (s)  Leasehold

This beautifully designed two bedroom, two bathroom apartment located on the eleventh floor of the extremely popular Charrington Tower, Canary Wharf. The open-plan living area is generously sized, comfortably accommodating two sofas and a dining table, with comfort cooling ensuring year-round comfort. North east facing floor-to-ceiling windows and a double-entrance balcony provide lots of natural light and outside space, while the modern kitchen is finished to an exceptional standard, featuring sleek cabinetry, high-quality countertops, Siemens integrated appliances, and a full-size fridge freezer. The spacious bedrooms easily accommodate a full-size double bed, with fitted wardrobes and large windows allowing for plenty of natural light. The elegantly designed bathrooms feature premium tiles, stylish stone finishes, and ample storage space.

The Charrington Tower development offers a premium living experience with residents benefiting from 24-hour security and concierge services, swimming pool, spa, gymnasium, on-site cafés, communal areas, and a dedicated parking space, adding both convenience and luxury to this sought-after development. Located in Blackwall, this apartment enjoys easy access to Canary Wharf's financial district, high-end shopping, fine dining, and entertainment options.

Blackwall DLR Station is just moments away, offering excellent transport links across London.



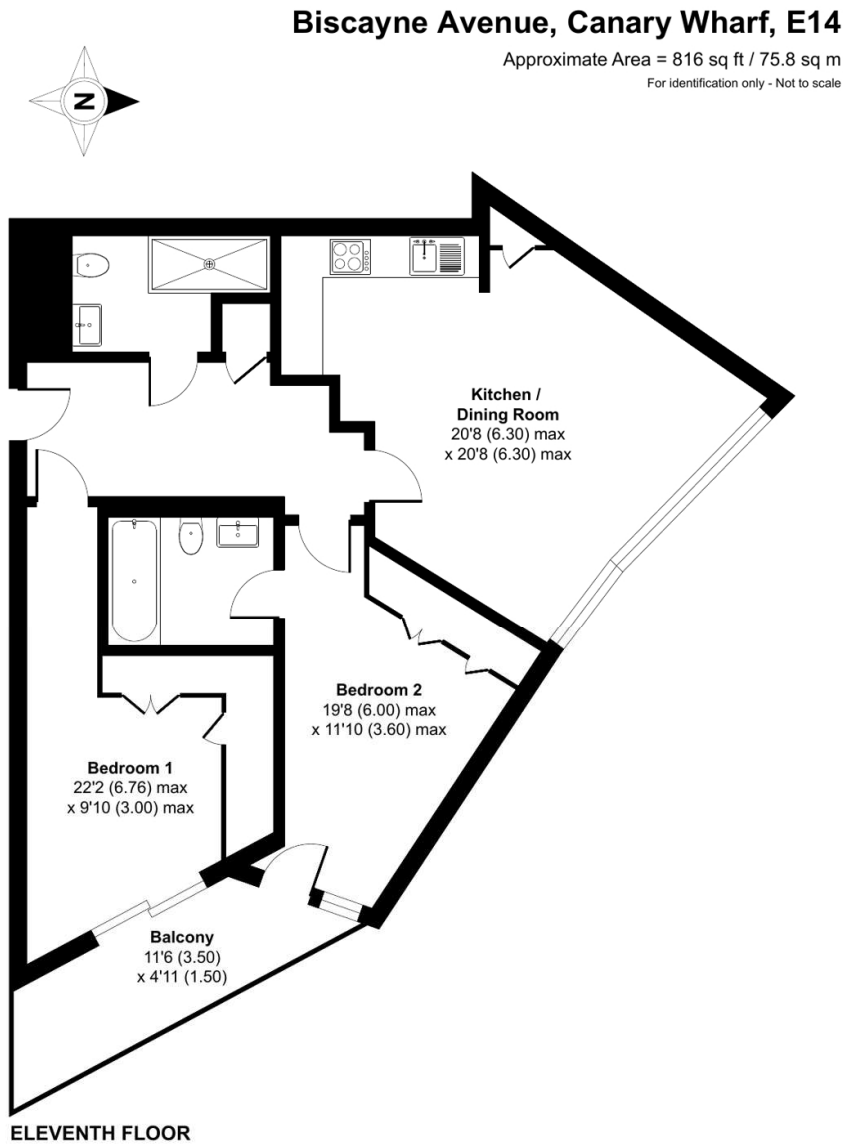


Property Features:

- 2 Bedrooms
- 2 Bathrooms
- 11th Floor
- Balcony
- 816 Square Feet (Approx.)
- 24-Hour Concierge
- Residents' Gymnasium
- Cinema
- Swimming Pool and Spa
- Parking



Biscayne Avenue, Canary Wharf, E14



Energy Efficiency Rating		
	Current	Potential
Very energy efficient - lower running costs		
(92+) A		
(81-91) B	82	82
(69-80) C		
(55-68) D		
(39-54) E		
(21-38) F		
(1-20) G		
Not energy efficient - higher running costs		
England, Scotland & Wales	EU Directive 2002/91/EC	

Terms & Conditions:

These particulars are for guidance purposes only and do not form part of an offer or contract.

Asking Price:	£550,000
Tenure:	Leasehold Expires 31/12/3009 Approximately 984 Years Remaining
Ground Rent:	£800.00 (per annum) for the year 2025
Service Charge:	£9,500.00 (per annum) for the year 2025
Anticipated Rent:	£2,700.00 pcm Approx. 5.9% Yield

Viewings:

All viewings are by appointment only through our Canary Wharf Office.

Our reference: NWH250068

T: 020 8036 3200
E: canarywharf.sales@benhams.com
W: www.benhams.com

Disclaimer: These particulars are for guidance purposes only and do not form part of an offer or contract. Whilst care has been taken in their preparation, Benham and Reeves or the vendor shall not be held responsible for any inaccuracies. You should not rely on statements by Benham and Reeves Ltd in the particulars or by word of mouth or in writing as being factually accurate about the property, its condition or its value. Any areas, measurements or distances are approximate. The text, photographs and plans are for guidance only. The photographs appearing in these particulars show only certain parts of the property at the time when the photographs were taken. It should not be assumed that the property has all or any of the necessary planning permission, building regulation consent approval or other required consents for it previous, present or future intended usage. Any intending purchasers must satisfy themselves by inspection or by taking appropriate professional advice. Benham and Reeves Ltd has not rested any of the equipment, fittings or facilities.

London | Canary Wharf | City | Colindale | Dartmouth Park | Ealing | Fulham | Hampstead
Hammersmith | Highgate | Hyde Park | Kensington | Kew | Knightsbridge | Nine Elms
Surrey Quays | Shoreditch | Wembley | Wapping | White City | Woolwich

International | China | Hong Kong | India | Israel | Malaysia | Middle East | Pakistan
Singapore | South Africa | Turkey

