



## Landmark East Tower, Marsh Wall, Canary Wharf, E14

Asking Price: £625,000

 Benham  
& Reeves

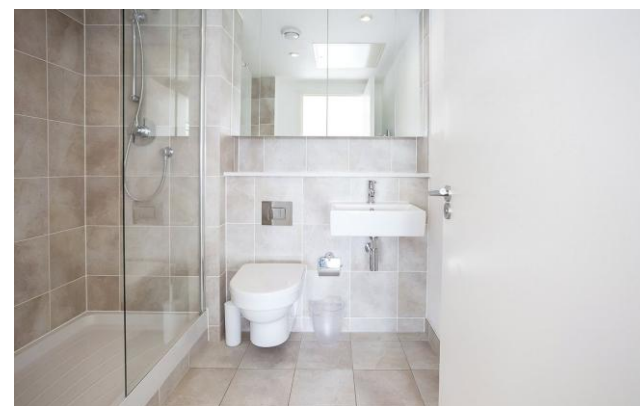
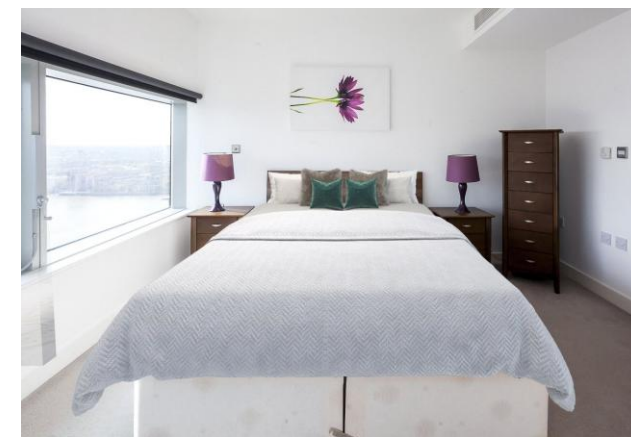
# Landmark East Tower, Marsh Wall, Canary Wharf, E14

 2 Bedroom (s)  2 Bathroom (s)  Leasehold

This modern apartment is set on the 27th floor of the Landmark East Tower, Marsh Wall in Canary Wharf, a modern development with excellent views towards Central London and direct river views.

The property consists of two double bedrooms both with built in storage, the principal bedroom also benefits from an en-suite shower room and both bedrooms benefit from underfloor heating. The bathrooms have been finished to a high standard. The open plan living room is bright and spacious with large windows and access onto a balcony with views towards the City, an ideal place to relax in the evening. The kitchen is fully fitted with dishwasher, microwave and fridge/freezer and a good storage space in the hallway.

The Landmark benefits from 24-hour concierge service as well as a residents' gym. Ideally situated within walking distance of Canary Wharf this property is ideal for professionals working in Canary Wharf and the City with excellent transport links and good shopping, eating and entertainment facilities all on your doorstep.



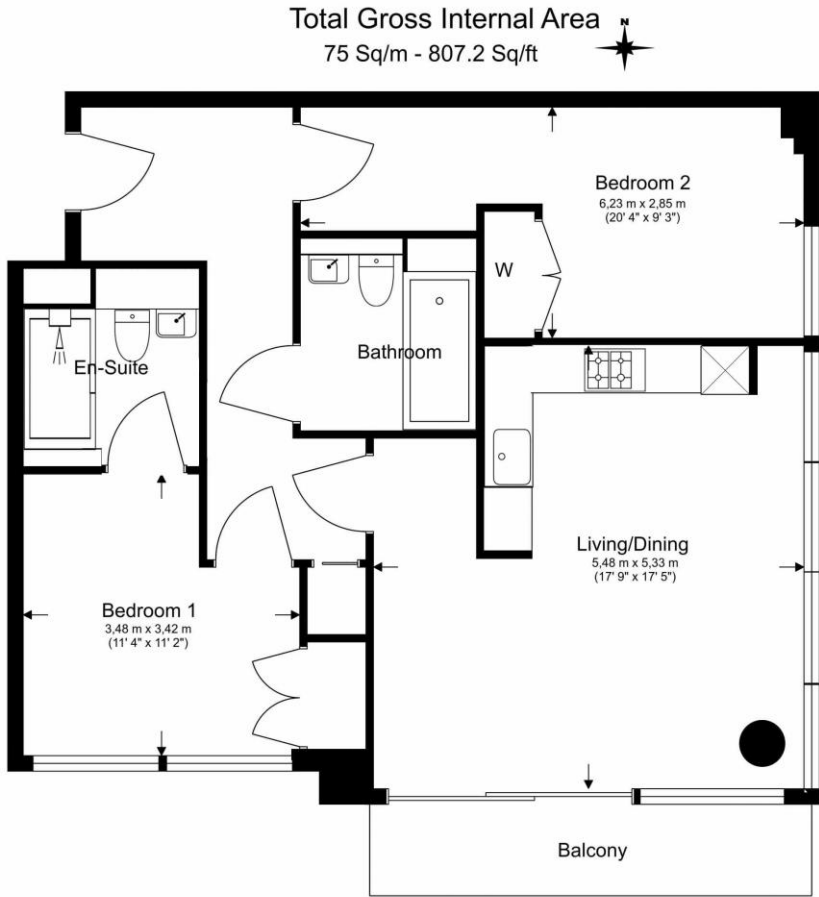


## Property Features:

- 2 Bedrooms
- 2 Bathrooms
- 27th Floor
- 807 Square Feet (Approx.)
- Balcony
- 24 Hour Concierge Service
- Residential Gym
- Canary Wharf Underground (Zone 2)
- South Quay DLR Station (Zone 2)



# Landmark East Tower, Marsh Wall, Canary Wharf, E14



Floor Plan measurements are approximate and are for illustrative purposes only. While we do not doubt the floor plans accuracy, we make no guarantee, warranty or representation as to the accuracy and completeness of the floor plan.

Energy Efficiency Rating		
	Current	Potential
Very energy efficient - lower running costs		
(92+) <b>A</b>		
(81-91) <b>B</b>	83	83
(69-80) <b>C</b>		
(55-68) <b>D</b>		
(39-54) <b>E</b>		
(21-38) <b>F</b>		
(1-20) <b>G</b>		
Not energy efficient - higher running costs		
England, Scotland & Wales	EU Directive 2002/91/EC	

## Terms & Conditions:

These particulars are for guidance purposes only and do not form part of an offer or contract.

Asking Price:	£625,000
Tenure:	Leasehold Expires 31/12/3007 Approximately 981 Years Remaining
Ground Rent:	£750.00 (per annum) For the year 2026
Service Charge:	£7,739.00 approx. (per annum) From 01.07.2025 to 30.06.2026
Anticipated Rent:	£2,950.00 pcm Approx. 5.5% Yield

## Viewings:

All viewings are by appointment only through our Canary Wharf Office.

Our reference: CWH220129

T: 020 8036 3200

E: [canarywharf.sales@benhams.com](mailto:canarywharf.sales@benhams.com)

W: [www.benhams.com](http://www.benhams.com)

Disclaimer: These particulars are for guidance purposes only and do not form part of an offer or contract. Whilst care has been taken in their preparation, Benham and Reeves or the vendor shall not be held responsible for any inaccuracies. You should not rely on statements by Benham and Reeves Ltd in the particulars or by word of mouth or in writing as being factually accurate about the property, its condition or its value. Any areas, measurements or distances are approximate. The text, photographs and plans are for guidance only. The photographs appearing in these particulars show only certain parts of the property at the time when the photographs were taken. It should not be assumed that the property has all or any of the necessary planning permission, building regulation consent approval or other required consents for its previous, present or future intended usage. Any intending purchasers must satisfy themselves by inspection or by taking appropriate professional advice. Benham and Reeves Ltd has not rested any of the equipment, fittings or facilities.

London | Canary Wharf | City | Colindale | Dartmouth Park | Ealing | Fulham | Hampstead  
Hammersmith | Highgate | Hyde Park | Kensington | Kew | Knightsbridge | Nine Elms  
Surrey Quays | Shoreditch | Wembley | Wapping | White City | Woolwich

International | China | Hong Kong | India | Israel | Malaysia | Middle East | Pakistan  
Singapore | South Africa | Turkey

