



Signal House, Seager Place, Deptford, SE8

Asking Price: £535,000

 Benham
& Reeves

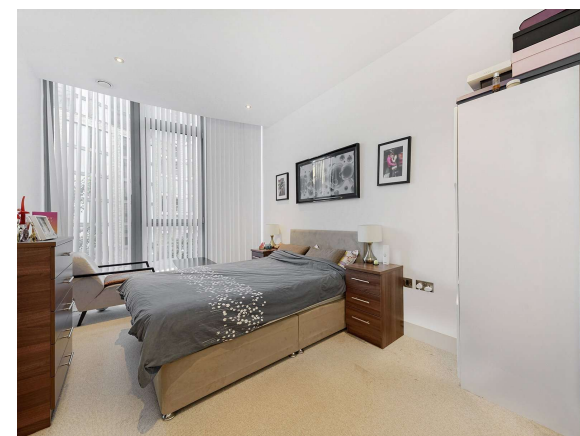
Signal House, Seager Place, Deptford, SE8

 2 Bedroom (s)  2 Bathroom (s)  Leasehold

Presenting a well-appointed three bedroom, two bathroom apartment offering approximately 1,006 square feet of living space, complete with the added benefit of secure, allocated underground parking.

Situated on the first floor, the apartment features a spacious open-plan reception and kitchen area, perfectly suited for both entertaining and everyday living. The property comprises three generously sized bedrooms, including a principal bedroom with its own en-suite bathroom, providing comfortable and versatile accommodation throughout.

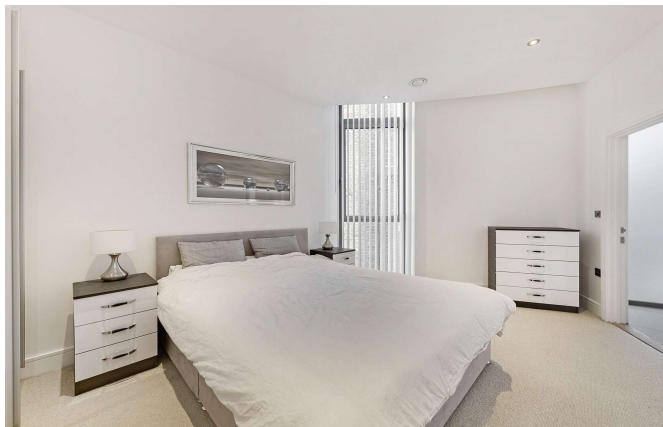
Commuters will appreciate the convenient distance to Deptford Bridge DLR, providing excellent links across London. Mainline stations at St. John's, Deptford, Greenwich, and New Cross are all within easy reach, along with Overground services and direct night bus routes, making late-night journeys home straightforward. Connections to London's airports are also quick and convenient.





Property Features:

- Three Bedrooms
- Two Bathrooms
- First Floor
- 1006 Square Feet (Approx.)
- Chain Free
- Concierge
- Deptford Bridge Station (0.1 miles)



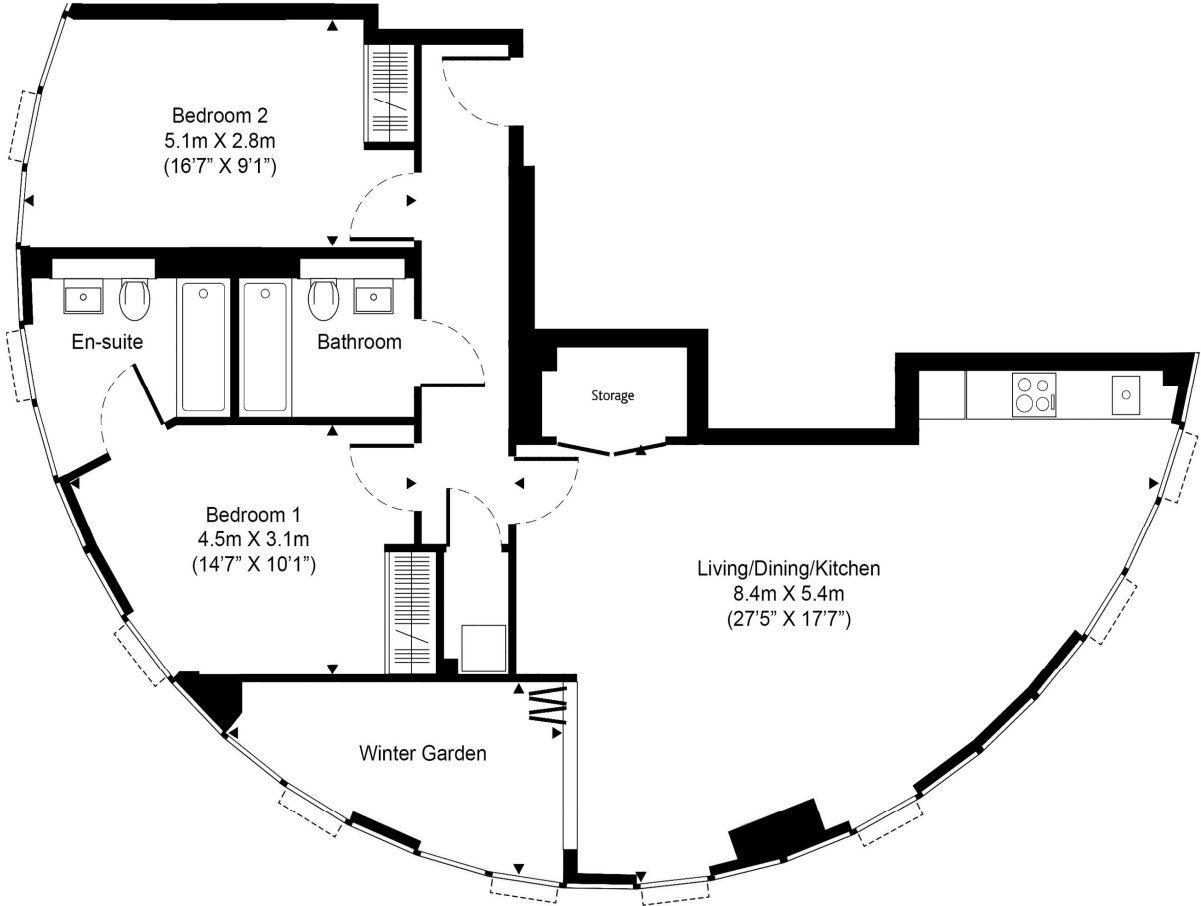
Signal House, Seager Place, Deptford, SE8



Total Gross Internal Area

93.5 Sq/m - 1,006 Sq/ft

(The measurements are not ours but those of the Developer)



| Score | Energy rating | Current | Potential |
|-------|---------------|---------|-----------|
| 92+ | A | | |
| 81-91 | B | | |
| 69-80 | C | | 77 C |
| 55-68 | D | 59 D | |
| 39-54 | E | | |
| 21-38 | F | | |
| 1-20 | G | | |



Floor Plan measurements are approximate and are for illustrative purposes only. While we do not doubt the floor plans accuracy, we make no guarantee, warranty or representation as to the accuracy and completeness of the floor plan.

Terms & Conditions:

These particulars are for guidance purposes only and do not form part of an offer or contract.

| | |
|-------------------|--|
| Asking Price: | £535,000 |
| Tenure: | Leasehold Expires 31/12/3005 Approximately 979 Years Remaining |
| Ground Rent: | £350.00 (per annum) Next Review: 2031 |
| Service Charge: | £5,500.00 (per annum) for the year 2026 |
| Anticipated Rent: | £2,820.00 pcm Approx. 6.3% Yield |

Viewings:

All viewings are by appointment only through our Surrey Quays Office.

Our reference: KEN250165

T: 020 7740 3050

E: surreyquays.sales@benhams.com

W: www.benhams.com

Disclaimer: These particulars are for guidance purposes only and do not form part of an offer or contract. Whilst care has been taken in their preparation, Benham and Reeves or the vendor shall not be held responsible for any inaccuracies. You should not rely on statements by Benham and Reeves Ltd in the particulars or by word of mouth or in writing as being factually accurate about the property, its condition or its value. Any areas, measurements or distances are approximate. The text, photographs and plans are for guidance only. The photographs appearing in these particulars show only certain parts of the property at the time when the photographs were taken. It should not be assumed that the property has all or any of the necessary planning permission, building regulation consent approval or other required consents for its previous, present or future intended usage. Any intending purchasers must satisfy themselves by inspection or by taking appropriate professional advice. Benham and Reeves Ltd has not rested any of the equipment, fittings or facilities.

London | Canary Wharf | City | Colindale | Dartmouth Park | Ealing | Fulham | Hampstead
Hammersmith | Highgate | Hyde Park | Kensington | Kew | Knightsbridge | Nine Elms
Surrey Quays | Shoreditch | Wembley | Wapping | White City | Woolwich

International | China | Hong Kong | India | Israel | Malaysia | Middle East | Pakistan
Singapore | South Africa | Turkey

