



Chelsea Vista, The Boulevard, Imperial Wharf, SW6

Asking Price: £765,000

 Benham
& Reeves

Chelsea Vista, The Boulevard, Imperial Wharf, SW6

 2 Bedroom (s)  2 Bathroom (s)  Leasehold

A modern and contemporary two bedroom apartment located on the fourth floor of Chelsea Vista, Imperial Wharf. Spanning an approximate 973 square feet, with private balcony, this apartment comprises a bright and spacious living/dining area and a stylish fitted kitchen with integrated appliances such as hob, oven, and built-in microwave. This well-presented apartment offers two generously sized bedrooms. The main bedroom includes walk-in wardrobe, en-suite shower room and carpeted floor. This property also includes a tiled three-piece family bathroom, video-entry phone system, extra storage/utility cupboard, comfort cooling and wooden flooring.

Located on the north bank of the River Thames in SW6 adjacent to Chelsea Harbour, Imperial Wharf is a luxury riverside complex by developers St George with on-site amenities including 24 hour concierge, a residents' gymnasium, Tesco, landscaped gardens and a range of cafes and restaurants. A real local community and all the amenities you could wish for, all set within walking distance of the fabulous King's Road, which provides a variety of cuisines, cafes, bars and boutiques.

The Imperial Wharf rail station is 0.1 miles away and provides quick links to Clapham Junction, Shepherd's Bush (for the Central line and Westfield shopping centre) and Fulham Broadway (District line).

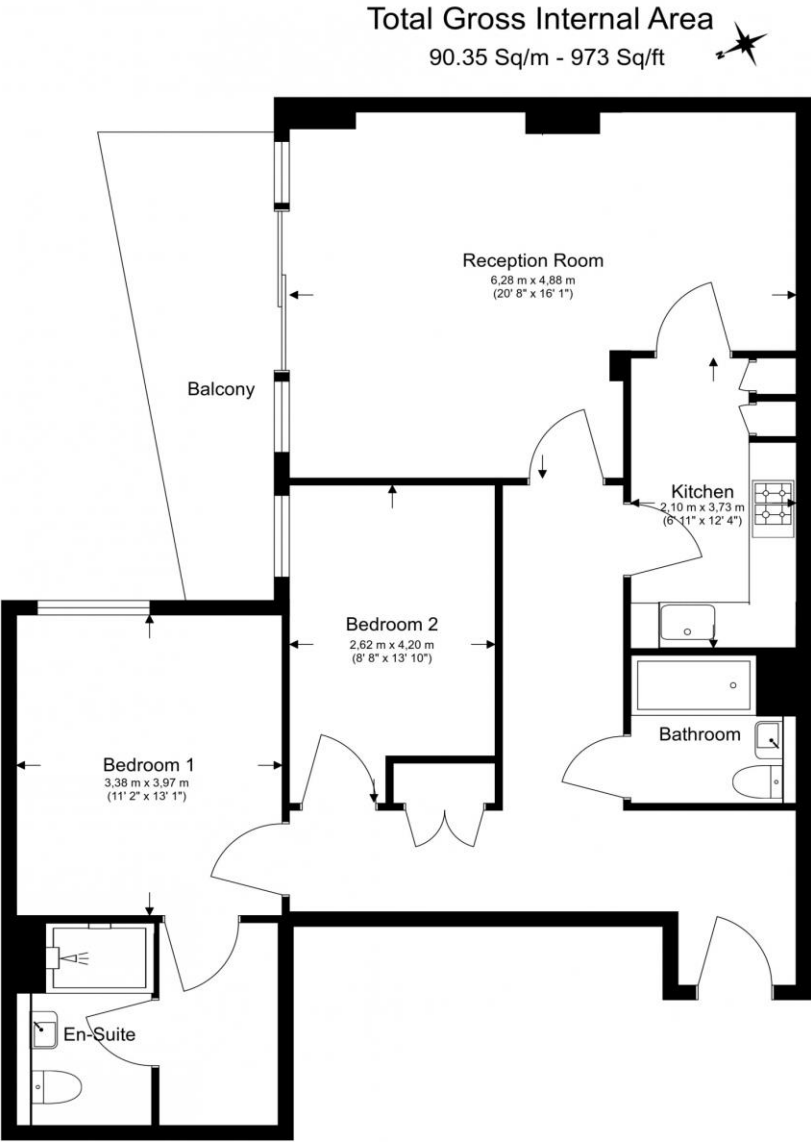




Property Features:

- Two Bedrooms
- Two Bathrooms
- Fourth Floor
- 973 Square Feet (Approx.)
- Private Balcony
- 24 Hour Concierge Service
- Resident's Gym
- Imperial Wharf Overground Station (Zone 2)





Floor Plan measurements are approximate and are for illustrative purposes only. While we do not doubt the floor plans accuracy, we make no guarantee, warranty or representation as to the accuracy and completeness of the floor plan.

Energy Efficiency Rating		
	Current	Potential
Very energy efficient - lower running costs		
(92+) A		
(81-91) B		
(69-80) C	76	79
(55-68) D		
(39-54) E		
(21-38) F		
(1-20) G		
Not energy efficient - higher running costs		
England, Scotland & Wales	EU Directive 2002/91/EC	

Terms & Conditions:

These particulars are for guidance purposes only and do not form part of an offer or contract.

Asking Price:	£765,000
Tenure:	Leasehold Expires 15/12/2998 Approximately 975 Years Remaining
Ground Rent:	£250 (per annum) for the year 2023
Service Charge:	£5300 (per annum) for the year 2023
Anticipated Rent:	£3,016 pcm Approx. 4.7 % Yield

Viewings:

All viewings are by appointment only through our Imperial Wharf Office.

Our reference: NIN230109

T: 020 3282 3700

E: imperialwharf.sales@benhams.com

W: www.benhams.com

Disclaimer: These particulars are for guidance purposes only and do not form part of an offer or contract. Whilst care has been taken in their preparation, Benham and Reeves or the vendor shall not be held responsible for any inaccuracies. You should not rely on statements by Benham and Reeves Ltd in the particulars or by word of mouth or in writing as being factually accurate about the property, its condition or its value. Any areas, measurements or distances are approximate. The text, photographs and plans are for guidance only. The photographs appearing in these particulars show only certain parts of the property at the time when the photographs were taken. It should not be assumed that the property has all or any of the necessary planning permission, building regulation consent approval or other required consents for its previous, present or future intended usage. Any intending purchasers must satisfy themselves by inspection or by taking appropriate professional advice. Benham and Reeves Ltd has not rested any of the equipment, fittings or facilities.

London | Canary Wharf | City | Colindale | Dartmouth Park | Ealing | Fulham | Hampstead
Hammersmith | Highgate | Hyde Park | Kensington | Kew | Knightsbridge | Nine Elms
Surrey Quays | Shoreditch | Wembley | Wapping | White City | Woolwich

International | China | Hong Kong | India | Israel | Malaysia | Middle East | Pakistan
Singapore | South Africa | Turkey

