



Watermans Quay, William Morris Way, Imperial Wharf, SW6

Offers in excess of: £750,000

 Benham
& Reeves

Watermans Quay, William Morris Way, Imperial Wharf, SW6

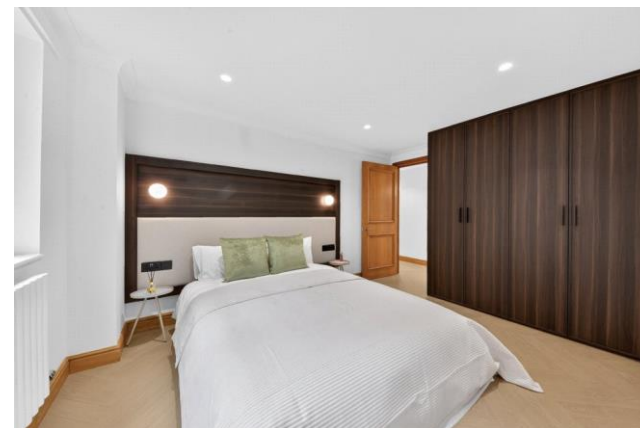
 2 Bedroom (s)  2 Bathroom (s)  Leasehold

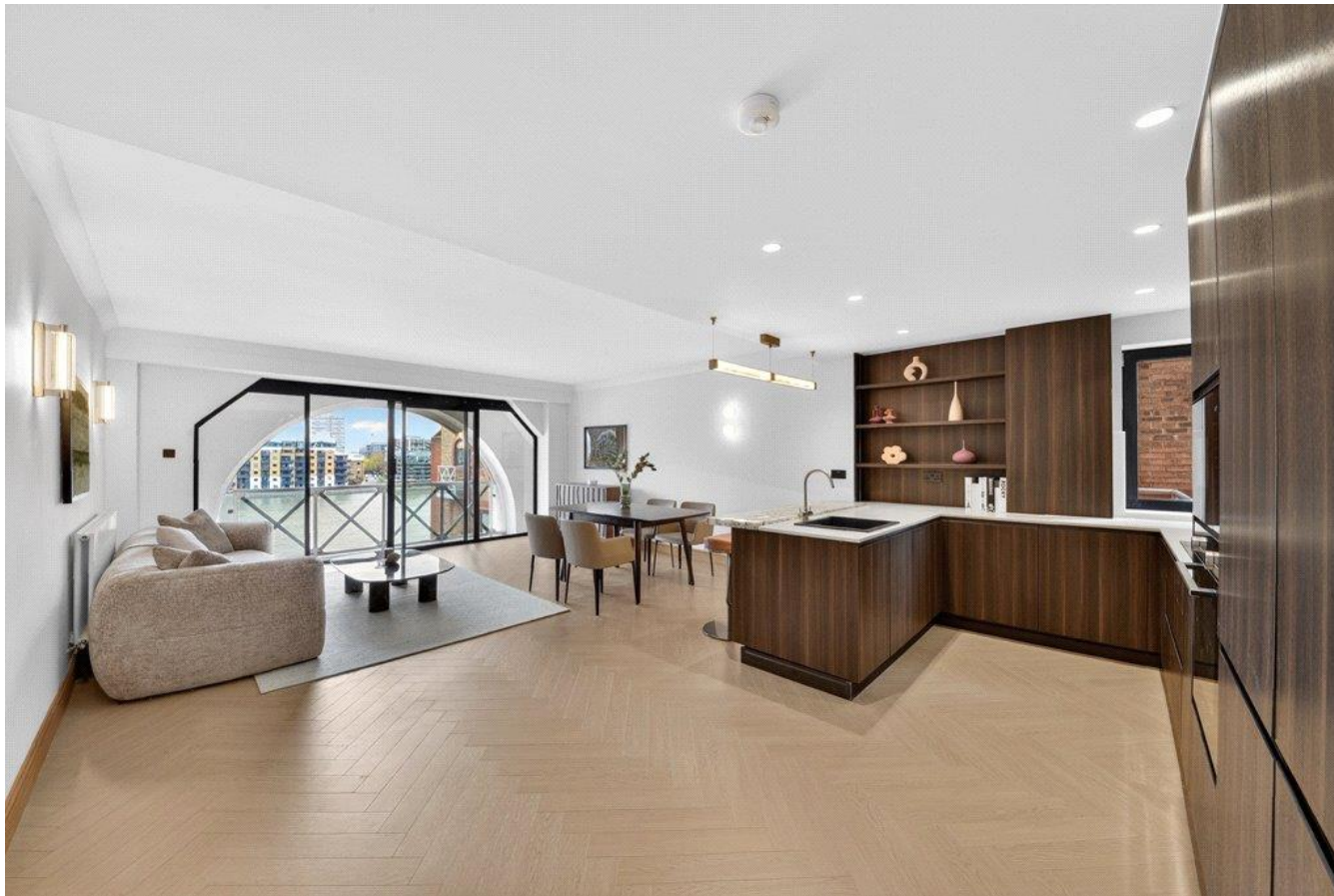
An impeccably refurbished fourth-floor apartment, designed for those with an eye for detail, the home is anchored by a stunning open-plan reception room where natural light pours across elegant hardwood parquet flooring. The kitchen is a masterpiece of design, featuring bespoke cabinets, integrated Siemens appliances, and a solid marble breakfast bar perfect for morning coffee or evening entertaining.

Beyond the glass, a private south-east facing balcony offers a front-row seat to the Thames, providing a serene backdrop to your daily life. Both bedrooms are generous doubles, with the principal suite offering a spa-like retreat complete with a rainfall shower, underfloor heating, and natural stone flooring finishes. With 24-hour concierge service and secure underground parking, this is more than just an apartment; it's a premier riverside lifestyle.

Heating and hot water are included in the service charge.

The development is ideally positioned to enjoy riverside living, with direct access to the river and the Thames Path, where you can enjoy walks along the river. Watermans Quay is ideally located for access to the popular bars, shops and restaurants of the King's Road and Sloane Square. It is also approximately 0.5 miles from Chelsea Harbour Pier and Imperial Wharf Station, both of which offer transport to Central London. For added convenience, there is a large Sainsbury's located within a short walk.

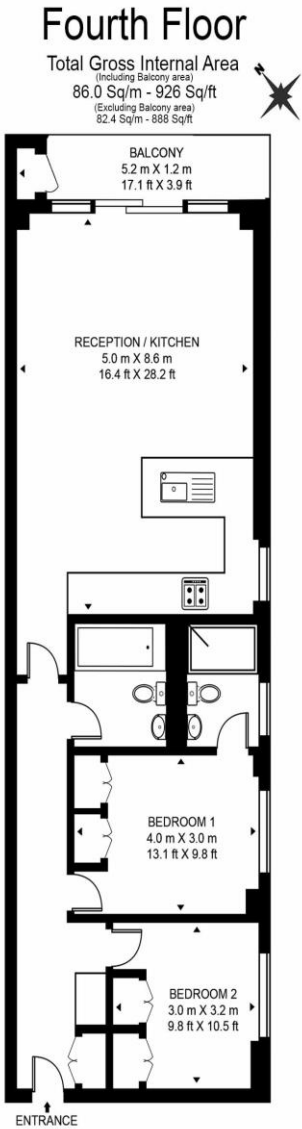




Property Features:

- Newly Refurbished
- Two Bedrooms
- Two Bathrooms
- Fourth Floor
- 926 Square Feet (Approx.) Including Balcony
- 888 Square Feet (Approx.) Excluding Balcony
- Private Balcony with Direct River View
- Secure Underground Car Parking
- 24 Hour Concierge Service
- Imperial Wharf (London Overground Line, Zone 2)





Floor Plan measurements are approximate and are for illustrative purposes only. While we do not doubt the floor plans accuracy, we make no guarantee, warranty or representation as to the accuracy and completeness of the floor plan.

Score	Energy rating	Current	Potential
92+	A		
81-91	B	83 B	83 B
69-80	C		
55-68	D		
39-54	E		
21-38	F		
1-20	G		

Terms & Conditions:

These particulars are for guidance purposes only and do not form part of an offer or contract.

Offers in excess of: £750,000

Tenure: Leasehold
Expires 25/12/2988
Approximately 962 Years Remaining

Ground Rent: £50.00 (per annum)
For the year 2026

Service Charge: £7,700.00 (per annum)
For the year 2026 - Heating and hot water included
Sinking Fund: £1,700

Anticipated Rent: £3,350.00 pcm
Approx. 5.40% Yield

Viewings:

All viewings are by appointment only through our Imperial Wharf Office.

Our reference: NIN250268

T: 020 3282 3700

E: ImperialWharf.sales@benhams.com

W: www.benhams.com

Disclaimer: These particulars are for guidance purposes only and do not form part of an offer or contract. Whilst care has been taken in their preparation, Benham and Reeves or the vendor shall not be held responsible for any inaccuracies. You should not rely on statements by Benham and Reeves Ltd in the particulars or by word of mouth or in writing as being factually accurate about the property, its condition or its value. Any areas, measurements or distances are approximate. The text, photographs and plans are for guidance only. The photographs appearing in these particulars show only certain parts of the property at the time when the photographs were taken. It should not be assumed that the property has all or any of the necessary planning permission, building regulation consent approval or other required consents for its previous, present or future intended usage. Any intending purchasers must satisfy themselves by inspection or by taking appropriate professional advice. Benham and Reeves Ltd has not rested any of the equipment, fittings or facilities.

London | Canary Wharf | City | Colindale | Dartmouth Park | Ealing | Fulham | Hampstead
Hammersmith | Highgate | Hyde Park | Kensington | Kew | Knightsbridge | Nine Elms
Surrey Quays | Shoreditch | Wembley | Wapping | White City | Woolwich

International | China | Hong Kong | India | Israel | Malaysia | Middle East | Pakistan
Singapore | South Africa | Turkey

