



Queensberry Place, Kensington, SW7

Asking Price: £1,400,000

 Benham
& Reeves

Queensberry Place, Kensington, SW7

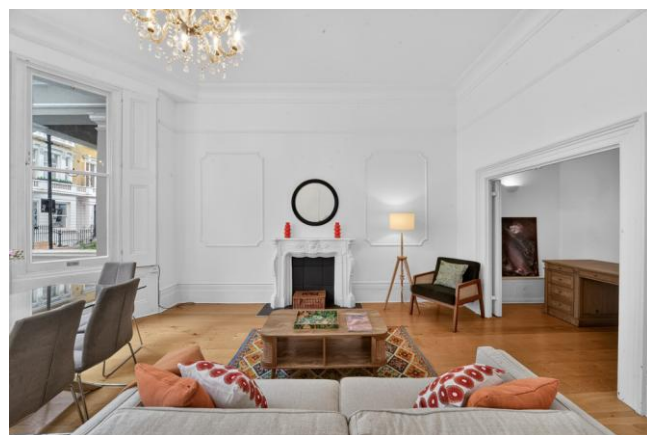
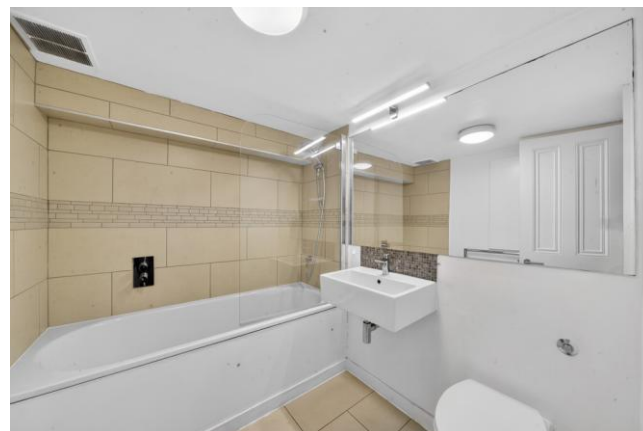
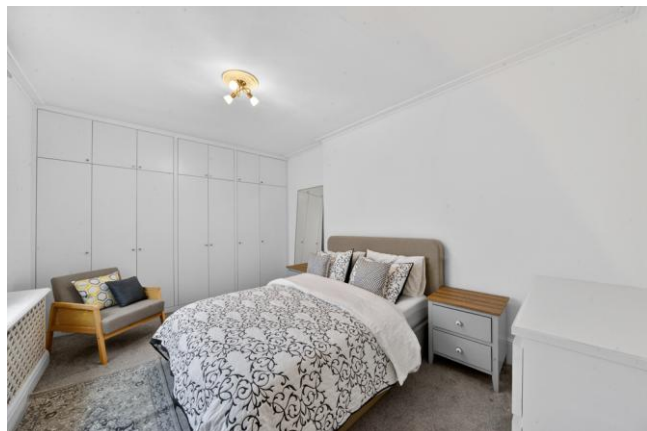
🏠 2 Bedroom (s) 🚿 1 Bathroom (s) 🔑 Share of Freehold

Situated on the raised ground floor of this period building in Queensberry Place is this fantastic two bedroom, two bathroom lateral apartment, spanning approximately 945 square feet.

This fabulous property features a bright and airy living/dining room with large sash windows that flood the space with natural light. There is a separate, fully fitted, modern-style kitchen with integrated appliances. Both bedrooms are positioned at the rear of the property, have carpeted floors for comfort, and include built-in wardrobes, with the principal bedroom having its own ensuite three-piece bathroom suite. Additional benefits include a second shower room, ample storage, wooden flooring in the living areas, and elegant period details such as high ceilings and original features, which add character to the majority of the apartment.

Located between Hyde Park and South Kensington's cultural quarter, Queen's Gate is within immediate reach of the Royal Albert Hall and the Victoria & Albert Museum. The boutiques of Knightsbridge and the local amenities of Gloucester Road are moments away, positioning the house at the heart of London's most established residential enclave.

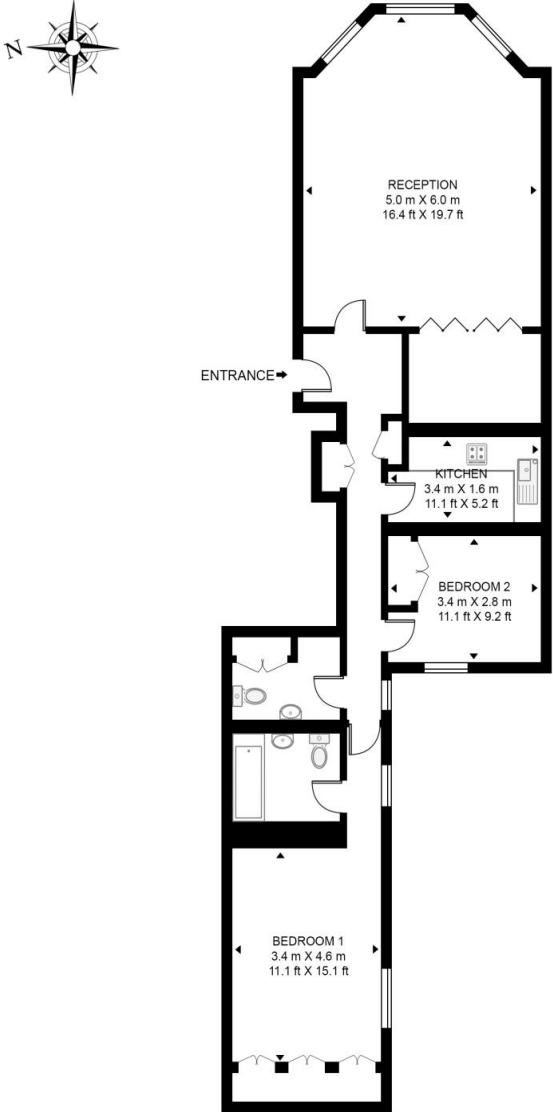




Property Features:

- Share of Freehold
- Two Bedrooms
- Two Bathrooms
- 945 Square Feet
- Ground Floor
- South Kensington Station (0.2 miles)
- Gloucester Road Station (0.2 miles)
- Earls Court Station (0.6 miles)

QUEENSBURY PLACE
 APPROXIMATE GROSS INTERNAL FLOOR AREA 945 SQ.FT (87.8 SQ.M)



GROUND FLOOR

Score	Energy rating	Current	Potential
92+	A		
81-91	B		82 B
69-80	C	70 C	
55-68	D		
39-54	E		
21-38	F		
1-20	G		

This floor plan has been defined by the RICS Code of Measurement. This floor plan and all others are for approximate representative purposes only and upon usage is agreed to as such by the client.
 WWW: hdvirtualart.com | TEL: 0203.974.1567 | EMAIL: info@hdvirtualart.com

Terms & Conditions:

These particulars are for guidance purposes only and do not form part of an offer or contract.

Asking Price:	£1,400,000
Tenure:	Share of Freehold Expires 08/09/2984 Approximately 958 Years Remaining
Ground Rent:	Nil
Service Charge:	£6,400.00 (per annum) for the year 2026
Anticipated Rent:	£3,150.00 pcm Approx. 2.7% Yield

Viewings:

All viewings are by appointment only through our Kensington Office.

Our reference: HMM260164

T: 020 7938 3522

E: kensington.sales@benhams.com

W: www.benhams.com

Disclaimer: These particulars are for guidance purposes only and do not form part of an offer or contract. Whilst care has been taken in their preparation, Benham and Reeves or the vendor shall not be held responsible for any inaccuracies. You should not rely on statements by Benham and Reeves Ltd in the particulars or by word of mouth or in writing as being factually accurate about the property, its condition or its value. Any areas, measurements or distances are approximate. The text, photographs and plans are for guidance only. The photographs appearing in these particulars show only certain parts of the property at the time when the photographs were taken. It should not be assumed that the property has all or any of the necessary planning permission, building regulation consent approval or other required consents for its previous, present or future intended usage. Any intending purchasers must satisfy themselves by inspection or by taking appropriate professional advice. Benham and Reeves Ltd has not rested any of the equipment, fittings or facilities.

London | Canary Wharf | City | Colindale | Dartmouth Park | Ealing | Fulham | Hampstead
Hammersmith | Highgate | Hyde Park | Kensington | Kew | Knightsbridge | Nine Elms
Surrey Quays | Shoreditch | Wembley | Wapping | White City | Woolwich

International | China | Hong Kong | India | Israel | Malaysia | Middle East | Pakistan
Singapore | South Africa | Turkey

