



Doulton House, Park Street, Fulham, SW6

Asking Price: £750,000

Benham
& Reeves

Doulton House, Park Street, Fulham, SW6

 2 Bedroom (s)  2 Bathroom (s)  Leasehold

Situated on the ground floor of Doulton House, Chelsea Creek is a stunning apartment comprising an open-plan lounge with access to a south-east-facing private terrace and a living room area, which benefits from a well-appointed kitchen with integrated appliances and a breakfast bar. There are two double bedrooms with the principal bedroom benefiting from fitted wardrobes and an en-suite shower room, and an additional bathroom accessed from the hallway. Further benefits include wood flooring in the main living areas, storage throughout and a secure underground right to park space.

The residents of Chelsea Creek benefit from a 24-hour concierge, a residents' gym, a swimming pool, and secure underground parking. The development is in close proximity to the famous King's Road and its wide range of designer boutiques, top-class restaurants, bars and quaint cafes.

Transport links include Imperial Wharf Overground Station (0.1 miles), which provides quick links to Clapham Junction, Shepherd's Bush (for the Central line and Westfield shopping centre) and Fulham Broadway (District line).





Property Features:

- Two Bedrooms
- Two Bathrooms
- Ground Floor
- 793 Square Feet (Approx.)
- Private Terrace
- Parking
- 24 Hour Concierge
- Gym and Spa Facilities
- Imperial Wharf Station (Zone 2)

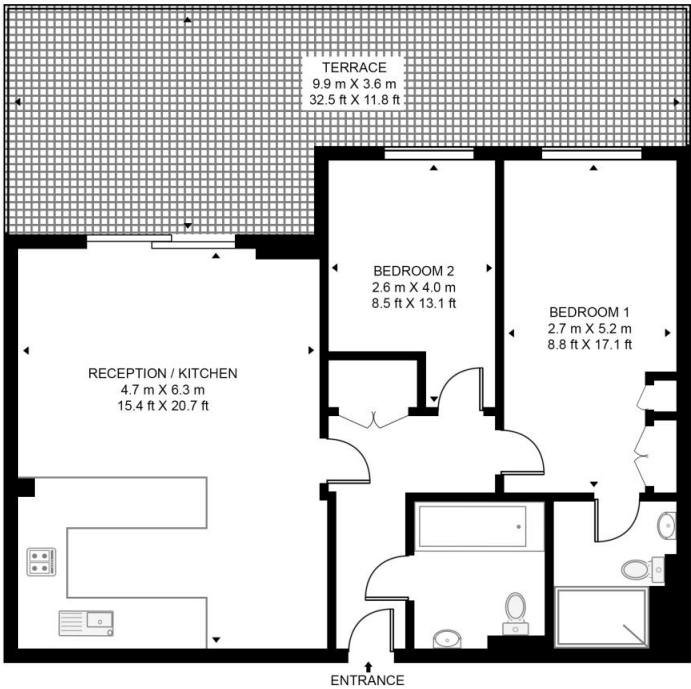


Doulton House, Park Street, Fulham, SW6



DOULTON HOUSE, PARK STREET

APPROXIMATE GROSS INTERNAL FLOOR AREA 793 SQ.FT (73.7 SQ.M)



GROUND FLOOR

Score	Energy rating	Current	Potential
92+	A		
81-91	B		
69-80	C		
55-68	D	67 D	69 C
39-54	E		
21-38	F		
1-20	G		

This floor plan has been defined by the RICS Code of Measurement. This floor plan and all others are for approximate representative purposes only and upon usage is agreed to as such by the client.
 WWW: hdvirtualart.com | TEL: 0203.974.1567 | EMAIL: info@hdvirtualart.com

Terms & Conditions:

These particulars are for guidance purposes only and do not form part of an offer or contract.

Asking Price: £750,000

Tenure: Leasehold
Expires 01/06/3009
Approximately 983 Years Remaining

Ground Rent: £450.00 (per annum)
Review Period: 20 years
Next: 2030
Increase: 100%

Service Charge: £7,827.95 (per annum) for the year 2026

Anticipated Rent: £4,000.00 pcm
Approx. 6.4% Yield

Viewings:

All viewings are by appointment only through our Imperial Wharf Office.

Our reference: NIN260058

T: 020 3282 3700

E: imperialwharf.sales@benhams.com

W: www.benhams.com

Disclaimer: These particulars are for guidance purposes only and do not form part of an offer or contract. Whilst care has been taken in their preparation, Benham and Reeves or the vendor shall not be held responsible for any inaccuracies. You should not rely on statements by Benham and Reeves Ltd in the particulars or by word of mouth or in writing as being factually accurate about the property, its condition or its value. Any areas, measurements or distances are approximate. The text, photographs and plans are for guidance only. The photographs appearing in these particulars show only certain parts of the property at the time when the photographs were taken. It should not be assumed that the property has all or any of the necessary planning permission, building regulation consent approval or other required consents for its previous, present or future intended usage. Any intending purchasers must satisfy themselves by inspection or by taking appropriate professional advice. Benham and Reeves Ltd has not rested any of the equipment, fittings or facilities.

London | Canary Wharf | City | Colindale | Dartmouth Park | Ealing | Fulham | Hampstead
Hammersmith | Highgate | Hyde Park | Kensington | Kew | Knightsbridge | Nine Elms
Surrey Quays | Shoreditch | Wembley | Wapping | White City | Woolwich

International | China | Hong Kong | India | Israel | Malaysia | Middle East | Pakistan
Singapore | South Africa | Turkey

