



Ambassador Building, New Union Square, Nine Elms, SW11

Offers in excess of: £900,000

 Benham
& Reeves

Ambassador Building, New Union Square, Nine Elms, SW11

 2 Bedroom (s)  2 Bathroom (s)  Leasehold

Situated on the second floor of The Ambassador Building, Embassy Gardens is this luxurious two bedroom, two bathroom apartment which spans approximately 1,021 square feet. The apartment comprises an open-plan reception room leading to a private west-facing balcony overlooking the River via floor-to-ceiling doors. There is a fully equipped kitchen with high-specification integrated appliances, and the principal bedroom has fitted wardrobes and a marble ensuite bathroom. There is a second double bedroom, a family bathroom and ample storage. The property also benefits from a luxury finish, wooden flooring, air conditioning and storage throughout.

Embassy Gardens is a 21st-century development inspired by classic 1950s American design which manifests itself through the creative use of space, materials and detailing. With its own green space, art trail, shops, restaurants and cafés, Embassy Gardens offers residents and their guests the complete London experience in the centre of the city. All Embassy Gardens residents gain exclusive membership to the Eg:le Club, which grants residents and their guests access to the Sky Deck with Sky Pool and Orangery rooftop bar, Maureen O'Hara private cinema, Belmont Gym, and so much more. Residents at Embassy Gardens are able to float through the air in the world's only Sky Pool. Spanning the Embassy Gardens' Legacy Buildings, the Sky Pool is the world's first 'floating' swimming pool.

Ambassador Building is perfectly situated within walking distance of the amenities of Nine Elms and Battersea Power Station, which is served by the Northern line. Excellent transport links provide easy access to businesses, shops, entertainment, and airports across London.





Property Features:

- Two Bedrooms
- Two Bathrooms
- Second Floor
- 1,021 Square Feet (Approx.)
- Private West-Facing Balcony with River View
- 24 Hour Concierge
- Sky Pool, Swimming Pool
- Residents' Roof Terrace & Cinema
- Communal Garden
- Battersea Power Station (Zone 1)

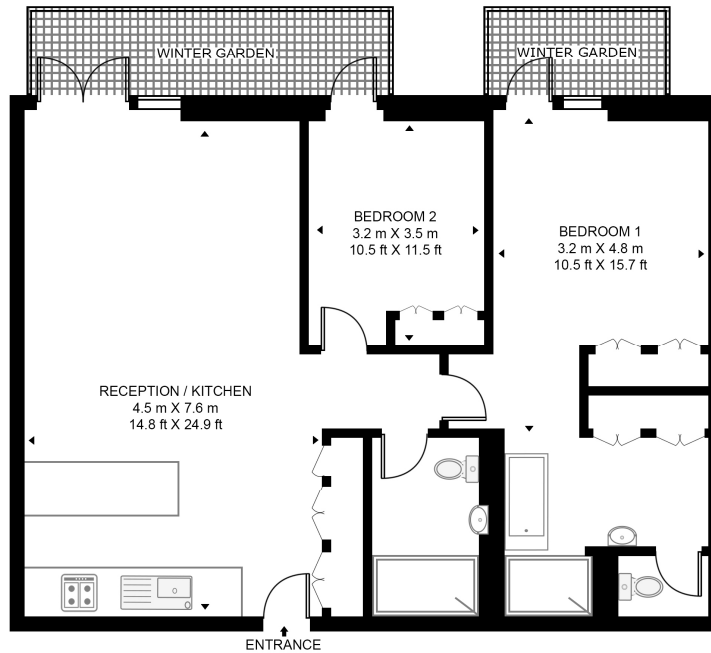


Ambassador Building, New Union Square, Nine Elms, SW11



AMBASSADOR BUILDING, EMBASSY GARDENS
 APPROXIMATE GROSS INTERNAL FLOOR AREA 879 SQ.FT (81.7 SQ.M)
 (INCLUDING WINTER GARDEN 1021 SQ.FT (94.9 SQ.M))

Score	Energy rating	Current	Potential
92+	A		
81-91	B		
69-80	C	80 C	80 C
55-68	D		
39-54	E		
21-38	F		
1-20	G		



SECOND FLOOR

This floor plan has been defined by the RICS Code of Measurement. This floor plan and all others are for approximate representative purposes only and upon usage is agreed to as such by the client.

Terms & Conditions:

These particulars are for guidance purposes only and do not form part of an offer or contract.

Offers in excess of: £900,000

Tenure: Leasehold
Expires 31/12/3009
Approximately 983 Years Remaining

Ground Rent: £750.00 (per annum)
for the year 2026

Service Charge: £9,843.00 (per annum)
for the year 2026

Anticipated Rent: £4,500.00 pcm
Approx. 6.0% Yield

Viewings:

All viewings are by appointment only through our Nine Elms Office.

Our reference: NIN230053

T: 020 3282 3700

E: nineelms.sales@benhams.com

W: www.benhams.com

Disclaimer: These particulars are for guidance purposes only and do not form part of an offer or contract. Whilst care has been taken in their preparation, Benham and Reeves or the vendor shall not be held responsible for any inaccuracies. You should not rely on statements by Benham and Reeves Ltd in the particulars or by word of mouth or in writing as being factually accurate about the property, its condition or its value. Any areas, measurements or distances are approximate. The text, photographs and plans are for guidance only. The photographs appearing in these particulars show only certain parts of the property at the time when the photographs were taken. It should not be assumed that the property has all or any of the necessary planning permission, building regulation consent approval or other required consents for its previous, present or future intended usage. Any intending purchasers must satisfy themselves by inspection or by taking appropriate professional advice. Benham and Reeves Ltd has not rested any of the equipment, fittings or facilities.

London | Canary Wharf | City | Colindale | Dartmouth Park | Ealing | Fulham | Hampstead
Hammersmith | Highgate | Hyde Park | Kensington | Kew | Knightsbridge | Nine Elms
Surrey Quays | Shoreditch | Wembley | Wapping | White City | Woolwich

International | China | Hong Kong | India | Israel | Malaysia | Middle East | Pakistan
Singapore | South Africa | Turkey

