



Damac Tower, Bondway, Nine Elms, SW8

Asking Price: £950,000

 Benham
& Reeves

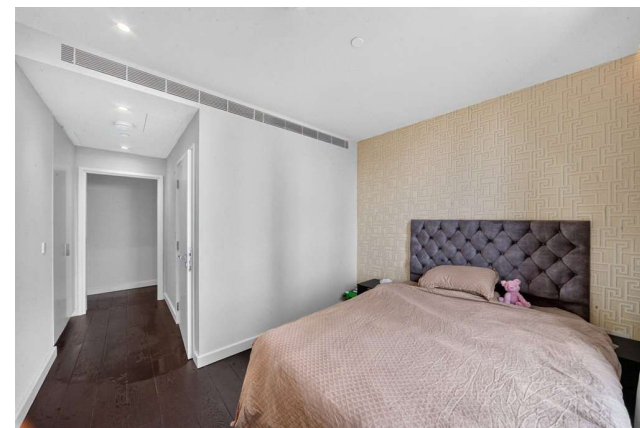
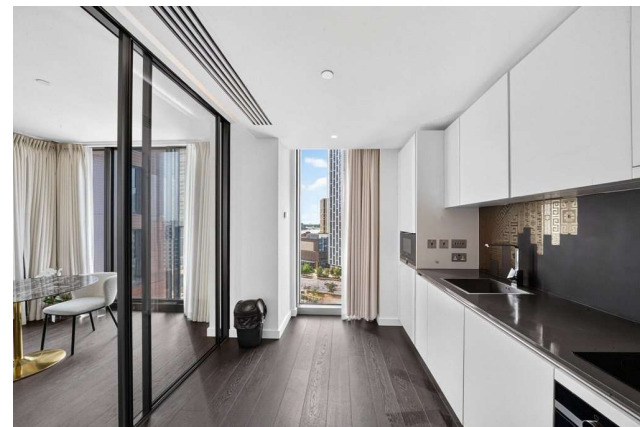
Damac Tower, Bondway, Nine Elms, SW8

 2 Bedroom (s)  2 Bathroom (s)  Leasehold

Spanning approximately 969 square feet, the property features a large, open-plan living room with access to a private winter garden and a fully fitted kitchen. The kitchen benefits from fully integrated appliances and is finished to a superb standard. The apartment features air conditioning and wooden flooring throughout. The two double bedrooms offer great space, with the principal bedroom also benefiting from an en-suite bathroom. There is a main bathroom off the hallway, along with ample storage and a utility cupboard with a washer/dryer.

Architecturally, Damac Tower is one of the most visually impressive developments in London's Zone 1, serving as an elegant addition to the Nine Elms residential regeneration area, which boasts excellent transport links and access to the City. The facilities at Damac Tower are second to none, featuring a swimming pool, spa, and gym on the 23rd floor. This allows you to enjoy far-reaching views of the London skyline while exercising, relaxing, and unwinding.

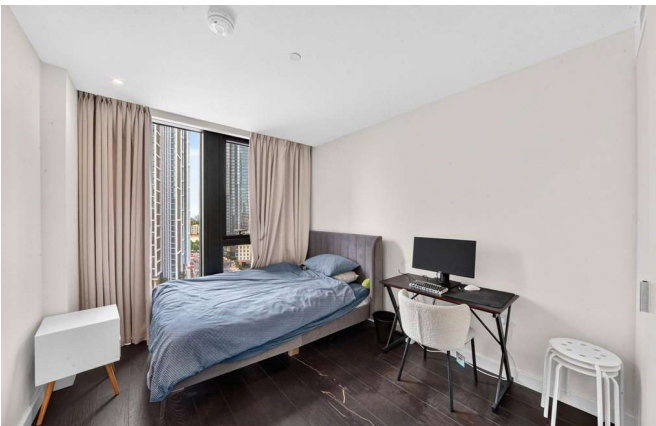
Located a short walk from Vauxhall Overground and Underground Station, Zone 1.





Property Features:

- Two Bedrooms
- Two Bathrooms
- Eleventh Floor
- 969 Square Feet (Approx.) Including Winter Garden
- Comfort Cooling (Air Conditioning)
- 24-Hour Concierge
- Communal Gardens
- Expansive Indoor Swimming Pool and Jacuzzi
- State-of-the-art Gymnasium
- Vauxhall Overground and Underground Stations (Zone 1)



Damac Tower, Bondway, Nine Elms, SW8

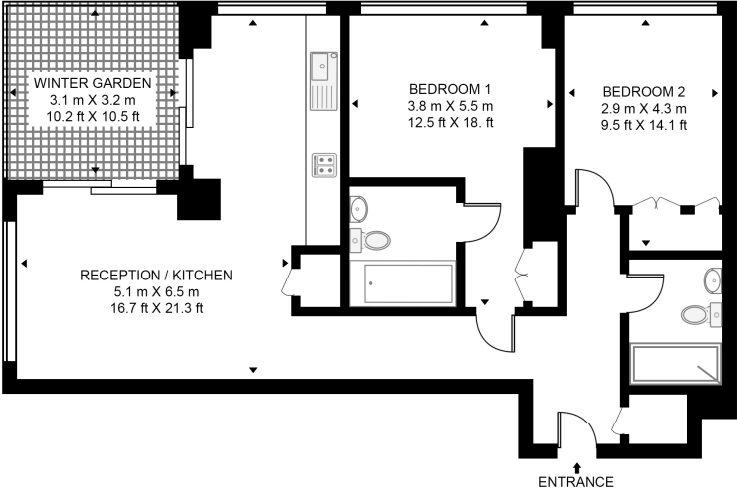


BONDWAY

APPROXIMATE GROSS INTERNAL FLOOR AREA 969 SQ.FT (90 SQ.M)
(INCLUDING WINTER GARDEN)



Score	Energy rating	Current	Potential
92+	A		
81-91	B	84 B	84 B
69-80	C		
55-68	D		
39-54	E		
21-38	F		
1-20	G		



This floor plan has been defined by the RICS Code of Measurement. This floor plan and all others are for approximate representative purposes only and upon usage is agreed to as such by the client.
WWW: hdvirtualart.com | TEL: 0203.974.1567 | EMAIL: info@hdvirtualart.com

Terms & Conditions:

These particulars are for guidance purposes only and do not form part of an offer or contract.

Asking Price:	£950,000
Tenure:	Leasehold Expires 14/06/3021 Approximately 995 Years Remaining
Ground Rent:	Nil
Service Charge:	£11,841.20 (per annum) For the year 2026
Anticipated Rent:	£4,500.00 pcm Approx. 5.7% Yield

Viewings:

All viewings are by appointment only through our Nine Elms Office.

Our reference: NIN260119

T: 020 3282 3700

E: nineelms.sales@benhams.com

W: www.benhams.com

Disclaimer: These particulars are for guidance purposes only and do not form part of an offer or contract. Whilst care has been taken in their preparation, Benham and Reeves or the vendor shall not be held responsible for any inaccuracies. You should not rely on statements by Benham and Reeves Ltd in the particulars or by word of mouth or in writing as being factually accurate about the property, its condition or its value. Any areas, measurements or distances are approximate. The text, photographs and plans are for guidance only. The photographs appearing in these particulars show only certain parts of the property at the time when the photographs were taken. It should not be assumed that the property has all or any of the necessary planning permission, building regulation consent approval or other required consents for its previous, present or future intended usage. Any intending purchasers must satisfy themselves by inspection or by taking appropriate professional advice. Benham and Reeves Ltd has not rested any of the equipment, fittings or facilities.

London | Canary Wharf | City | Colindale | Dartmouth Park | Ealing | Fulham | Hampstead
Hammersmith | Highgate | Hyde Park | Kensington | Kew | Knightsbridge | Nine Elms
Surrey Quays | Shoreditch | Wembley | Wapping | White City | Woolwich

International | China | Hong Kong | India | Israel | Malaysia | Middle East | Pakistan
Singapore | South Africa | Turkey

