



# Park West, Edgware Road, Paddington, W2

Asking Price: £600,000



# Park West, Edgware Road, Paddington, W2

 2 Bedroom (s)  2 Bathroom (s)  Leasehold

A well-proportioned apartment spanning approximately 723 square feet and located on the ninth floor of the popular residential development, Park West, on Edgware Road. The accommodation comprises a bright living area, a separate kitchen, two double bedrooms, and two bathrooms (including one en-suite). The property would make an excellent buy-to-let investment or first-time buyer opportunity.

Services in this 1930s Art Deco block include a 24-hour on-site concierge, lifts, entry phone system, as well as communal hot water and heating.

Park West is located just a short walk from Marble Arch tube station, Paddington station, Edgware Road tube station, Oxford Street and the open spaces of Hyde Park.



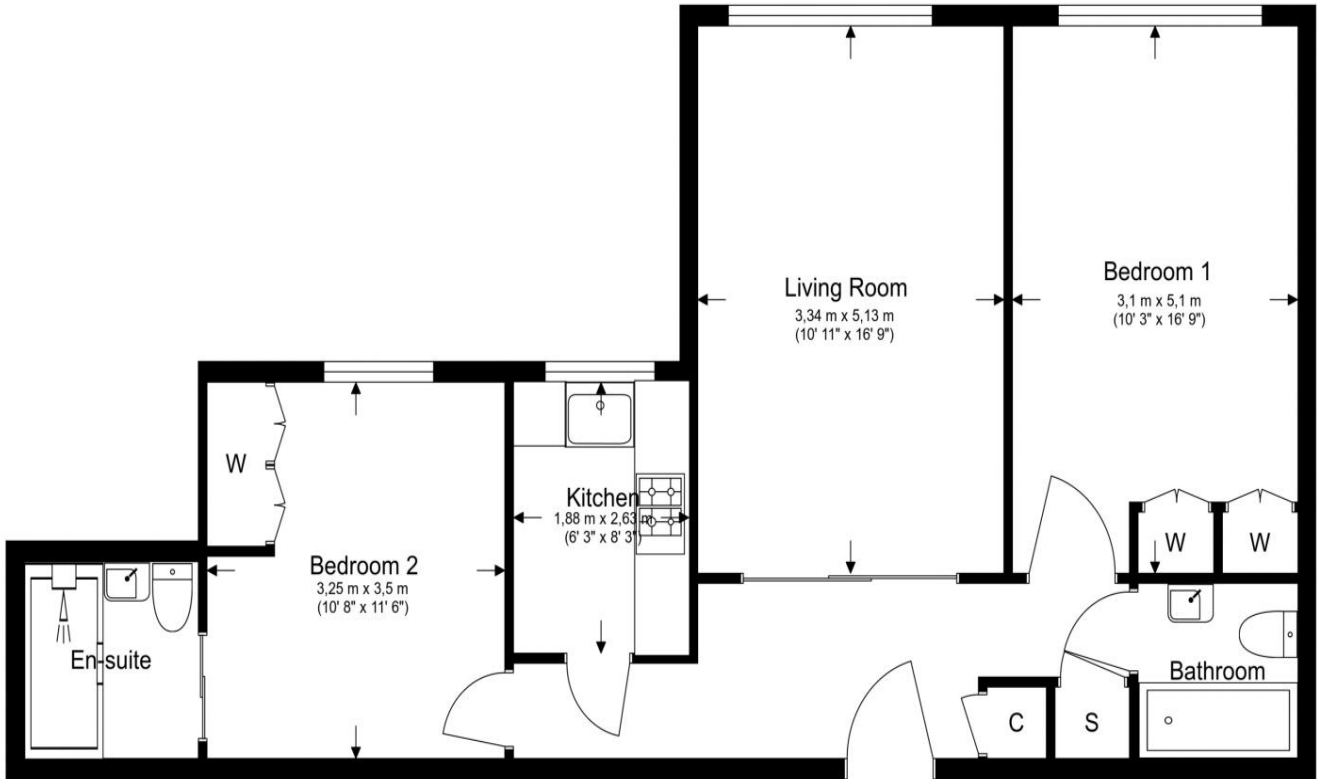


## Property Features:

- Two Bedrooms
- Two Bathrooms
- Ninth Floor
- 721 Square Feet approximately
- 24 Hour Concierge
- Marble Arch (0.3 miles)
- Edgware Road (0.4 miles)
- Paddington Station (0.5 miles)



## 9th Floor Total Gross Internal Area 67.1 Sq/m - 723 Sq/ft



| Score | Energy rating | Current | Potential |
|-------|---------------|---------|-----------|
| 92+   | A             |         |           |
| 81-91 | B             |         |           |
| 69-80 | C             |         | 76 C      |
| 55-68 | D             |         |           |
| 39-54 | E             | 52 E    |           |
| 21-38 | F             |         |           |
| 1-20  | G             |         |           |



Floor Plan measurements are approximate and are for illustrative purposes only. While we do not doubt the floor plans accuracy, we make no guarantee, warranty or representation as to the accuracy and completeness of the floor plan.

## Terms & Conditions:

These particulars are for guidance purposes only and do not form part of an offer or contract.

|                   |   |
|-------------------|---|
| Asking Price:     | £600,000  |
| Tenure:           | Leasehold<br>Expires 24/12/2103<br>Approximately 77 Years Remaining |
| Ground Rent:      | £270.00 (per annum)<br>to June 2026                                 |
| Service Charge:   | £7,338.50 (per annum)<br>for the year 2027                          |
| Anticipated Rent: | £3,177.00 pcm<br>Approx. 6.4% Yield                                 |

## Viewings:

All viewings are by appointment only through our Hyde Park Office.

Our reference: KEN260051

T: 020 7938 3522

E: [hydepark.sales@benhams.com](mailto:hydepark.sales@benhams.com)

W: [www.benhams.com](http://www.benhams.com)

Disclaimer: These particulars are for guidance purposes only and do not form part of an offer or contract. Whilst care has been taken in their preparation, Benham and Reeves or the vendor shall not be held responsible for any inaccuracies. You should not rely on statements by Benham and Reeves Ltd in the particulars or by word of mouth or in writing as being factually accurate about the property, its condition or its value. Any areas, measurements or distances are approximate. The text, photographs and plans are for guidance only. The photographs appearing in these particulars show only certain parts of the property at the time when the photographs were taken. It should not be assumed that the property has all or any of the necessary planning permission, building regulation consent approval or other required consents for its previous, present or future intended usage. Any intending purchasers must satisfy themselves by inspection or by taking appropriate professional advice. Benham and Reeves Ltd has not rested any of the equipment, fittings or facilities.

London | Canary Wharf | City | Colindale | Dartmouth Park | Ealing | Fulham | Hampstead  
Hammersmith | Highgate | Hyde Park | Kensington | Kew | Knightsbridge | Nine Elms  
Surrey Quays | Shoreditch | Wembley | Wapping | White City | Woolwich

International | China | Hong Kong | India | Israel | Malaysia | Middle East | Pakistan  
Singapore | South Africa | Turkey

