



Gothenburg Court, Bailey Street, Rotherhithe, SE8

Asking Price: £550,000

Benham
& Reeves

Gothenburg Court, Bailey Street, Rotherhithe, SE8

 2 Bedroom (s)  2 Bathroom (s)  Leasehold

A modern and bright two bedroom, two bathroom apartment, offering approximately 797 square feet of living space. The residence features an exquisitely designed open-plan kitchen and living area, with access to a private balcony. The primary bedroom boasts an ensuite bathroom and fitted wardrobes, while an additional double bedroom and a family bathroom provide ample accommodation.

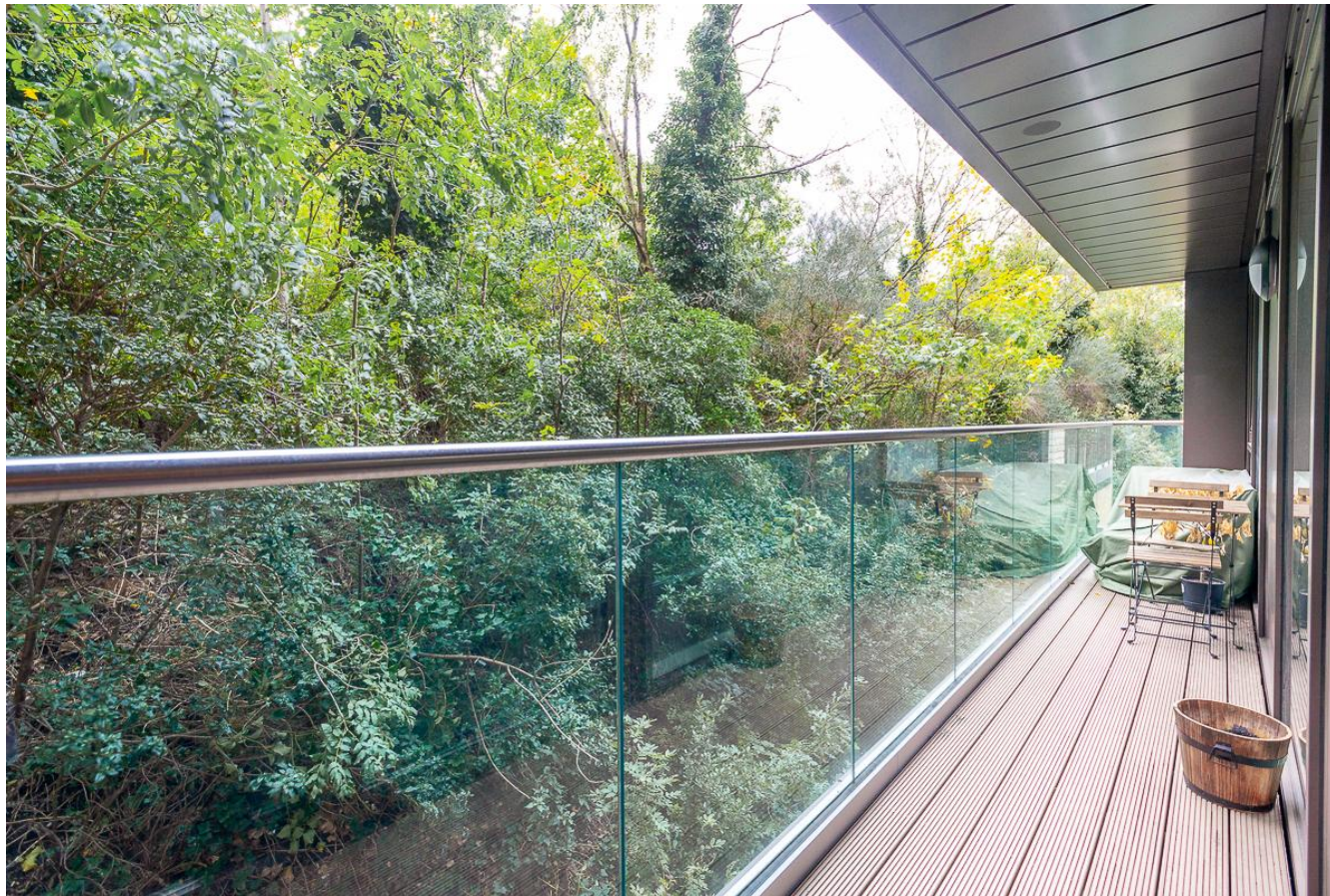
Residents of Greenland Place enjoy exclusive access to a fitness and leisure suite, complemented by the convenience of a 24-hour concierge service.

This property is within walking distance of Surrey Quays station for Overground and Canada Water for Jubilee line tube, and Greenland Pier offering easy links to The City, Canary Wharf, West End and all areas of London, including London airports.

Banks of River Thames, Rotherhithe and Surrey Quays are within walking distance with all their bars, restaurants and local amenities, including shopping centres, set for your comfort.

Thanks to its proximity to Greenwich University, the City of London and Canary Wharf, this property offers plenty of rental opportunities to landlords.



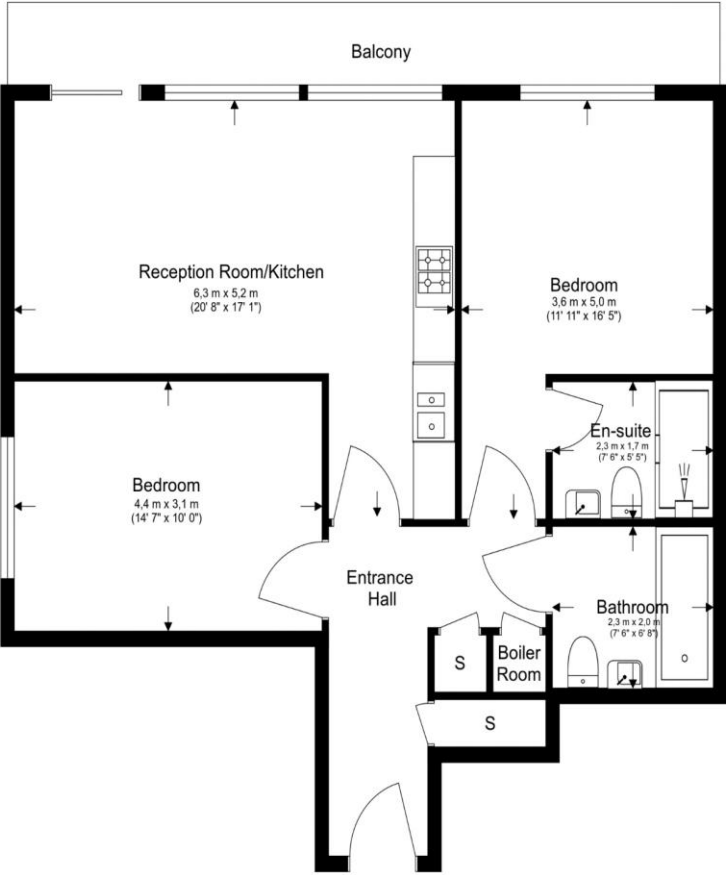


Property Features:

- Two Bedrooms
- Two Bathrooms
- 797 Square Feet (Approx.)
- Private Balcony
- 24-Hour Concierge
- Communal Gardens & Water Gardens
- Residents' Gym & Lobby
- Nelson Dock Pier: 0.4 miles, Surrey Quays Station (0.5 miles), Canada Water Station (0.9 miles) and Rotherhithe Station (1.2 miles)



First Floor Total Gross Internal Area 74.0 Sq/m - 797 Sq/ft



Floor Plan measurements are approximate and are for illustrative purposes only. While we do not doubt the floor plans accuracy, we make no guarantee, warranty or representation as to the accuracy and completeness of the floor plan.

Energy Efficiency Rating		
	Current	Potential
Very energy efficient - lower running costs		
(92+) A		
(81-91) B	85	85
(69-80) C		
(55-68) D		
(39-54) E		
(21-38) F		
(1-20) G		
Not energy efficient - higher running costs		
England, Scotland & Wales	EU Directive 2002/91/EC	

Terms & Conditions:

These particulars are for guidance purposes only and do not form part of an offer or contract.

Asking Price:	£550,000
Tenure:	Leasehold Expires 20/12/3011 Approximately 985 Years Remaining
Ground Rent:	£510.00 (per annum) for the year 2026
Service Charge:	£3,780.00 (per annum) for the year 2026
Anticipated Rent:	£2,400.00 pcm Approx. 5.2 % Yield

Viewings:

All viewings are by appointment only through our Surrey Quays Office.

Our reference: KEN240214

T: 020 7740 3050

E: surreyquays.sales@benhams.com

W: www.benhams.com

Disclaimer: These particulars are for guidance purposes only and do not form part of an offer or contract. Whilst care has been taken in their preparation, Benham and Reeves or the vendor shall not be held responsible for any inaccuracies. You should not rely on statements by Benham and Reeves Ltd in the particulars or by word of mouth or in writing as being factually accurate about the property, its condition or its value. Any areas, measurements or distances are approximate. The text, photographs and plans are for guidance only. The photographs appearing in these particulars show only certain parts of the property at the time when the photographs were taken. It should not be assumed that the property has all or any of the necessary planning permission, building regulation consent approval or other required consents for its previous, present or future intended usage. Any intending purchasers must satisfy themselves by inspection or by taking appropriate professional advice. Benham and Reeves Ltd has not rested any of the equipment, fittings or facilities.

London | Canary Wharf | City | Colindale | Dartmouth Park | Ealing | Fulham | Hampstead
Hammersmith | Highgate | Hyde Park | Kensington | Kew | Knightsbridge | Nine Elms
Surrey Quays | Shoreditch | Wembley | Wapping | White City | Woolwich

International | China | Hong Kong | India | Israel | Malaysia | Middle East | Pakistan
Singapore | South Africa | Turkey

