



Dollar Bay Place, South Quay, E14

Asking Price: £700,000

Benham
& Reeves

Dollar Bay Place, South Quay, E14

 2 Bedroom (s)  2 Bathroom (s)  Leasehold

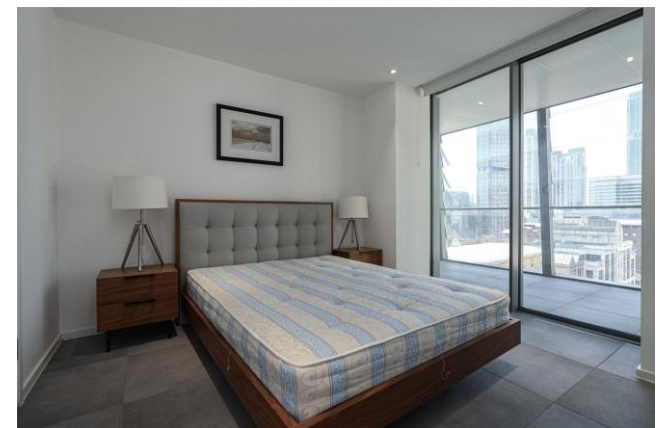
A beautifully presented two bedroom, west-facing apartment set within the striking Dollar Bay development, perfectly positioned on the edge of South Quay Dock. This exceptional home enjoys captivating water views from its winter garden and has been finished to an impressive standard throughout, with meticulous attention to detail.

Located on the 7th floor of the prestigious Dollar Bay Point, the apartment offers abundant natural light and generous living space, along with far-reaching views across South Dock and the Canary Wharf skyline.

The property delivers a seamless blend of luxury and practicality. The open-plan kitchen and living area is ideal for both relaxing and entertaining, complemented by a stylish winter garden that frames the dockside setting beautifully.

The high specification kitchen features fully integrated Siemens appliances, while underfloor heating runs throughout for added comfort. Both bedrooms are well-proportioned, with built-in wardrobes and impressive outlooks, including views over the River Thames and the O2.

Residents benefit from a 24-hour concierge service, a private gymnasium, and landscaped residents' gardens, creating a lifestyle of ease and exclusivity. Ideally located, Dollar Bay is moments from the vibrant heart of Canary Wharf, offering a wide selection of shops, restaurants, and waterside bars. Excellent transport links are close by, with both the DLR and Jubilee line providing swift access across London.





Property Features:

- Two Bedrooms
- Two Bathrooms
- Large Winter Garden
- Residents' Gym
- 24-hour Concierge
- Canary Wharf and Dock Views
- Chain Free



Dollar Bay Place, South Quay, E14

7th Floor
 Total Gross Internal Area
 81 Sq/m - 872 Sq/ft



Score	Energy rating	Current	Potential
92+	A		
81-91	B	81 B	81 B
69-80	C		
55-68	D		
39-54	E		
21-38	F		
1-20	G		



Floor Plan measurements are approximate and are for illustrative purposes only. While we do not doubt the floor plans accuracy, we make no guarantee, warranty or representation as to the accuracy and completeness of the floor plan.

Terms & Conditions:

These particulars are for guidance purposes only and do not form part of an offer or contract.

Asking Price:	£700,000
Tenure:	Leasehold Expires 28/09/3015 Approximately 989 Years Remaining
Ground Rent:	£600.00 (per annum) For the year 2026
Service Charge:	£8,784.92 (per annum) For the year 2026

Viewings:

All viewings are by appointment only through our Canary Wharf Office.

Our reference: CWH260028

T: 020 8036 3200

E: canarywharf.sales@benhams.com

W: www.benhams.com

Disclaimer: These particulars are for guidance purposes only and do not form part of an offer or contract. Whilst care has been taken in their preparation, Benham and Reeves or the vendor shall not be held responsible for any inaccuracies. You should not rely on statements by Benham and Reeves Ltd in the particulars or by word of mouth or in writing as being factually accurate about the property, its condition or its value. Any areas, measurements or distances are approximate. The text, photographs and plans are for guidance only. The photographs appearing in these particulars show only certain parts of the property at the time when the photographs were taken. It should not be assumed that the property has all or any of the necessary planning permission, building regulation consent approval or other required consents for its previous, present or future intended usage. Any intending purchasers must satisfy themselves by inspection or by taking appropriate professional advice. Benham and Reeves Ltd has not rested any of the equipment, fittings or facilities.

London | Canary Wharf | City | Colindale | Dartmouth Park | Ealing | Fulham | Hampstead
Hammersmith | Highgate | Hyde Park | Kensington | Kew | Knightsbridge | Nine Elms
Surrey Quays | Shoreditch | Wembley | Wapping | White City | Woolwich

International | China | Hong Kong | India | Israel | Malaysia | Middle East | Pakistan
Singapore | South Africa | Turkey

