



Olympic Way, Wembley, HA9

Asking Price: £550,000

Benham & Reeves

Olympic Way, Wembley, HA9

🏠 2 Bedroom (s) 🚿 2 Bathroom (s) 🔑 Leasehold

A luxurious two bedroom apartment located on the tenth floor of the highly sought after Marathon House, Wembley Park. Spanning an approximate 852 square feet the apartment offers a bright and airy living space that leads out to a West Facing private balcony which overlooks Olympic Way and has stunning views of Wembley Stadium, Wembley Arena, Boxpark London and London Designer Outlet. The apartment also comprises underfloor heating throughout a fully fitted kitchen with integrated appliances alongside two large double bedrooms, with built in wardrobes and an en-suite to the main bedroom, and a three-piece luxury finished bathroom. The apartment offers a secure telephone entry system and has been decorated to a high standard and modern finish.

Marathon House is located in the heart of Wembley Park. This development offers concierge service, secure lift access, resident's gym alongside iconic views from your balcony of Wembley Stadium showing concerts and sports events, London Designer Outlet with affordable top brand designer stores including a 9-screen cinema with IMAX, London Boxpark only a few seconds walk away and has many restaurants from different parts of the world and bars at your doorstep.

Wembley Park is London's new city with a buzzy and vibrant aspect. Marathon House offers excellent transport links via Wembley Park Station in which the Metropolitan Line takes you into Baker Street in just 12 minutes, whilst the Jubilee Line takes you into King's Cross and Paddington in just under half an hour.



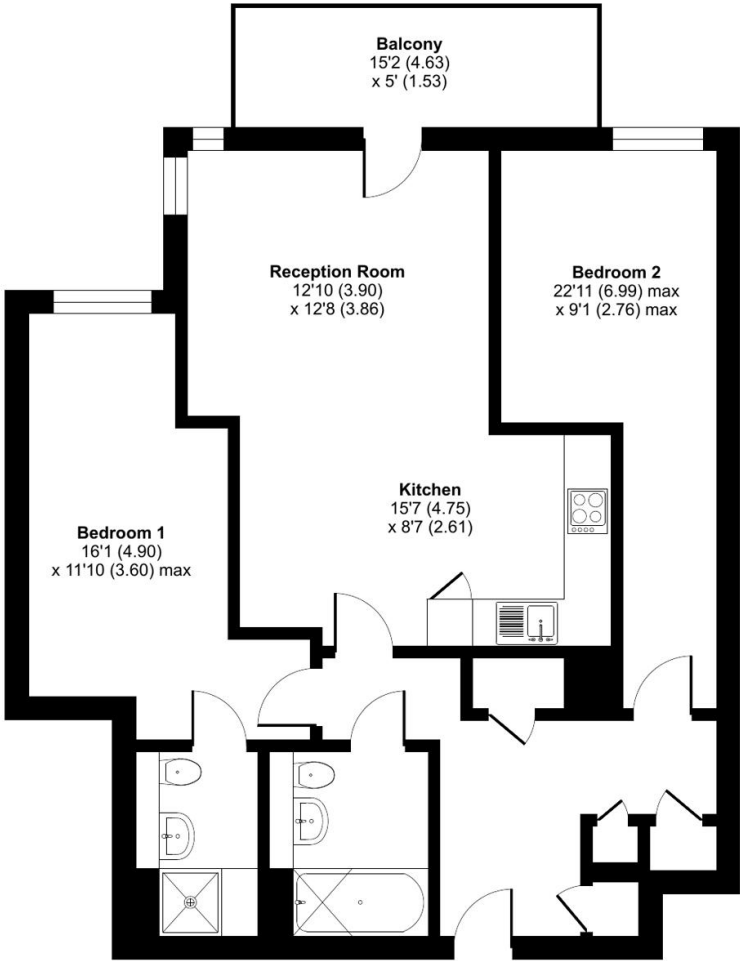


Property Features:

- Two Bedroom Apartment
- Two Bathrooms
- Tenth Floor
- 852 Square Feet (Approx.)
- Chain Free
- Concierge and Residents Only Gym
- Views of Wembley Stadium
- Wembley Park Station

Olympic Way, Wembley, HA9

Approximate Area = 852 sq ft / 79.1 sq m
For identification only - Not to scale



TENTH FLOOR

Score	Energy rating	Current	Potential
92+	A		
81-91	B	86 B	86 B
69-80	C		
55-68	D		
39-54	E		
21-38	F		
1-20	G		

Terms & Conditions:

These particulars are for guidance purposes only and do not form part of an offer or contract.

Asking Price: £550,000

Tenure: Leasehold
Expires 07/01/3015
Approximately 988 Years Remaining

Ground Rent: £400.00 (per annum)
For the year of 2026

Service Charge: £3,266.47 (per annum)
For the year of 2026

Viewings:

All viewings are by appointment only through our Beaufort Park Office.

Our reference: BEA220746

T: 020 8732 7980

E: beaufortpark.sales@benhams.com

W: www.benhams.com

Disclaimer: These particulars are for guidance purposes only and do not form part of an offer or contract. Whilst care has been taken in their preparation, Benham and Reeves or the vendor shall not be held responsible for any inaccuracies. You should not rely on statements by Benham and Reeves Ltd in the particulars or by word of mouth or in writing as being factually accurate about the property, its condition or its value. Any areas, measurements or distances are approximate. The text, photographs and plans are for guidance only. The photographs appearing in these particulars show only certain parts of the property at the time when the photographs were taken. It should not be assumed that the property has all or any of the necessary planning permission, building regulation consent approval or other required consents for its previous, present or future intended usage. Any intending purchasers must satisfy themselves by inspection or by taking appropriate professional advice. Benham and Reeves Ltd has not rested any of the equipment, fittings or facilities.

London | Canary Wharf | City | Colindale | Dartmouth Park | Ealing | Fulham | Hampstead
Hammersmith | Highgate | Hyde Park | Kensington | Kew | Knightsbridge | Nine Elms
Surrey Quays | Shoreditch | Wembley | Wapping | White City | Woolwich

International | China | Hong Kong | India | Israel | Malaysia | Middle East | Pakistan
Singapore | South Africa | Turkey

