



Cassini Apartments, Cascade Way, White City, W12

Asking Price: £1,499,999

 Benham
& Reeves

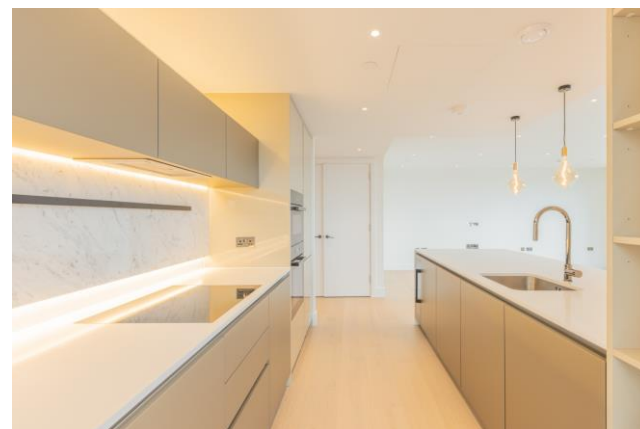
Cassini Apartments, Cascade Way, White City, W12

 2 Bedroom (s)  2 Bathroom (s)  Leasehold

Spanning a generous 945 square feet (approximately), this 2 bedroom, 2 bathroom apartment offers an array of modern conveniences and will be finished to the highest standard. Notable features include an expansive open-plan kitchen/living area with integrated Miele appliances and a breakfast bar. The two sizable double bedrooms, one en-suite, come with built-in wardrobes and the primary bedroom offers direct access to the wraparound balcony, providing unparalleled views. Additional features encompass comfort cooling in all habitable rooms and underfloor heating throughout.

Residents are able to enjoy the most extensive private residents' facilities in London. Home Club with 24-hour concierge, swimming pool with sun terrace, therapeutic hydro-pool, fully equipped gym with rooms for personal training and classes, treatment and massage rooms, dining room and private kitchen, two 12-seat private cinemas, business lounge, meeting rooms, Residents' Club lounge, café and entertainment suite.

The property is ideally located close to the open spaces of Holland Park & Shepherd's Bush Green. Transport links include White City & Wood Lane stations (Central, Circle and Hammersmith & City – Zone 2) and White City bus station, all within walking distance of the development.



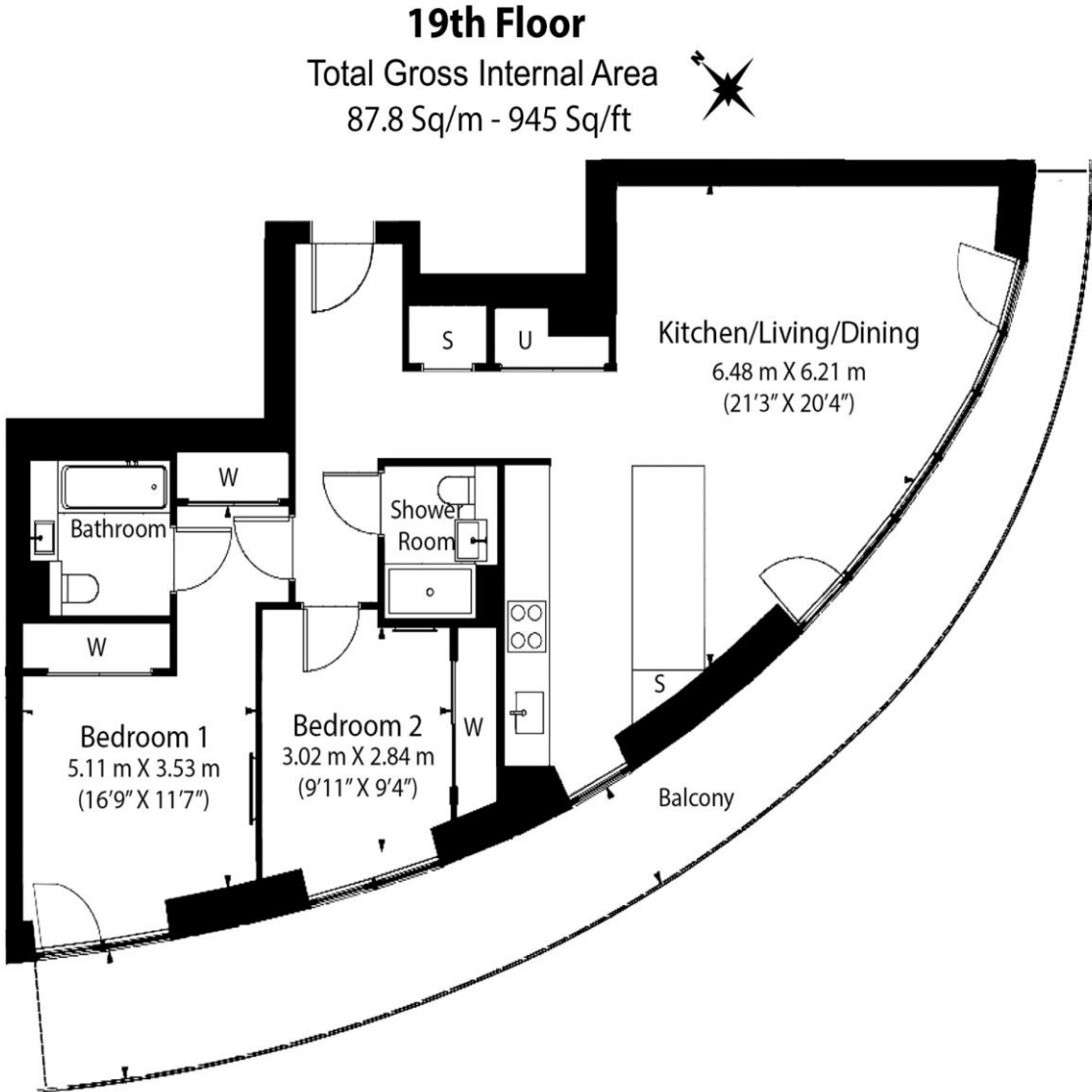
Cassini Apartments, Cascade Way, White City, W12



Property Features:

- 2 Bedrooms
- 2 Bathrooms
- 19th Floor
- 945 Square Feet (Approx.)
- Balcony with City Views Concierge
- Residents' Gym and Swimming Pool
- 24-Hour Concierge & Residents' Facilities
- White City & Wood Lane Stations (Zone 2)





Energy Efficiency Rating		
	Current	Potential
<i>Very energy efficient - lower running costs</i>		
(92+) A		
(81-91) B	87	87
(69-80) C		
(55-68) D		
(39-54) E		
(21-38) F		
(1-20) G		
<i>Not energy efficient - higher running costs</i>		
England, Scotland & Wales	EU Directive 2002/91/EC	

Floor Plan measurements are approximate and are for illustrative purposes only. While we do not doubt the floor plans accuracy, we make no guarantee, warranty or representation as to the accuracy and completeness of the floor plan.

Terms & Conditions:

These particulars are for guidance purposes only and do not form part of an offer or contract.

Asking Price:	£1,499,999
Tenure:	Leasehold Expires 01/01/3018 Approximately 993 Years Remaining
Ground Rent:	Nil
Service Charge:	£5,575.50 (per annum)

Viewings:

All viewings are by appointment only through our White City Office.

Our reference: KEN230136

T: 020 7402 9866

E: whitecity.sales@benhams.com

W: www.benhams.com

Disclaimer: These particulars are for guidance purposes only and do not form part of an offer or contract. Whilst care has been taken in their preparation, Benham and Reeves or the vendor shall not be held responsible for any inaccuracies. You should not rely on statements by Benham and Reeves Ltd in the particulars or by word of mouth or in writing as being factually accurate about the property, its condition or its value. Any areas, measurements or distances are approximate. The text, photographs and plans are for guidance only. The photographs appearing in these particulars show only certain parts of the property at the time when the photographs were taken. It should not be assumed that the property has all or any of the necessary planning permission, building regulation consent approval or other required consents for its previous, present or future intended usage. Any intending purchasers must satisfy themselves by inspection or by taking appropriate professional advice. Benham and Reeves Ltd has not rested any of the equipment, fittings or facilities.

London | Canary Wharf | City | Colindale | Dartmouth Park | Ealing | Fulham | Hampstead
Hammersmith | Highgate | Hyde Park | Kensington | Kew | Knightsbridge | Nine Elms
Surrey Quays | Shoreditch | Wembley | Wapping | White City | Woolwich

International | China | Hong Kong | India | Israel | Malaysia | Middle East | Pakistan
Singapore | South Africa | Turkey

