



# Hennessey Apartments, Brigadier Walk, Woolwich, SE18

Asking Price: £770,000

 Benham  
& Reeves

# Hennessey Apartments, Brigadier Walk, Woolwich, SE18

 2 Bedroom (s)  2 Bathroom (s)  Leasehold

Occupying a prime twenty-first-floor position within the luxurious Hennessey Apartments at Royal Arsenal Riverside, this impressive two bedroom, two bathroom penthouse apartment offers sophisticated living with far-reaching views, contemporary interiors, and exceptional privacy. Spanning approximately 850 square feet, the property features a thoughtfully arranged open-plan living and dining area that leads onto a private south-west facing balcony with partial river views. A fully fitted kitchen with integrated appliances and contemporary, high-spec finishes throughout.

The main bedroom is well-appointed with fitted wardrobes and natural lighting, and an en-suite shower with contemporary fittings. There is another double bedroom, which is currently used as a fantastic office with views. A modern three-piece bathroom suite is finished to a high standard. Additional benefits include ample storage and elegant wooden flooring across the main living space, and parking is included.

Residents of Royal Arsenal Riverside enjoy access to on-site amenities, including a fully equipped gym, swimming pool, and concierge service. Ideally located moments from the River Thames, the development is surrounded by convenient local amenities, with Marks & Spencer, Lidl, and a large Tesco all within easy walking distance. A vibrant high street offering a mix of independent and well-known shops, restaurants, and essential health services is also close by.

Excellent transport connectivity is provided via nearby Woolwich Arsenal stations, offering Elizabeth line, DLR and National Rail services, ensuring swift access across London.



# Hennessey Apartments, Brigadier Walk, Woolwich, SE18



## Property Features:

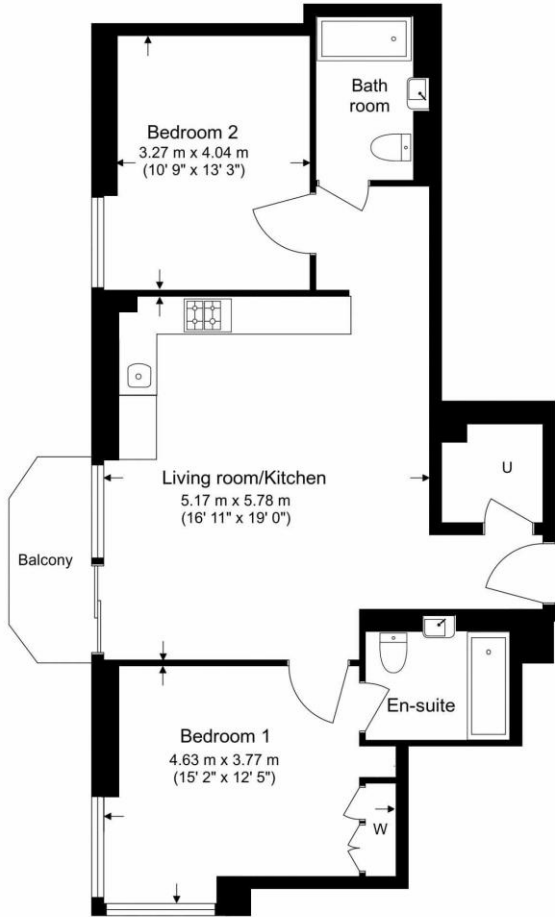
- Right To Park
- Two Double Bedrooms
- Two Bathrooms
- 21st Floor
- 850 Square Feet (Approx.)
- Open-Plan Kitchen
- South-West Facing Balcony
- Parking
- Partial River View
- Cinema and Swimming Pool
- Residents' Gym and 24 Hour Concierge
- Woolwich Overground and DLR Station
- Elizabeth Line



# Hennessey Apartments, Brigadier Walk, Woolwich, SE18



21<sup>st</sup> Floor  
 Total Gross Internal Area  
 79 Sq/m - 850 Sq/ft



Score	Energy rating	Current	Potential
92+	A		
81-91	B	86 B	86 B
69-80	C		
55-68	D		
39-54	E		
21-38	F		
1-20	G		



Floor Plan measurements are approximate and are for illustrative purposes only. While we do not doubt the floor plans accuracy, we make no guarantee, warranty or representation as to the accuracy and completeness of the floor plan.

# Hennessey Apartments, Brigadier Walk, Woolwich, SE18

## Terms & Conditions:

These particulars are for guidance purposes only and do not form part of an offer or contract.

Asking Price:	£770,000
Tenure:	Leasehold Expires 31/12/3020 Approximately 994 Years Remaining
Ground Rent:	£500.00 (per annum)
Service Charge:	£4,400.00 (per annum) until September 2026
Anticipated Rent:	£2,800.00 pcm Approx. 4.4% Yield

## Viewings:

All viewings are by appointment only through our Woolwich Office.

Our reference: WOO260150

T: 020 8051 0700

E: [woolwich.sales@benhams.com](mailto:woolwich.sales@benhams.com)

W: [www.benhams.com](http://www.benhams.com)

Disclaimer: These particulars are for guidance purposes only and do not form part of an offer or contract. Whilst care has been taken in their preparation, Benham and Reeves or the vendor shall not be held responsible for any inaccuracies. You should not rely on statements by Benham and Reeves Ltd in the particulars or by word of mouth or in writing as being factually accurate about the property, its condition or its value. Any areas, measurements or distances are approximate. The text, photographs and plans are for guidance only. The photographs appearing in these particulars show only certain parts of the property at the time when the photographs were taken. It should not be assumed that the property has all or any of the necessary planning permission, building regulation consent approval or other required consents for its previous, present or future intended usage. Any intending purchasers must satisfy themselves by inspection or by taking appropriate professional advice. Benham and Reeves Ltd has not rested any of the equipment, fittings or facilities.

London | Canary Wharf | City | Colindale | Dartmouth Park | Ealing | Fulham | Hampstead  
Hammersmith | Highgate | Hyde Park | Kensington | Kew | Knightsbridge | Nine Elms  
Surrey Quays | Shoreditch | Wembley | Wapping | White City | Woolwich

International | China | Hong Kong | India | Israel | Malaysia | Middle East | Pakistan  
Singapore | South Africa | Turkey

